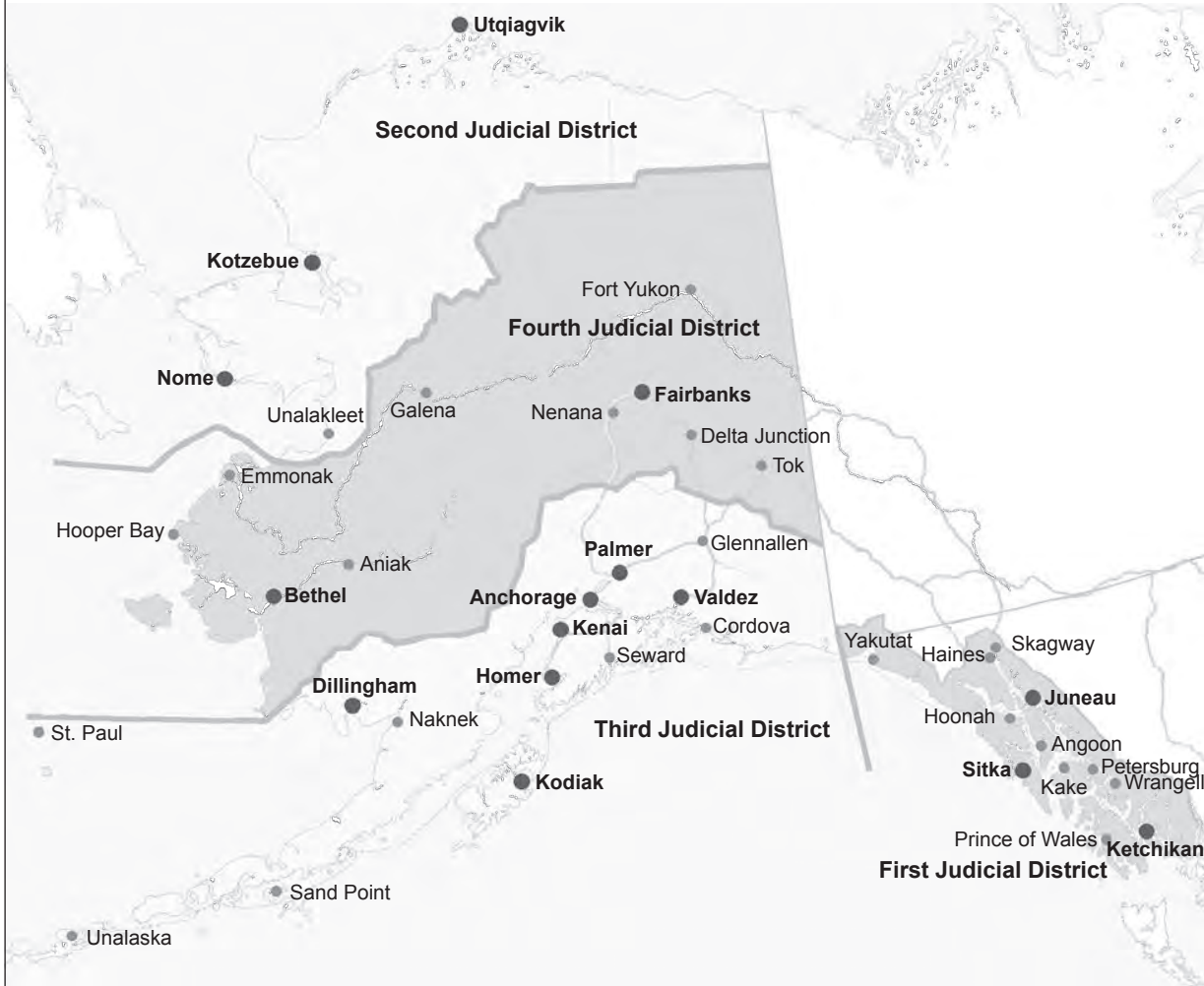




*Alaska Court System
Statistical Report FY 2021*

July 1, 2020 – June 30, 2021

Alaska Court Locations, FY 2021



First Judicial District

Alaska Court System Statistical Report FY 2021

July 1, 2020 – June 30, 2021



© Copyright 2021 by the Alaska Court System.

Layout and compositing by Melissa S. Green, Field of Words, Anchorage, AK.

A bookmarked PDF version of this statistical report is available on the Alaska Court System website at <https://courts.alaska.gov/admin/index.htm#annualrep>.



Dall sheep ewe and lambs, Denali National Park and Preserve (Fourth Judicial District)

Table of Statistical Tables and Figures

<i>Budgetary Overview</i>	1
Figure A. Alaska Court System Budget within State of Alaska FY21 Operating Budget	2
Figure B. Alaska Court System Budget in Total Justice-Related Operating Budget, FY21	3
<i>Appellate Courts</i>	5
Supreme Court Activity	7
Filings.....	7
Dispositions.....	7
Pending Caseload	7
Time Required for Disposition of Cases.....	7
Court of Appeals Activity	7
Filings.....	7
Dispositions.....	8
Pending Caseload	8
Note for Researchers	8
Alaska Supreme Court.....	9
Table 1.01. Alaska Supreme Court — Case Filings & Dispositions, FY 2017–2021	9
Table 1.02. Alaska Supreme Court — Motions and Petitions for Rehearing, FY 2017–2021	9
Table 1.03. Alaska Supreme Court — Caseload Summary, FY 2021	9
Table 1.04. Alaska Supreme Court — Dispositions by Manner of Disposition, FY 2021	10
Table 1.05. Alaska Supreme Court — Status of Cases Pending End of Year, FY 2021	10
Table 1.06. Alaska Supreme Court — Time to Disposition, FY 2021.....	11
Alaska Court of Appeals.....	13
Table 2.01. Alaska Court of Appeals — Case Filings & Dispositions, FY 2017–2021	13
Table 2.02. Alaska Court of Appeals — Motions and Petitions for Rehearing, FY 2017–2021	13
Table 2.03. Alaska Court of Appeals — Caseload Summary, FY 2021	13
Table 2.04. Alaska Court of Appeals — Dispositions by Manner of Disposition, FY 2021	14
Table 2.05. Alaska Court of Appeals — Status of Cases Pending End of Year, FY 2021	14
Table 2.06. Alaska Court of Appeals — Time to Disposition, FY 2021	15
<i>Statewide Trial Courts</i>	17
Trial Court Activity	19
Filings.....	19
Dispositions.....	19
Explanatory Notes.....	19
Felony Filings.....	19
Criminal Case Categorization	19
Reopened Cases	19
Civil Protective Order Cases	20
Note for Researchers	20
Statewide Trial Courts	21
Table 3.01. Total Statewide Trial Court Case Filings FY21	21
Table 3.02. Population Trends by Court Site FY21	21

Superior Court Activity.....	23
Table 4.01. Total Superior Court Case Filings FY19–FY21	25
Table 4.02. Total Superior Court Case Dispositions FY19–FY21	26
Figure 4.01. Superior Court Filing and Disposition Trends FY19–FY21	27
Table 4.03. Superior Court Clearance Rates FY20–FY21	28
Table 4.04. Superior Court Filings by Case Type FY21.....	29
Figure 4.02. Composition of Superior Court Filings FY21	30
Figure 4.03. Superior Court Filing Trends by Case Type FY19–FY21	31
Table 4.05. Superior Court Dispositions by Case Type FY21.....	32
Table 4.06. Felony Case Filings FY19–FY21	33
Table 4.07. Felony Filings by Case Type FY21	34
Table 4.08. Criminal Case Types FY21	35
Table 4.09. Felony Case Dispositions FY19–FY21	36
Table 4.10. Felony Case Dispositions by Manner of Disposition FY21	37
Table 4.11. Post-judgment Filings: Felony Petitions to Revoke Probation FY19–FY21	38
Table 4.12. Probate Case Filings FY19–FY21	39
Table 4.13. Probate Filings by Case Type FY21	40
Table 4.14. Probate Case Dispositions FY19–FY21	41
Table 4.15. Domestic Relations Case Filings FY19–FY21	42
Table 4.16. Domestic Relations Filings by Case Type FY21	43
Table 4.17. Domestic Relations Case Dispositions FY19–FY21	44
Table 4.18. Domestic Relations Case Dispositions by Manner of Disposition FY21	45
Table 4.19. Post-judgment Filings: Motions to Modify Custody, Support or Visitation FY19–FY21	46
Table 4.20. Superior Court General Civil Case Filings FY19–FY21	47
Table 4.21. Superior Court General Civil Filings by Case Type FY21	48
Table 4.22. Superior Court General Civil Case Types FY21	49
Table 4.23. Superior Court General Civil Case Dispositions FY19–FY21	50
Table 4.24. Superior Court General Civil Case Dispositions by Manner of Disposition FY21	51
Table 4.25. CINA Case Filings FY19–FY21.....	52
Table 4.26. Delinquency Case Filings FY19–FY21	53
Table 4.27. CINA and Delinquency Filings by Case Type FY21	54
District Court Activity.....	55
Table 5.01. Total District Court Case Filings FY19–FY21	57
Table 5.02. Total District Court Case Dispositions FY19–FY21	57
Figure 5.01. District Court Filing and Disposition Trends FY19–FY21	59
Table 5.03. District Court Clearance Rates FY20–FY21	60
Table 5.04. District Court Filings by Case Type FY21	61
Figure 5.02. Composition of District Court Case Filings FY21	62
Figure 5.03. District Court Filing Trends by Case Type FY19–FY21	63
Table 5.05. District Court Dispositions by Case Type FY21	64
Table 5.06. District Court Non-Minor Offense Case Filings FY19–FY21	65
Table 5.07. District Court Non-Minor Offense Case Dispositions FY19–FY21	66
Table 5.08. Misdemeanor Case Filings FY19–FY21	67
Table 5.09. Misdemeanor Filings by Case Type FY21	68
Table 5.10. Criminal Case Types FY21	69

Table 5.11. Misdemeanor Case Dispositions FY19–FY2170

Table 5.12. Misdemeanor Case Dispositions by Manner of Disposition FY2171

Table 5.13. Felony Filings in District Court FY19–FY2172

Table 5.14. Post-judgment Filings: Misdemeanor Petitions to Revoke Probation FY19–FY2173

Table 5.15. Small Claims Case Filings FY19–FY2174

Table 5.16. Small Claims Case Dispositions FY19–FY2175

Table 5.17. Small Claims Case Dispositions by Manner of Disposition FY2176

Table 5.18. Civil Protective Order Case Filings FY19–FY2177

Table 5.19. Civil Protective Order Case Dispositions FY19–FY2178

Table 5.20. District Court General Civil Case Filings FY19–FY2179

Table 5.21. District Court General Civil Filings by Case Type FY2180

Table 5.22. District Court General Civil Case Dispositions FY19–FY2181

Table 5.23. District Court General Civil Case Dispositions by Manner of Disposition FY2182

Table 5.24. Minor Offense Case Dispositions FY19–FY2183

Table 5.25. Minor Offense Case Dispositions by Case Type FY2184

Table 5.26. Minor Offense Case Types FY2185

Photo Permissions.....inside back cover



Kanuti River, Kanuti National Wildlife Refuge (Fourth Judicial District)

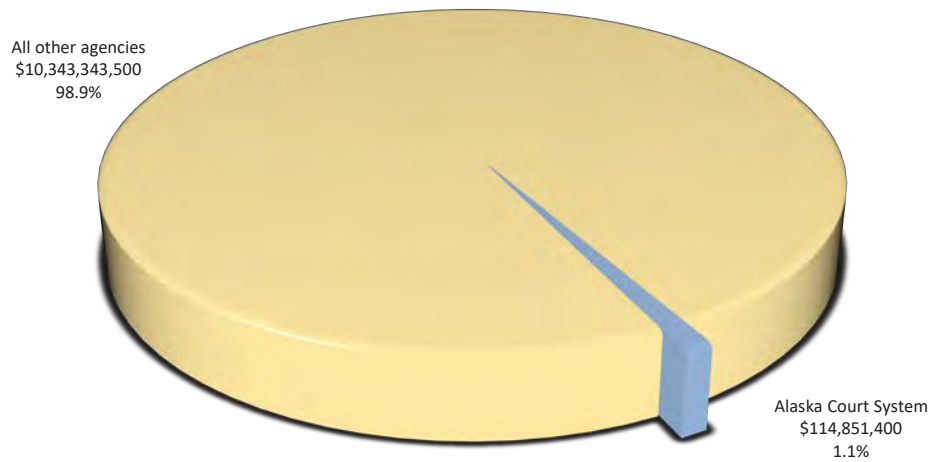


Beaufort Sea coastline (Second Judicial District)



*Budgetary
Overview*

Diapensia, Andraefsky Wilderness, Yukon Delta National Wildlife Refuge (Fourth Judicial District)

Figure A. Alaska Court System Budget within State of Alaska FY21 Operating Budget**FY21 State of Alaska Operating Budget by Agency**

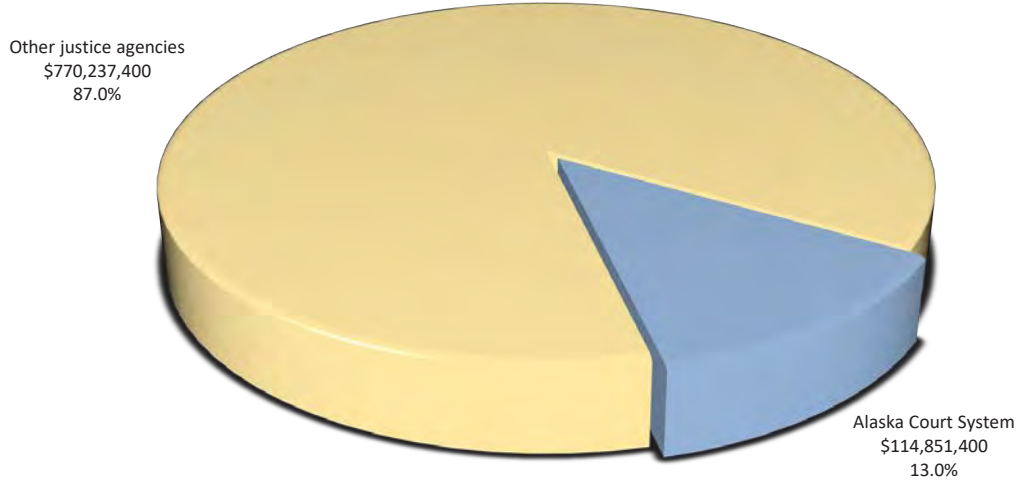
Agency	Amount	Percentage of budget
Alaska Court System*	\$114,851,400	1.1 %
Alaska Legislature	\$69,200,000	0.7
Department of Administration	\$360,856,100	3.5
Department of Commerce, Community and Economic Development	\$163,238,200	1.6
Department of Corrections	\$392,364,500	3.8
Department of Education and Early Development	\$1,655,893,000	15.8
Department of Environmental Conservation	\$80,336,100	0.8
Department of Fish and Game	\$202,780,700	1.9
Department of Health and Social Services	\$3,448,346,200	33.0
Department of Labor and Workforce Development	\$151,412,200	1.4
Department of Law	\$89,310,500	0.9
Department of Military and Veteran Affairs	\$65,813,000	0.6
Department of Natural Resources	\$174,846,100	1.7
Department of Public Safety	\$229,807,800	2.2
Department of Revenue	\$373,955,900	3.6
Department of Transportation and Public Facilities	\$606,220,400	5.8
Office of the Governor	\$28,363,400	0.3
University of Alaska	\$832,273,900	8.0
Executive Branch-wide appropriations	\$1,418,325,500	13.6
Total	\$10,458,194,900	100.0 %

* Alaska Court System budget figure includes Alaska Judicial Council and Alaska Commission on Judicial Conduct.

Source of data: Alaska Legislative Finance Division — Operating Budget: Agency Summary, 2020 Legislature (6 Jun 2020)

<http://legfin.akleg.gov/BudgetReports/LY2020/Operating/Enacted/AgencySummary.pdf>

Figure B. Alaska Court System Budget in Total Justice-Related Operating Budget, FY21



FY21 Alaska Justice Agencies Operating Budgets

Agency	Amount	Percentage of budget
Alaska Court System*	\$114,851,400	13.0 %
Department of Corrections	\$392,364,500	44.3
Department of Law	\$89,310,500	10.1
Department of Public Safety	\$229,807,800	26.0
Public Defender Agency	\$28,930,400	3.3
Office of Public Advocacy	\$29,824,200	3.4
Total	\$885,088,800	100.0 %

* Alaska Court System budget figure includes Alaska Judicial Council and Alaska Commission on Judicial Conduct.

Source of data: Alaska Legislative Finance Division — Operating Budget: Agency Summary, 2020 Legislature (6 Jun 2020)
<http://legfin.akleg.gov/BudgetReports/LY2020/Operating/Enacted/AgencySummary.pdf>
<http://legfin.akleg.gov/BudgetReports/LY2020/Operating/Enacted/DOA-AllocationTotal.pdf>



Tufted puffins, Glacier Bay (First Judicial District)



Blue heron, Douglas Island (First Judicial District)

*Appellate
Courts*



Fog on the Lowe River, Valdez (Third Judicial District)

Appellate Courts

Supreme Court Activity

Filings

During FY 2021, 301 cases were filed in the Supreme Court, a two percent decrease from the total filed in FY 2020. The number of appeals filed was down thirteen percent from the previous year; petitions for hearing decreased thirteen percent; and petitions for review increased by one hundred and fifteen percent. The category that includes bar matters, federal certification matters, and original applications decreased twenty-one percent from the previous year. For details about filings in various categories of cases from FY 2017 through FY 2021, see page 9.

Dispositions

The Supreme Court disposed of 314 cases in FY 2021, a one percent decrease from FY 2020. The court issued 77 full opinions, 60 MO&Js, and three published orders. For details about dispositions by case type in FY 2021, see page 10. For comparisons of dispositions by case type from FY 2017 through FY 2021, see page 9.

Pending Caseload

On June 30, 2021, 272 cases were pending, a five percent decrease from the end of FY 2020. Sixty-four percent of these pending cases were at a stage prior to submission to the court (filing pending, awaiting settlement conference, awaiting record or transcripts, awaiting briefs, awaiting argument or conference, or awaiting response to a petition). Six percent were stayed or were awaiting rehearing or record return prior to closing, and the remaining thirty percent were under advisement (submitted to the court but awaiting circulation of a draft opinion, publication of an opinion, or decision on a petition). For a comparison of cases pending at year's end according to case type from FY 2017 through FY 2021, see page 9. For the status of cases pending at the end of FY 2021 according to case type, see page 10.

Time Required for Disposition of Cases

In fifty percent of appeals decided by opinion or MO&J, the time from submission (usually the date of oral argument or conference on the briefs) to publication of a decision was 5.3 months or less. Fifty percent of petitions, bar matters, and original applications were completed (from opening to closing) in 1.9 months or less. Additional information about time to disposition can be found at page 11.

Court of Appeals Activity

Filings

During FY 2021, 168 cases were filed in the Court of Appeals, a twenty-six percent decrease from the total filed in FY 2020. Merit appeal filings decreased by thirty-eight percent from the previous year, while sentence appeal filings were down twenty percent. Petition for review and petition for hearing filings increased by forty percent, and original application and bail appeal filings increased by nine percent from FY 2020. For a comparison of filings in various case categories from FY 2017 through FY 2021, see page 13.

Dispositions

The Court of Appeals disposed of 253 cases in FY 2021. This was a sixteen percent decrease from FY 2020. The court issued 37 full opinions and 139 memorandum opinions and summary dispositions. For details about the types and caseload composition of dispositions in FY 2021, see page 13. For comparisons of dispositions by case type from FY 2017 through FY 2021, see page 13.

Pending Caseload

On June 30, 2021, 491 cases were pending before the Court of Appeals. Seventy-six percent of these cases were at a stage prior to submission to the court (filing pending, awaiting record, awaiting briefing, awaiting oral argument, or awaiting response to a petition). Three percent were awaiting rehearing or record return prior to closing, two percent were stayed or remanded, and the remaining nineteen percent were under advisement (submitted to the court but awaiting circulation of a draft opinion, publication of an opinion, or a decision on a petition). For a comparison of cases pending at year's end according to case type from FY 2017 through FY 2021, see page 13. For the status of cases pending at the end of FY 2021 according to case type, see page 14.

Time Required for Disposition of Cases

In fifty percent of appeals decided by opinion or MO&J, the time from submission (usually the date of oral argument or conference on the briefs) to publication of a decision was 1.6 months or less. Fifty percent of petitions and original applications were completed (from opening to closing) in 1.6 months or less. Additional information about time to disposition can be found at page 15.

Note for Researchers

Readers and researchers should be aware that occasional changes in the manner in which cases are reported or recorded by the Alaska Court System may account for some changes over time in case filing totals for specific courts or jurisdictions. While the court system attempts to make the data tables in the annual report as consistent as possible from year to year, care is necessary, especially when discerning trends or making comparisons between time periods.

Alaska Supreme Court

**Table 1.01. Alaska Supreme Court — Case Filings & Dispositions,
FY 2017–2021**

	FY17	FY18	FY19	FY20	FY21
Filings					
Civil appeals	224	193	166	197	171
Petitions for hearing	94	109	114	70	61
Petitions for review	57	61	54	27	58
Bar/original applications	15	19	19	14	11
Total	390	382	353	308	301
Dispositions					
Civil appeals	186	180	238	188	186
Petitions for hearing	81	114	109	88	67
Petitions for review	63	61	62	24	50
Bar/original applications	14	16	22	18	11
Total	344	371	431	318	314
Published					
Full opinions	71	72	126	83	77
Memorandum opinions	49	43	45	48	60
Published orders	4	6	3	5	3
Total	124	121	174	136	140
Pending end-of-year					
Civil appeals	285	304	231	241	227
Petitions for hearing	37	34	36	23	14
Petitions for review	21	21	11	15	24
Bar/original applications	9	9	9	6	7
Total	352	368	287	285	272

**Table 1.02. Alaska Supreme Court — Motions and Petitions for Rehearing,
FY 2017–2021**

	FY17	FY18	FY19	FY20	FY21
Filings					
Petitions for rehearing	18	24	34	27	30
Full court motions	43	67	68	58	62
Individual justice motions	991	986	930	880	799
Routine (clerk) motions	466	390	473	490	503
Total	1,518	1,467	1,505	1,455	1,394
Dispositions					
Petitions for rehearing	15	23	34	27	29
Full court motions	44	61	74	59	65
Individual justice motions	979	950	884	928	804
Routine (clerk) motions	420	348	466	487	509
Total	1,458	1,382	1,458	1,501	1,407
Pending end-of-year					
Petitions for rehearing	4	1	2	2	1
Full court motions	4	12	4	3	2
Individual justice motions	58	58	82	43	29
Routine (clerk) motions	50	47	21	13	9
Total	116	118	109	61	41

Table 1.03. Alaska Supreme Court — Caseload Summary, FY 2021

	Civil appeals	Petitions for hearing	Petitions for review	Bar/original applications	Total
Pending beginning of year	241	20	15	7	283
Filings	171	61	58	11	301
Dispositions	186	67	50	11	314
Pending end of year	227	14	24	7	272

Table 1.04. Alaska Supreme Court — Dispositions by Manner of Disposition, FY 2021

	Civil appeals	Petitions for hearing	Petitions for review	Bar/ original application/ federal certified questions	Total all cases
Dispositions by published opinions					
Affirmed	45	2	0	0	47
Reversed or vacated	19	3	2	0	24
Affirmed in part/reversed in part	4	0	0	0	4
Other (dismissed, etc.)	0	0	0	2	2
Total	68	5	2	2	77
Summary dispositions on merits (memorandum opinions & summary orders)					
Affirmed	48	0	0	1	49
Reversed or vacated	7	0	0	0	7
Affirmed in part/Reversed in part	3	0	1	0	4
Other (dismissed, etc.)	2	0	0	1	3
Total	60	0	1	2	63
Petitions/applications granted		1	4	3	8
Total dispositions on merits	128	5	3	4	140
Petition denials/orders not on merits	24	57	43	5	129
Dismissals					
Stipulated to or by Appellant	20	0	2	0	22
On Motion of Appellee	2	1	0	0	3
<i>Sua Sponte</i> *	12	4	2	2	20
Total dispositions not on merits	58	62	47	7	174
Total dispositions	186	67	50	11	314

* *Sua Sponte* means orders issued by the court without motion by a party.

Table 1.05. Alaska Supreme Court — Status of Cases Pending End of Year, FY 2021

	Civil appeals	Petitions for hearing	Petitions for review	Bar/ original application/ federal certified questions	Total all cases
Filing pending	3	0	4	2	9
Awaiting settlement conference	1	0	0	0	1
Awaiting records/transcript	37	0	0	0	37
Awaiting briefs	75	1	6	0	82
Awaiting argument/conference	34	0	2	1	37
Awaiting draft opinion	37	1	5	0	43
Draft opinion circulating	28	1	3	2	34
Awaiting petition response	0	7	1	0	8
Awaiting petition decision	0	2	2	0	4
Awaiting rehearing/record return	7	0	0	2	9
Stayed or remanded	5	2	1	0	8
Total	227	14	24	7	272

Table 1.06. Alaska Supreme Court — Time to Disposition, FY 2021

Appeals decided by opinion or memorandum opinion & judgment (MO&J)*				Petitions, bar matters, original applications***			
	Percentile	Days	Months		Percentile	Days	Months
Pre-submission to Court				File open — file closed			
Notice of appeal to record certification	50%	35	1.2	50%	56	1.9	
	75%	42	1.4	75%	89	3.0	
	90%	82	2.7	90%	143	4.8	
Record certification to last brief	50%	200	6.7	*** This includes all petitions, bar matters, and original applications closed during the FY, whether by regular order or dismissal, except those that were granted and thereafter went through the full briefing process, ending in an opinion.			
	75%	272	9.1				
	90%	379	12.6				
Last brief to submission**	50%	78	2.6				
	75%	105	3.5				
	90%	192	6.4				
Subtotal: Number of days/month before submission to the court	50%	337	11.2				
	75%	451	15.0				
	90%	570	19.0				
Submission to publication							
Submission to circulation of draft opinion or recommendation	50%	111	3.7				
	75%	154	5.1				
	90%	185	6.2				
Circulation of draft opinion or recommendation to publication	50%	43	1.4				
	75%	66	2.2				
	90%	116	3.9				
Subtotal: Number of days/months from submission to publication	50%	158	5.3				
	75%	218	7.3				
	90%	271	9.0				
Post-publication motions							
Publication to closing	50%	17	0.6				
	75%	22	0.7				
	90%	40	1.3				
Total time from open to close							
	50%	534	17.8				
	75%	669	22.3				
	90%	823	27.4				

* This includes appeals closed during the FY that resulted in a published opinion or memorandum opinion & judgment; appeals that ended by dismissal or other closure are not included.

** "Submission" is usually the date of oral argument or conference on the case, but can be later in circumstances such as reassignment to a different chambers, or reconference by the court.

Alaska Court of Appeals

Table 2.01. Alaska Court of Appeals — Case Filings & Dispositions, FY 2017–2021

	FY17	FY18	FY19	FY20	FY21
Filings					
Merit appeals	183	233	182	177	109
Sentence appeals	32	26	23	15	12
Petitions	34	33	36	25	35
Original applications/bail appeals	4	7	15	11	12
Total	253	299	256	228	168
Dispositions					
Merit appeals	216	235	256	236	189
Sentence appeals	39	31	39	28	27
Petitions	25	36	38	25	26
Original applications/bail appeals	4	8	11	13	11
Total	284	310	344	302	253
Published					
Full opinions	52	47	42	19	37
Memorandum opinions*	131	161	208	165	139
Published orders	0	0	0	2	0
Total	183	208	250	186	176
Pending end-of-year					
Merit appeals	645	640	572	513	441
Sentence appeals	70	69	56	43	26
Petitions	19	12	7	12	20
Original applications/bail appeals	2	2	2	4	4
Total	736	723	637	572	491

*This number includes summary dispositions, which the court started issuing in March 2019.

Table 2.02. Alaska Court of Appeals — Motions and Petitions for Rehearing, FY 2017–2021

	FY17	FY18	FY19	FY20	FY21
Filings					
Petitions for rehearing	27	20	9	7	16
Full court motions	118	114	121	149	160
Individual judge motions	255	184	490	497	447
Routine (clerk) motions	1,351	1,295	867	664	640
Total	1,751	1,613	1,487	1,317	1,263
Dispositions					
Petitions for rehearing	15	27	9	11	14
Full court motions	72	116	124	144	162
Individual judge motions	525	260	493	515	484
Routine (clerk) motions	1,329	1,322	869	695	651
Total	1,941	1,725	1,495	1,365	1,311
Pending end-of-year					
Petitions for rehearing	3	5	3	0	1
Full court motions	7	10	6	11	9
Individual judge motions	68	10	31	45	18
Routine (clerk) motions	26	56	43	26	14
Total	104	81	83	82	42

Table 2.03. Alaska Court of Appeals — Caseload Summary, FY 2021

	Merit appeals	Sentence appeals	Petitions	Bail appeals/ original applications	Total
Pending beginning of year	522	41	11	3	577
Filings	109	12	35	12	168
Dispositions	189	27	26	11	253
Pending end of year	441	26	20	4	491

Table 2.04. Alaska Court of Appeals — Dispositions by Manner of Disposition, FY 2021

	Merit appeals	Sentence appeals	Petitions	Bail appeals/ original applications	Total
Dispositions by published opinions					
Affirmed	16	0	1	0	17
Reversed or vacated	14	1	0	0	15
Affirmed in part/reversed in part	4	0	0	0	4
Other (dismissed, etc.)	0	0	1	0	1
Total	34	1	2	0	37
Summary dispositions on merits (memorandum opinions, summary dispositions, and final unpublished orders on the merits)					
Affirmed	88	13	2	2	105
Reversed or vacated	25	6	4	6	41
Affirmed in part/Reversed in part	4	2	0	0	6
Other (dismissed, etc.)	6	0	4	2	12
Total	123	21	10	10	164
Petitions/applications granted			4	0	4
Total dispositions on merits	157	22	12	10	201
Petition denials/orders not on merits	3	1	9	1	14
Dismissals					
Stipulated to or by appellant	23	4	3	0	30
On motion of appellee	0	0	2	0	2
<i>Sua Sponte</i> *	6	0	0	0	6
Total dispositions not on merits	32	5	14	1	52
Total dispositions	189	27	26	11	253

* *Sua Sponte* means orders issued by the court without motion by a party.**Table 2.05. Alaska Court of Appeals — Status of Cases Pending End of Year, FY 2021**

	Merit appeals	Sentence appeals	Petitions	Bail appeals/ original applications	Total
Filing pending	1	0	2	0	3
Awaiting records/transcript	74	7	0	0	81
Briefing stage	185	9	6	1	201
Awaiting argument/conference	70	5	4	1	80
Awaiting draft opinion	30	1	1	0	32
Draft opinion circulating	57	1	1	0	59
Awaiting petition response	0	0	4	2	6
Awaiting petition decision	0	0	1	0	1
Awaiting rehearing/record return	14	3	0	0	17
Stayed or remanded	10	0	1	0	11
Total	441	26	20	4	491

Table 2.06. Alaska Court of Appeals — Time to Disposition, FY 2021

Appeals decided by opinion or memorandum opinion & judgment (MO&J)*				Petitions and original applications***			
	Percentile	Days	Months		Percentile	Days	Months
Pre-submission to Court				File open — file closed			
Notice of appeal to record certification	50%	36	1.2	50%	47	1.6	
	75%	53	1.8	75%	112	3.7	
	90%	98	3.3	90%	153	5.1	
Record certification to last brief	50%	686	22.9	*** This includes all petitions and original applications closed during the FY, whether by regular order or dismissal, except those that were granted and thereafter went through the full briefing process, ending in an opinion.			
	75%	765	25.5				
	90%	888	29.6				
Last brief to submission**	50%	280	9.3				
	75%	398	13.3				
	90%	495	16.5				
Subtotal: Number of days/month before submission to the court	50%	1,023	34.1				
	75%	1,211	40.4				
	90%	1,376	45.9				
Submission to publication							
Submission to circulation of draft opinion or recommendation	50%	7	0.2				
	75%	47	1.6				
	90%	151	5.0				
Circulation of draft opinion or recommendation to publication	50%	28	0.9				
	75%	64	2.1				
	90%	147	4.9				
Subtotal: Number of days/months from submission to publication	50%	48	1.6				
	75%	132	4.4				
	90%	257	8.6				
Post-publication motions							
Publication to closing	50%	36	1.2				
	75%	43	1.4				
	90%	83	2.8				
Total time from open to close							
	50%	1,154	38.5				
	75%	1,356	45.2				
	90%	1,618	53.9				

* This includes appeals closed during the FY that resulted in a published opinion or memorandum opinion & judgment; appeals that ended by dismissal or other closure are not included.

** "Submission" is usually the date of oral argument or conference on the case, but can be later in circumstances such as reassignment to a different chambers, or reconference by the court.



Chukchi Sea coastline (Second Judicial District)



Alaska Range, Denali National Park and Preserve (Fourth Judicial District)



Sunset, Douglas Island (First Judicial District)

Statewide Trial Courts

Trial Court Activity

Filings

During FY21, 101,768 cases were filed in the trial courts, a decrease of 15.8 percent from 120,929 filings in FY20.

The FY21 Superior Court filings were 22,150, a decrease of 3.2 percent from 22,888 filings in FY20. Delinquency filings decreased by 28.9 percent, felony filings decreased by 8.7 percent, general civil filings decreased by 7.2 percent, CINA filings decreased 6.8 percent, and domestic relations filings decreased by 4.5 percent. Probate filings increased by 11.4 percent.

The FY21 District Court filings were 79,618, a decrease of 18.8 percent from 98,041 filings in FY20. Small claims filings decreased 35.5 percent, minor offense filings decreased 22.1 percent, civil protective order filings decreased 14.5 percent, misdemeanor filings decreased 11.0 percent, and general civil filings decreased 10.1 percent.

Dispositions

The trial courts disposed of 101,420 cases in FY21, a decrease of 13.8 percent from the 117,647 dispositions reported in FY20. To avoid a backlog of cases awaiting disposition, courts aspire to have a clearance rate of 100 percent or higher, meaning that they have cleared (i.e., disposed of) at least as many cases as were filed during the period. The clearance rate for trial court cases was 99.7 percent in FY21.

Explanatory Notes

Felony Filings

Most felony cases are initiated in District Court and then transferred to Superior Court after indictment by a grand jury or the filing of an information. Since most of the activity in a felony case typically occurs in the Superior Court, felony cases are reported as Superior Court filings regardless of whether they were initiated in District Court or in the Superior Court. A table showing the number of felony cases initiated in the District Court is provided for informational purposes (Table 5.13, page 70). To avoid double counting, these filings are not included in the District Court filing totals, but should be considered when evaluating the **workload** of a District Court.

Criminal Case Categorization

Criminal cases are categorized based on the most serious charge at filing. For example, if a defendant is charged with a felony and two misdemeanors, the case is counted as a felony. If the felony charge is subsequently reduced to a misdemeanor, the case type does not change; the case is still categorized as a felony for reporting purposes.

Reopened Cases

The criminal filing statistics in this report include only new case filings and do not include petitions to revoke probation or other proceedings that cause the court to reopen a criminal case. Likewise, the

domestic relations filing statistics include only new case filings and do not include post-judgment motions to modify custody, support or visitation. Because this post-judgment activity significantly impacts the trial court workload, tables showing this activity are provided for informational purposes. The number of petitions to revoke probation in felony and misdemeanor cases can be found in Tables 4.11 and 5.14 ((pages 36 and 71). The number of filings of motions to modify custody, support, or visitation can be found in Table 4.19 (page 44).

Civil Protective Order Cases

The civil protective order case group includes petitions for domestic violence, stalking, and sexual assault protective orders. These cases may be filed in either District or Superior Court, but District Courts handle the vast majority. Because readers and researchers often want to know the total number of civil protective order cases that were filed, domestic violence, stalking, and sexual assault protective order cases filed in the Superior Court are counted with the District Court cases.

Note for Researchers

Readers and researchers should be aware that occasional changes in the manner in which cases are reported or recorded by the Alaska Court System may account for some changes over time in case filing totals for specific courts or jurisdictions. While the court system attempts to make the data tables in the annual report as consistent as possible from year to year, care is necessary, especially when discerning trends or making comparisons between time periods.

Statewide Trial Courts

**Table 3.01. Total Statewide Trial Court Case Filings
FY 21**

Court	Superior Court		District Court				Total	
	Filings	% of Superior Court total	Non-minor offense filings	Minor offense filings	Total filings	% of District Court total	Filings	% of statewide total
Anchorage	9,816	44.3%	13,803	14,913	28,716	36.1%	38,532	37.9%
Angoon	0	0.0%	9	0	9	0.0%	9	0.0%
Aniak	35	0.2%	58	9	67	0.1%	102	0.1%
Bethel	790	3.6%	1,249	97	1,346	1.7%	2,136	2.1%
Cordova	29	0.1%	56	78	134	0.2%	163	0.2%
Delta Junction	40	0.2%	96	213	309	0.4%	349	0.3%
Dillingham	273	1.2%	432	148	580	0.7%	853	0.8%
Emmonak	79	0.4%	126	5	131	0.2%	210	0.2%
Fairbanks	2,630	11.9%	4,757	5,069	9,826	12.3%	12,456	12.2%
Fort Yukon	27	0.1%	63	11	74	0.1%	101	0.1%
Galena	14	0.1%	55	8	63	0.1%	77	0.1%
Glennallen	56	0.3%	152	283	435	0.5%	491	0.5%
Haines	10	0.0%	57	60	117	0.1%	127	0.1%
Homer	338	1.5%	638	695	1,333	1.7%	1,671	1.6%
Hoonah	2	0.0%	34	25	59	0.1%	61	0.1%
Hooper Bay	53	0.2%	139	2	141	0.2%	194	0.2%
Juneau	983	4.4%	2,117	1,842	3,959	5.0%	4,942	4.9%
Kake ¹			Served by Petersburg					
Kenai	1,255	5.7%	2,179	4,608	6,787	8.5%	8,042	7.9%
Ketchikan	483	2.2%	1,227	432	1,659	2.1%	2,142	2.1%
Kodiak	295	1.3%	385	466	851	1.1%	1,146	1.1%
Kotzebue	375	1.7%	473	55	528	0.7%	903	0.9%
Naknek	62	0.3%	226	81	307	0.4%	369	0.4%
Nenana	38	0.2%	104	2,313	2,417	3.0%	2,455	2.4%
Nome	385	1.7%	929	376	1,305	1.6%	1,690	1.7%
Palmer	2,909	13.1%	4,628	8,494	13,122	16.5%	16,031	15.7%
Petersburg	64	0.3%	200	123	323	0.4%	387	0.4%
Prince of Wales	138	0.6%	355	360	715	0.9%	853	0.8%
Sand Point	11	0.1%	37	6	43	0.0%	54	0.1%
Seward	132	0.6%	244	1,091	1,335	1.7%	1,467	1.4%
Sitka	246	1.1%	439	303	742	0.9%	988	1.0%
Skagway	2	0.0%	19	3	22	0.0%	24	0.0%
St. Mary's ²	74	0.3%	191	1	192	0.2%	266	0.3%
St. Paul	6	0.0%	14	1	15	0.0%	21	0.0%
Tok	50	0.2%	150	392	542	0.7%	592	0.6%
Unalakleet	60	0.3%	120	34	154	0.2%	214	0.2%
Unalaska	33	0.2%	114	117	231	0.3%	264	0.3%
Utqiagvik	242	1.1%	546	61	607	0.8%	849	0.8%
Valdez	72	0.3%	141	95	236	0.3%	308	0.3%
Wrangell	42	0.2%	97	52	149	0.2%	191	0.2%
Yakutat	1	0.0%	19	18	37	0.0%	38	0.0%
Total	22,150	100.0%	36,678	42,940	79,618	100.0%	101,768	100.0%
1st District	1,971	8.9%	4,573	3,218	7,791	9.8%	9,762	9.6%
2nd District	1,062	4.8%	2,068	526	2,594	3.2%	3,656	3.6%
3rd District	15,287	69.0%	23,049	31,076	54,125	68.0%	69,412	68.2%
4th District	3,830	17.3%	6,988	8,120	15,108	19.0%	18,938	18.6%

1. Kake court closed in October 2018.

2. St. Mary's court closed in 2016. Records for filings from the venue are still maintained separately.

**Table 3.02. Population Trends by Court Site
FY 21**

Court	Population served by court site*			Change 2000–2020		Change 2010–2020		% of statewide total
	2000	2010	2020	Number	Percent	Number	Percent	
Anchorage	261,634	292,256	289,491	27,857	10.6%	-2,765	-0.9%	39.7%
Angeon	572	459	382	-190	-33.2%	-77	-16.8%	0.1%
Aniak	2,296	1,948	2,247	-49	-2.1%	299	15.3%	0.3%
Bethel	13,353	15,605	16,581	3,228	24.2%	976	6.3%	2.3%
Chevak ¹	2,257	1,421	Served by Hooper Bay	N/S	N/S	N/S	N/S	N/S
Cordova	2,454	2,239	2,366	-88	-3.6%	127	5.7%	0.3%
Delta Junction	3,942	5,017	5,040	1,098	27.9%	23	0.5%	0.7%
Dillingham	4,922	4,847	4,773	-149	-3.0%	-74	-1.5%	0.7%
Emmonak	2,185	2,203	2,460	275	12.6%	257	11.7%	0.3%
Fairbanks	83,074	97,781	97,332	14,258	17.2%	-449	-0.5%	13.4%
Fort Yukon	1,289	1,165	1,040	-249	-19.3%	-125	-10.7%	0.0%
Galena	2,016	1,461	1,362	-654	-32.4%	-99	-6.8%	0.2%
Glennallen	3,231	3,037	2,696	-535	-16.6%	-341	-11.2%	0.4%
Haines	2,531	2,591	2,595	64	2.5%	4	0.2%	0.4%
Homer	12,736	13,899	15,133	2,397	18.8%	1,234	8.9%	2.1%
Hoonah ²	1,011	914	1,539	528	52.2%	625	68.4%	0.2%
Hooper Bay	1,071	1,112	2,808	1,737	162.2%	1,696	152.5%	0.4%
Juneau	31,365	31,860	31,773	408	1.3%	-87	-0.3%	4.4%
Kake ¹	710	557	Served by Petersburg	-710	-100.0%	-557	-100.0%	0.0%
Kenai	31,365	35,902	38,177	6,812	21.7%	2,275	6.3%	5.2%
Ketchikan	15,635	14,969	15,065	-570	-3.6%	96	0.6%	2.1%
Kodiak	13,913	13,592	12,611	-1,302	-9.4%	-981	-7.2%	1.7%
Kotzebue	7,208	8,197	7,831	623	8.6%	-366	-4.5%	1.1%
McGrath ¹	602	505	Served by Aniak	N/S	N/S	N/S	N/S	N/S
Naknek	3,081	2,628	2,420	-661	-21.5%	-208	-7.9%	0.3%
Nenana	3,280	3,297	3,315	35	1.1%	18	0.5%	0.5%
Nome	6,694	7,264	7,487	793	11.8%	223	3.1%	1.0%
Palmer	59,322	88,995	107,305	47,983	80.9%	18,310	20.6%	14.7%
Petersburg ²	3,506	3,266	3,810	304	8.7%	544	16.7%	0.5%
Prince of Wales ³	4,483	4,008	4,013	-470	-10.5%	5	0.1%	0.6%
Sand Point	952	2,114	1,930	978	102.7%	-184	-8.7%	0.3%
Seward	5,539	5,465	5,467	-72	-1.3%	2	0.0%	0.8%
Sitka	9,111	9,041	8,669	-442	-4.9%	-372	-4.1%	1.2%
Skagway	862	968	1,147	285	33.1%	179	18.5%	0.2%
St. Mary's ⁴	2,586	2,723	2,820	234	9.0%	97	3.6%	0.4%
St. Paul	684	581	448	-236	-34.5%	-133	-22.9%	0.1%
Tanana ¹	308	246	Served by Nenana	N/S	N/S	N/S	N/S	N/S
Tok	2,232	2,012	1,900	-332	-14.9%	-112	-5.6%	0.3%
Unalakleet	2,502	2,228	2,282	-220	-8.8%	54	2.4%	0.3%
Unalaska	5,494	6,007	6,091	597	10.9%	84	1.4%	0.8%
Utqiagvik⁵	7,385	8,756	9,523	2,138	29.0%	767	8.8%	1.3%
Valdez	4,242	4,064	4,021	-221	-5.2%	-43	-1.1%	0.6%
Wrangell	2,488	2,369	2,379	-109	-4.4%	10	0.4%	0.3%
Yakutat	808	662	574	-234	-29.0%	-88	-13.3%	0.1%
Total	626,931	710,231	728,903	101,972	16.3%	18,672	2.6%	100.0%
1st District	73,082	71,664	71,946	-1,136	-1.6%	282	0.4%	9.9%
2nd District	23,789	26,445	27,123	3,334	14.0%	678	2.6%	3.7%
3rd District	409,569	475,626	492,929	83,360	20.4%	17,303	3.6%	67.6%
4th District	120,491	136,496	136,905	16,414	13.6%	409	0.3%	18.8%

* Population of the communities served by each court site are taken from U.S. Census.

Note: This table is comparable to Table 6.01 on page 153 of the FY17 annual report.

N/S: Numbers 10 or less are not compared statistically.

1. Chevak court closed in FY 2014; McGrath and Tanana courts closed in FY 2015; Kake court closed in October 2018.

2. Beginning with FY 2019, the Petersburg venue population includes the population previously covered by Kake. The Hoonah population now includes the population numbers for Gustavus, Tenakee Springs, and Excursion Inlet, which were previously included within the Juneau venue population.

3. Craig court was renamed Prince of Wales in FY 2016.

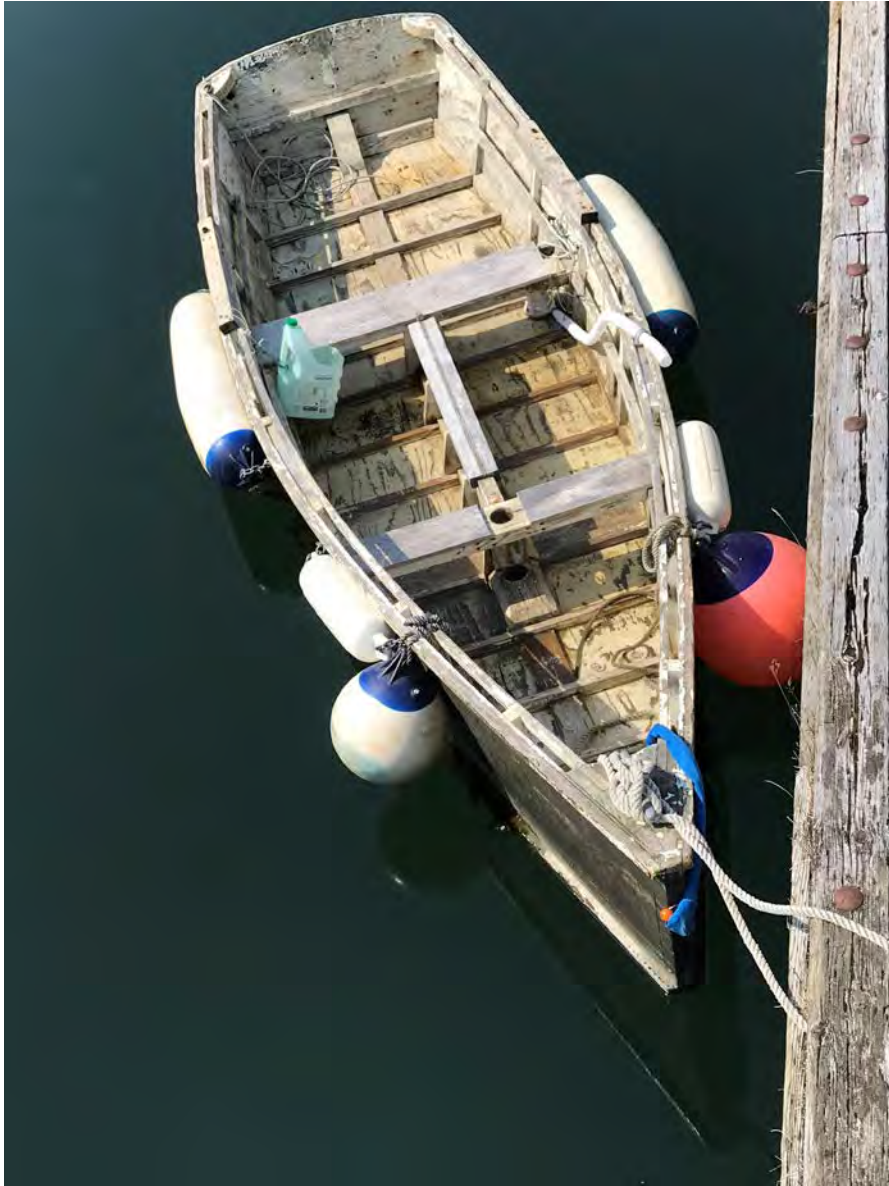
4. St. Mary's court closed in 2016. Records for filings from the venue are still maintained separately.

5. The community of Barrow changed its name to Utqiagvik in 2016.



*Superior Court
Activity*

King crab, Douglas Island (First Judicial District)



Wooden skiff, Petersburg (First Judicial District)

**Table 4.01. Total Superior Court Case Filings
FY 19 – FY 21**

Court	FY 19	FY 20	FY 21	Change	
				FY 19 to FY 21	FY 20 to FY 21
Anchorage	10,977	10,480	9,816	-11%	-6%
Angoon	2	1	0	N/S	N/S
Aniak	64	64	35	-45%	-45%
Bethel	768	825	790	3%	-4%
Cordova	28	25	29	4%	16%
Delta Junction	47	39	40	-15%	3%
Dillingham	239	272	273	14%	0%
Emmonak	105	104	79	-25%	-24%
Fairbanks	2,760	2,645	2,630	-5%	-1%
Fort Yukon	26	23	27	4%	17%
Galena	24	18	14	-42%	-22%
Glennallen	66	52	56	-15%	8%
Haines	6	5	10	N/S	N/S
Homer	300	314	338	13%	8%
Hoonah	2	7	2	N/S	N/S
Hooper Bay	48	53	53	10%	0%
Juneau	1,148	1,072	983	-14%	-8%
Kake ¹	0	Served by Petersburg		N/S	#REF!
Kenai	1,427	1,320	1,255	-12%	-5%
Ketchikan	580	507	483	-17%	-5%
Kodiak	312	361	295	-5%	-18%
Kotzebue	440	371	375	-15%	1%
Naknek	59	65	62	5%	-5%
Nenana	51	42	38	-25%	-10%
Nome	361	375	385	7%	3%
Palmer	2,340	2,523	2,909	24%	15%
Petersburg	63	63	64	2%	2%
Prince of Wales	94	140	138	47%	-1%
Sand Point	20	26	11	-45%	-58%
Seward	141	146	132	-6%	-10%
Sitka	250	245	246	-2%	0%
Skagway	1	1	2	N/S	N/S
St. Mary's ²	62	88	74	19%	-16%
St. Paul	9	7	6	N/S	N/S
Tok	47	39	50	6%	28%
Unalakleet	76	69	60	-21%	-13%
Unalaska	48	48	33	-31%	-31%
Utqiagvik	297	323	242	-19%	-25%
Valdez	59	84	72	22%	-14%
Wrangell	49	44	42	-14%	-5%
Yakutat	6	2	1	N/S	N/S
Total	23,402	22,888	22,150	-5%	-3%
1st District	2,201	2,087	1,971	-10%	-6%
2nd District	1,174	1,138	1,062	-10%	-7%
3rd District	16,025	15,723	15,287	-5%	-3%
4th District	4,002	3,940	3,830	-4%	-3%

N/S: Numbers 10 or less are not compared statistically.

1. Kake court closed in October 2018.

2. St. Mary's court closed in 2016. Records for filings from the venue are still maintained separately.

**Table 4.02. Total Superior Court Case Dispositions
FY 19 – FY 21**

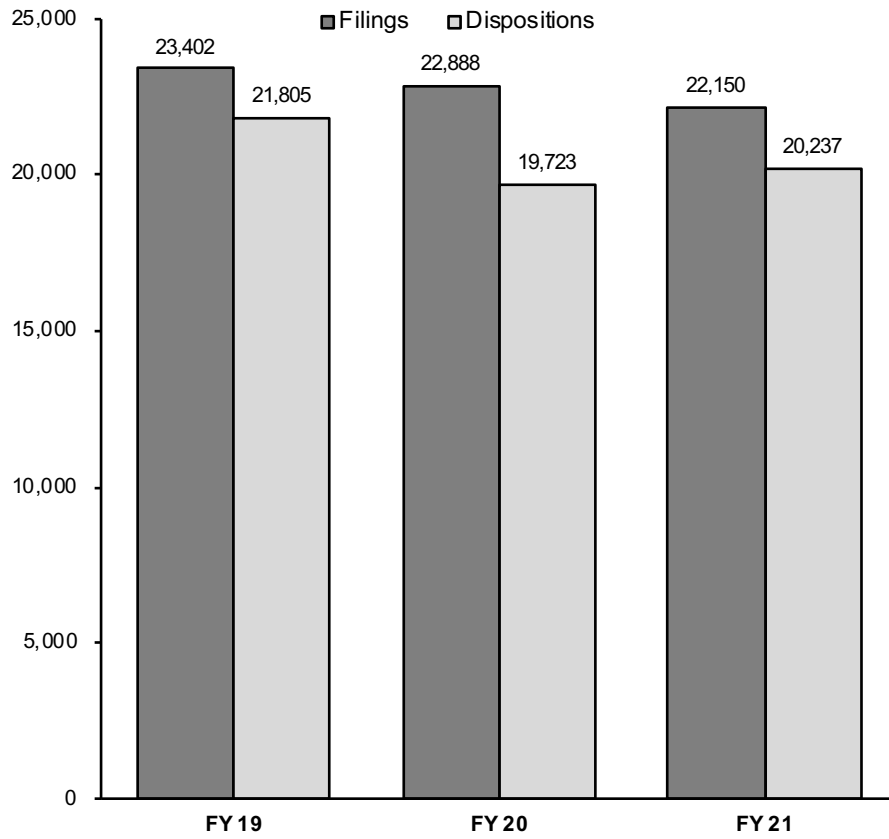
Court	FY 19	FY 20	FY 21	Change	
				FY 19 to FY 21	FY 20 to FY 21
Anchorage	10,765	9,120	9,043	-16%	-1%
Angoon	0	2	1	N/S	N/S
Aniak	50	47	45	-10%	-4%
Bethel	679	704	718	6%	2%
Cordova	29	32	18	-38%	-44%
Delta Junction	34	40	33	-3%	-17%
Dillingham	191	178	249	30%	40%
Emmonak	81	75	68	-16%	-9%
Fairbanks	2,389	2,437	2,505	5%	3%
Fort Yukon	16	20	24	50%	20%
Galena	23	21	14	-39%	-33%
Glennallen	55	49	41	-25%	-16%
Haines	6	6	5	N/S	N/S
Homer	320	245	245	-23%	0%
Hoonah	4	3	4	N/S	N/S
Hooper Bay	59	32	49	-17%	53%
Juneau	1,094	890	948	-13%	7%
Kake ¹	0	Served by Petersburg		N/S	N/S
Kenai	1,104	1,096	1,441	31%	31%
Ketchikan	580	510	424	-27%	-17%
Kodiak	275	278	278	1%	0%
Kotzebue	346	355	306	-12%	-14%
Naknek	61	49	44	-28%	-10%
Nenana	42	48	35	-17%	-27%
Nome	325	293	311	-4%	6%
Palmer	2,157	2,091	2,309	7%	10%
Petersburg	57	62	61	7%	-2%
Prince of Wales	98	110	135	38%	23%
Sand Point	18	18	12	-33%	-33%
Seward	103	120	120	17%	0%
Sitka	242	231	247	2%	7%
Skagway	1	1	2	N/S	N/S
St. Mary's ²	51	71	77	51%	8%
St. Paul	7	7	7	N/S	N/S
Tok	40	29	43	8%	48%
Unalakleet	80	47	44	-45%	-6%
Unalaska	42	40	42	0%	5%
Utqiagvik	291	265	208	-29%	-22%
Valdez	42	67	39	-7%	-42%
Wrangell	47	30	42	-11%	40%
Yakutat	1	4	0	N/S	N/S
Total	21,805	19,723	20,237	-7%	3%
1st District	2,130	1,849	1,869	-12%	1%
2nd District	1,042	960	869	-17%	-9%
3rd District	15,169	13,390	13,888	-8%	4%
4th District	3,464	3,524	3,611	4%	2%

N/S: Numbers 10 or less are not compared statistically.

1. Kake court closed in October 2018.

2. St. Mary's court closed in 2016. Records for filings from the venue are still maintained separately.

**Figure 4.01. Superior Court Filing and Disposition Trends
FY 19 – FY 21**



**Table 4.03. Superior Court Clearance Rates
FY 20 – FY 21**

Court	Filings		Dispositions		Clearance rates	
	FY 21	Change from FY 20	FY 21	Change from FY 20	FY 20	FY 21
Anchorage	9,816	-6%	9,043	-1%	87%	92%
Angeon	0	N/S	1	N/S	N/S	N/S
Aniak	35	-45%	45	-4%	73%	129%
Bethel	790	-4%	718	2%	85%	91%
Cordova	29	16%	18	-44%	128%	62%
Delta Junction	40	3%	33	-17%	103%	83%
Dillingham	273	0%	249	40%	65%	91%
Emmonak	79	-24%	68	-9%	72%	86%
Fairbanks	2,630	-1%	2,505	3%	92%	95%
Fort Yukon	27	17%	24	20%	87%	89%
Galena	14	-22%	14	-33%	117%	100%
Glennallen	56	8%	41	-16%	94%	73%
Haines	10	N/S	5	N/S	N/S	N/S
Homer	338	8%	245	0%	78%	73%
Hoonah	2	N/S	4	N/S	N/S	N/S
Hooper Bay	53	0%	49	53%	60%	93%
Juneau	983	-8%	948	7%	83%	96%
Kake ¹			Served by Petersburg			
Kenai	1,255	-5%	1,441	31%	83%	115%
Ketchikan	483	-5%	424	-17%	101%	88%
Kodiak	295	-18%	278	0%	77%	94%
Kotzebue	375	1%	306	-14%	96%	82%
Naknek	62	-5%	44	-10%	75%	71%
Nenana	38	-10%	35	-27%	114%	92%
Nome	385	3%	311	6%	78%	81%
Palmer	2,909	15%	2,309	10%	83%	79%
Petersburg	64	2%	61	-2%	98%	95%
Prince of Wales	138	-1%	135	23%	79%	98%
Sand Point	11	-58%	12	-33%	69%	109%
Seward	132	-10%	120	0%	82%	91%
Sitka	246	0%	247	7%	94%	100%
Skagway	2	N/S	2	N/S	N/S	N/S
St. Mary's ²	74	-16%	77	8%	81%	104%
St. Paul	6	N/S	7	N/S	N/S	N/S
Tok	50	28%	43	48%	74%	86%
Unalakleet	60	-13%	44	-6%	68%	73%
Unalaska	33	-31%	42	5%	83%	127%
Utqiagvik	242	-25%	208	-22%	82%	86%
Valdez	72	-14%	39	-42%	80%	54%
Wrangell	42	-5%	42	40%	68%	100%
Yakutat	1	N/S	0	N/S	N/S	N/S
Total	22,150	-3%	20,237	3%	86%	91%
1st District	1,971	-6%	1,869	1%	89%	95%
2nd District	1,062	-7%	869	-9%	84%	82%
3rd District	15,287	-3%	13,888	4%	85%	91%
4th District	3,830	-3%	3,611	2%	89%	94%

Clearance rate measures whether a court is keeping up with its incoming caseload. Courts aspire to clear (i.e., dispose of) at least as many cases as have been filed in a period by having a clearance rate of 100 percent or higher.

N/S: Numbers 10 or less are not compared statistically.

1. Kake court closed in October 2018.

2. St. Mary's court closed in 2016. Records for filings from the venue are still maintained separately.

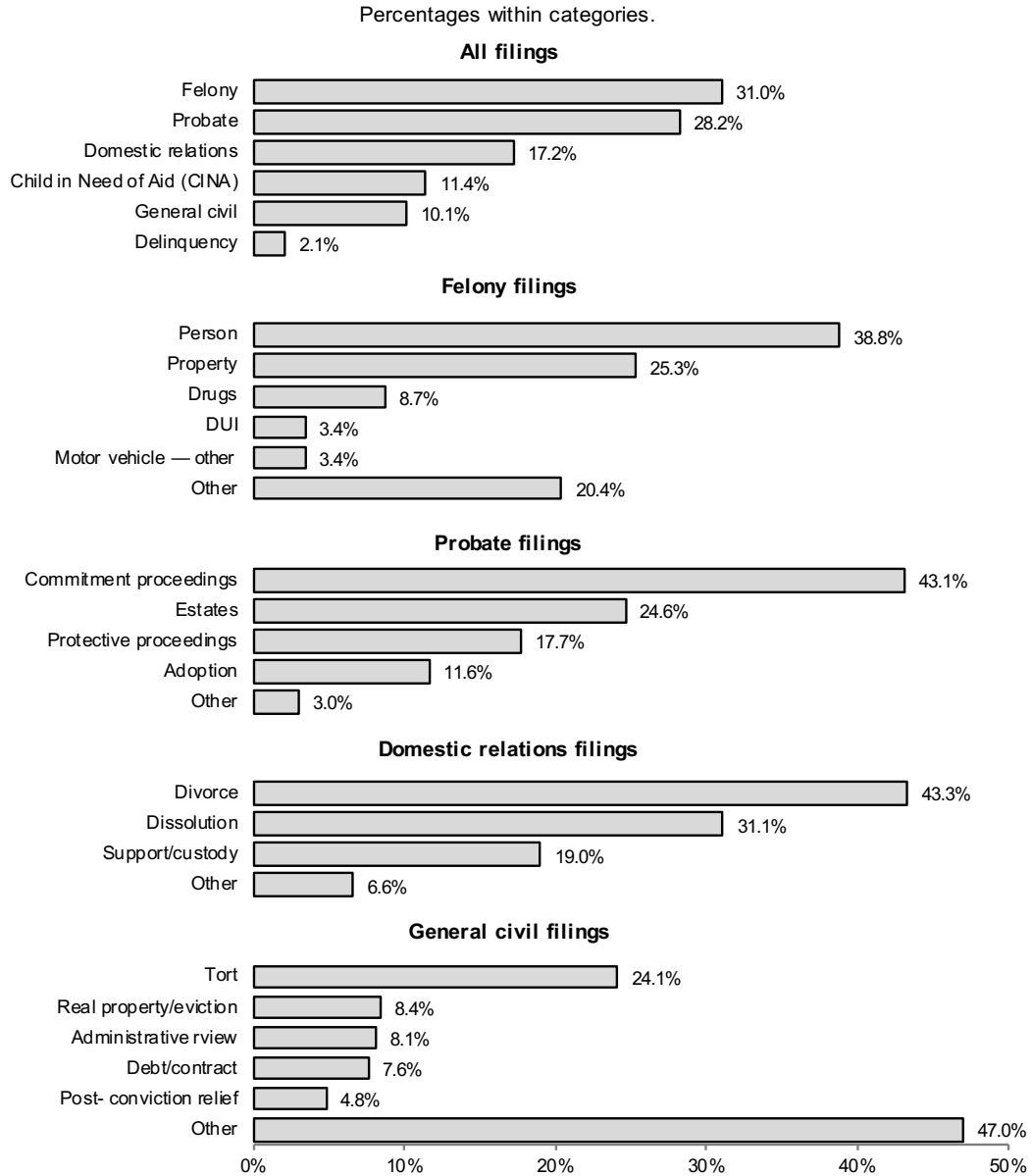
**Table 4.04. Superior Court Filings by Case Type
FY 21**

Court	Felony	CINA	Delinquency	Domestic relations	General civil	Probate	Total
Anchorage	3,035	924	216	1,594	1,146	2,901	9,816
Angoon	0	0	0	0	0	0	0
Aniak	31	0	4	0	0	0	35
Bethel	259	151	26	89	43	222	790
Cordova	16	0	0	5	3	5	29
Delta Junction	10	0	0	14	3	13	40
Dillingham	116	82	7	19	10	39	273
Emmonak	56	16	6	0	0	1	79
Fairbanks	707	335	36	647	266	639	2,630
Fort Yukon	23	0	3	1	0	0	27
Galena	8	0	1	2	1	2	14
Glennallen	21	15	2	11	4	3	56
Haines	9	0	0	1	0	0	10
Homer	110	29	3	61	42	93	338
Hoonah	1	0	0	0	0	1	2
Hooper Bay	43	3	7	0	0	0	53
Juneau	229	79	30	169	127	349	983
Kake ¹				Served by Petersburg			
Kenai	424	102	22	217	113	377	1,255
Ketchikan	122	72	8	74	40	167	483
Kodiak	77	55	2	61	24	76	295
Kotzebue	185	55	14	44	14	63	375
Naknek	35	12	1	6	1	7	62
Nenana	30	0	0	7	1	0	38
Nome	157	61	13	44	21	89	385
Palmer	659	446	48	575	274	907	2,909
Petersburg	18	4	1	15	5	21	64
Prince of Wales	46	18	1	22	7	44	138
Sand Point	9	0	0	0	1	1	11
Seward	76	7	3	13	11	22	132
Sitka	44	8	10	46	29	109	246
Skagway	1	0	0	0	1	0	2
St. Mary's ²	55	18	1	0	0	0	74
St. Paul	6	0	0	0	0	0	6
Tok	37	1	1	5	0	6	50
Unalakleet	60	0	0	0	0	0	60
Unalaska	12	2	2	7	6	4	33
Utqiagvik	98	22	3	41	24	54	242
Valdez	14	13	2	18	11	14	72
Wrangell	14	0	0	7	6	15	42
Yakutat	1	0	0	0	0	0	1
Total	6,854	2,530	473	3,815	2,234	6,244	22,150
% of total	31.0	11.4	2.1	17.2	10.1	28.2	100.0
1st District	485	181	50	334	215	706	1,971
2nd District	500	138	30	129	59	206	1,062
3rd District	4,610	1,687	308	2,587	1,646	4,449	15,287
4th District	1,259	524	85	765	314	883	3,830

1. Kake court closed in October 2018.

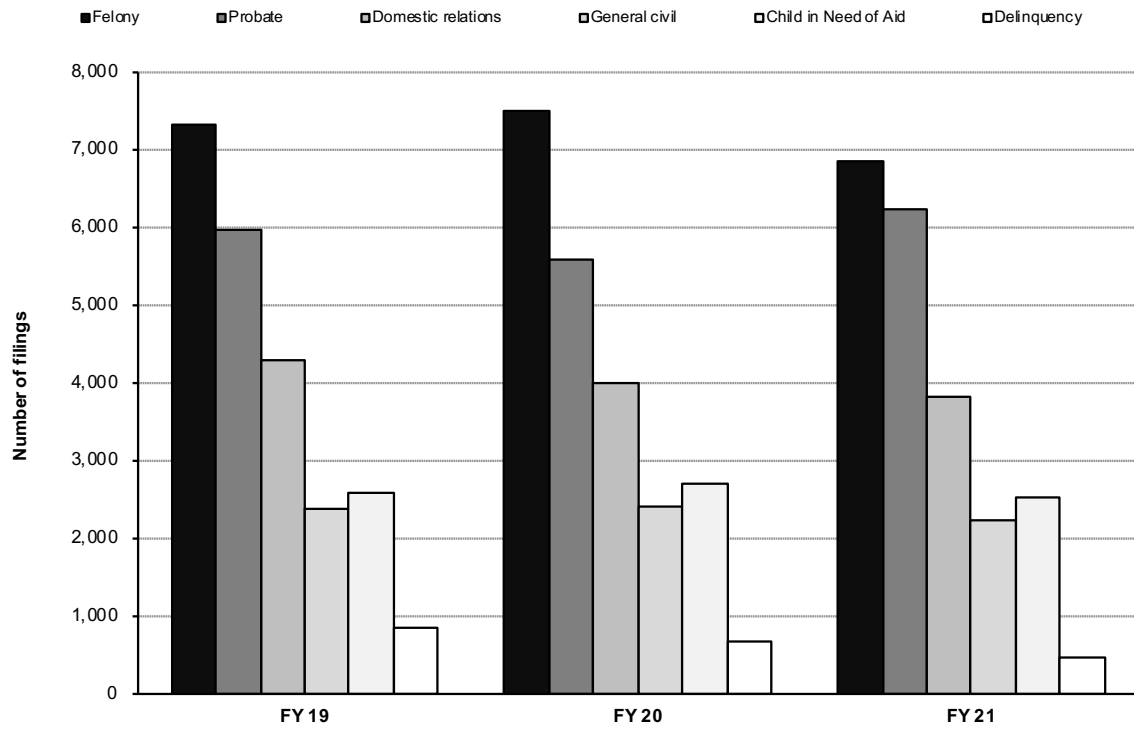
2. St. Mary's court closed in 2016. Records for filings from the venue are still maintained separately.

**Figure 4.02. Composition of Superior Court Filings
FY 21**



This chart analyzes the types of cases filed in Superior Court during FY21. Felony case filings are the major case filing type, comprising 31.0% of total case filings. Probate cases are second with 28.2% of the filings.

**Figure 4.03. Superior Court Filing Trends by Case Type
FY 19 – FY 21**



Filing Type	FY 19	FY 20	FY 21	FY 19 to FY 21 change	FY 20 to FY 21 change
Felony	7,321	7,504	6,854	-6%	-9%
Probate	5,965	5,604	6,244	5%	11%
Domestic relations	4,301	3,994	3,815	-11%	-4%
General civil	2,385	2,407	2,234	-6%	-7%
Child in Need of Aid	2,581	2,714	2,530	-2%	-7%
Delinquency	849	665	473	-44%	-29%
Total	23,402	22,888	22,150	-5%	-3%

**Table 4.05. Superior Court Dispositions by Case Type
FY 21**

Court	Felony	CINA	Delinquency	Domestic relations	General civil	Probate	Total	
Anchorage	2,230	911	204	1,679	1,085	2,934	9,043	
Angoon	1	0	0	0	0	0	1	
Aniak	38	6	1	0	0	0	45	
Bethel	240	107	16	108	45	202	718	
Cordova	5	0	0	8	3	2	18	
Delta Junction	11	0	0	13	2	7	33	
Dillingham	91	51	13	27	10	57	249	
Emmonak	58	6	2	1	0	1	68	
Fairbanks	653	350	26	667	257	552	2,505	
Fort Yukon	23	0	1	0	0	0	24	
Galena	9	0	0	2	1	2	14	
Glennallen	16	10	1	7	3	4	41	
Haines	4	0	0	1	0	0	5	
Homer	79	17	7	54	34	54	245	
Hoonah	3	0	0	0	0	1	4	
Hooper Bay	40	1	8	0	0	0	49	
Juneau	200	60	32	192	131	333	948	
Kake ¹				Served by Petersburg				
Kenai	522	116	42	225	125	411	1,441	
Ketchikan	120	29	7	70	31	167	424	
Kodiak	81	44	7	57	14	75	278	
Kotzebue	142	49	11	46	13	45	306	
Naknek	17	13	0	7	3	4	44	
Nenana	24	0	0	10	1	0	35	
Nome	95	73	16	43	21	63	311	
Palmer	450	389	51	450	235	734	2,309	
Petersburg	15	9	1	16	4	16	61	
Prince of Wales	45	29	1	21	5	34	135	
Sand Point	10	0	0	1	1	0	12	
Seward	62	14	4	13	13	14	120	
Sitka	59	22	5	45	25	91	247	
Skagway	2	0	0	0	0	0	2	
St. Mary's ²	62	13	2	0	0	0	77	
St. Paul	6	0	0	0	0	1	7	
Tok	27	1	0	9	4	2	43	
Unalakleet	44	0	0	0	0	0	44	
Unalaska	18	1	3	13	2	5	42	
Utqiagvik	60	27	4	47	13	57	208	
Valdez	5	4	0	13	7	10	39	
Wrangell	12	0	0	12	6	12	42	
Yakutat	0	0	0	0	0	0	0	
Total	5,579	2,352	465	3,857	2,094	5,890	20,237	
% of total	27.6	11.6	2.3	19.1	10.3	29.1	100.0	
1st District	461	149	46	357	202	654	1,869	
2nd District	341	149	31	136	47	165	869	
3rd District	3,592	1,570	332	2,554	1,535	4,305	13,888	
4th District	1,185	484	56	810	310	766	3,611	

1. Kake court closed in October 2018.

2. St. Mary's court closed in 2016. Records for filings from the venue are still maintained separately.

**Table 4.06. Felony Case Filings
FY 19 – FY 21**

Court	FY 19	FY 20	FY 21	Change	
				FY 19 to FY 21	FY 20 to FY 21
Anchorage	3,356	3,337	3,035	-10%	-9%
Angoon	2	1	0	N/S	N/S
Aniak	59	52	31	-47%	-40%
Bethel	294	285	259	-12%	-9%
Cordova	9	6	16	N/S	N/S
Delta Junction	10	18	10	N/S	N/S
Dillingham	114	129	116	2%	-10%
Emmonak	73	81	56	-23%	-31%
Fairbanks	716	776	707	-1%	-9%
Fort Yukon	22	22	23	5%	5%
Galena	22	15	8	N/S	N/S
Glennallen	25	18	21	-16%	17%
Haines	6	5	9	N/S	N/S
Homer	103	118	110	7%	-7%
Hoonah	2	7	1	N/S	N/S
Hooper Bay	36	39	43	19%	10%
Juneau	230	288	229	0%	-20%
Kake ¹	0	Served by Petersburg		N/S	N/S
Kenai	482	500	424	-12%	-15%
Ketchikan	143	124	122	-15%	-2%
Kodiak	116	139	77	-34%	-45%
Kotzebue	236	169	185	-22%	9%
Naknek	37	39	35	-5%	-10%
Nenana	43	34	30	-30%	-12%
Nome	123	149	157	28%	5%
Palmer	538	588	659	22%	12%
Petersburg	20	18	18	-10%	0%
Prince of Wales	46	54	46	0%	-15%
Sand Point	16	21	9	N/S	N/S
Seward	65	81	76	17%	-6%
Sitka	61	61	44	-28%	-28%
Skagway	1	1	1	N/S	N/S
St. Mary's ²	47	75	55	17%	-27%
St. Paul	8	7	6	N/S	N/S
Tok	24	29	37	54%	28%
Unalakleet	76	67	60	-21%	-10%
Unalaska	28	20	12	-57%	-40%
Utqiagvik	97	93	98	1%	5%
Valdez	12	25	14	17%	-44%
Wrangell	18	11	14	-22%	27%
Yakutat	5	2	1	N/S	N/S
Total	7,321	7,504	6,854	-6%	-9%
1st District	534	572	485	-9%	-15%
2nd District	532	478	500	-6%	5%
3rd District	4,909	5,028	4,610	-6%	-8%
4th District	1,346	1,426	1,259	-6%	-12%

N/S: Numbers 10 or less are not compared statistically.

1. Kake court closed in October 2018.

2. St. Mary's court closed in 2016. Records for filings from the venue are still maintained separately.

**Table 4.07. Felony Filings by Case Type
FY 21**

Court	Person	Property	Drugs	Weapon	Public order	DUI	Reckless driving	Motor	Protective	Fish & Game	Other	Total
								vehicle — other	order violation			
Anchorage	1,110	826	183	111	16	84	0	76	0	0	629	3,035
Angeon	0	0	0	0	0	0	0	0	0	0	0	0
Aniak	21	4	0	2	0	0	0	0	0	0	4	31
Bethel	169	35	11	6	10	7	0	3	0	0	18	259
Cordova	3	4	5	0	0	0	0	2	0	0	2	16
Delta Junction	3	4	0	1	0	0	0	1	0	0	1	10
Dillingham	59	29	7	0	2	4	0	3	0	0	12	116
Emmonak	49	1	0	0	3	1	0	0	0	0	2	56
Fairbanks	237	175	55	21	5	29	0	35	0	0	150	707
Fort Yukon	10	3	0	1	0	0	0	0	0	0	9	23
Galena	6	0	0	1	0	0	0	0	0	0	1	8
Glennallen	8	6	0	1	0	4	0	0	0	0	2	21
Haines	1	3	3	0	0	0	0	0	0	0	2	9
Homer	36	25	18	4	1	7	0	5	0	0	14	110
Hoonah	1	0	0	0	0	0	0	0	0	0	0	1
Hooper Bay	32	3	0	0	1	1	0	0	0	0	6	43
Juneau	73	74	17	6	1	5	0	10	0	0	43	229
Kake ¹												
								Served by Petersburg				
Kenai	101	120	95	15	4	20	0	20	0	0	49	424
Ketchikan	39	17	49	6	0	1	0	2	0	0	8	122
Kodiak	36	18	6	2	0	2	0	1	0	0	12	77
Kotzebue	125	23	9	1	15	3	0	1	0	0	8	185
Naknek	17	11	1	1	0	0	0	4	0	0	1	35
Nenana	11	9	0	0	0	0	0	2	0	0	8	30
Nome	99	32	13	1	3	1	0	1	0	0	7	157
Palmer	203	193	84	21	2	43	0	60	0	0	53	659
Petersburg	6	2	6	0	0	0	0	0	0	0	4	18
Prince of Wales	13	13	12	4	0	1	0	1	0	0	2	46
Sand Point	4	4	1	0	0	0	0	0	0	0	0	9
Seward	24	20	10	3	1	6	0	3	0	0	9	76
Sitka	14	21	3	2	0	2	0	0	0	0	2	44
Skagway	0	1	0	0	0	0	0	0	0	0	0	1
St. Mary's ²	43	4	0	0	3	2	0	0	0	0	3	55
St. Paul	6	0	0	0	0	0	0	0	0	0	0	6
Tok	12	9	0	3	1	1	0	1	0	0	10	37
Unalakleet	38	10	0	0	3	2	0	0	0	0	7	60
Unalaska	4	4	1	0	0	2	0	1	0	0	0	12
Utqiagvik	36	20	2	4	8	6	0	2	0	0	20	98
Valdez	5	6	1	0	0	0	0	0	0	0	2	14
Wrangell	6	6	1	1	0	0	0	0	0	0	0	14
Yakutat	0	0	0	0	0	1	0	0	0	0	0	1
Total	2,660	1,735	593	218	79	235	0	234	0	0	1,100	6,854
% of total	38.8	25.3	8.7	3.2	1.2	3.4	0.0	3.4	0.0	0.0	16.0	100.0
1st District	153	137	91	19	1	10	0	13	0	0	61	485
2nd District	298	85	24	6	29	12	0	4	0	0	42	500
3rd District	1,616	1,266	412	158	26	172	0	175	0	0	785	4,610
4th District	593	247	66	35	23	41	0	42	0	0	212	1,259

1. Kake court closed in October 2018.

2. St. Mary's court closed in 2016. Records for filings from the venue are still maintained separately.

**Table 4.08. Criminal Case Types
FY 21**

Person	Public Order
Homicide	Riot
Assault	Disorderly Conduct
Reckless Endangerment	Harassment
Kidnapping	Indecent Viewing or Photography
Custodial Interference	Possess or Distribute Child Pornography
Human Trafficking	Cruelty to Animals
Sex Offenses	Recruiting Gang Members
Robbery	Gambling
Extortion	Alcohol Licensing Laws
Coercion	
Property	Motor Vehicle DUI
Theft	Motor Vehicle Reckless Driving
Burglary	Motor Vehicle Other
Criminal Trespass	Protection Order Violation
Vehicle Theft	Fish and Game
Arson	Other
Criminal Mischief	Offenses against Public Administration
Business and Commercial Offenses	Offenses against Family and Vulnerable Adults
Drugs	All other offenses, including cases in which a charging document was never filed
Misconduct Involving a Controlled Substance	
Manufacture, Delivery or Possession of Imitation Controlled Substance	
Weapons	
Misconduct Involving Weapons	
Criminal Possession of Explosives	
Unlawful Furnishing of Explosives	

Criminal cases typically contain multiple charges. The Alaska Court System categorizes cases for reporting purposes based on the most serious charge.

In FY07 the Alaska Court System changed the way it categorizes criminal cases for annual reporting. The categories now conform to the National Center for State Courts' national model for caseload statistical reporting. This change is intended to make Alaska statistics easier to compile, understand, and compare to those of other jurisdictions.

**Table 4.09. Felony Case Dispositions
FY 19 – FY 21**

Court	FY 19	FY 20	FY 21	Change	
				FY 19 to FY 21	FY 20 to FY 21
Anchorage	3,213	2,710	2,230	-31%	-18%
Angoon	0	2	1	N/S	N/S
Aniak	47	39	38	-19%	-3%
Bethel	224	262	240	7%	-8%
Cordova	7	10	5	N/S	N/S
Delta Junction	11	15	11	0%	-27%
Dillingham	81	86	91	12%	6%
Emmonak	57	55	58	2%	5%
Fairbanks	651	710	653	0%	-8%
Fort Yukon	12	19	23	92%	21%
Galena	20	17	9	N/S	N/S
Glennallen	19	11	16	-16%	45%
Haines	6	6	4	N/S	N/S
Homer	92	103	79	-14%	-23%
Hoonah	4	3	3	N/S	N/S
Hooper Bay	34	26	40	18%	54%
Juneau	212	204	200	-6%	-2%
Kake ¹	0	Served by Petersburg		N/S	N/S
Kenai	342	406	522	53%	29%
Ketchikan	170	141	120	-29%	-15%
Kodiak	105	102	81	-23%	-21%
Kotzebue	181	165	142	-22%	-14%
Naknek	30	29	17	-43%	-41%
Nenana	40	41	24	-40%	-41%
Nome	99	114	95	-4%	-17%
Palmer	490	432	450	-8%	4%
Petersburg	18	19	15	-17%	-21%
Prince of Wales	45	61	45	0%	-26%
Sand Point	10	15	10	N/S	N/S
Seward	43	62	62	44%	0%
Sitka	74	50	59	-20%	18%
Skagway	1	1	2	N/S	N/S
St. Mary's ²	30	58	62	107%	7%
St. Paul	6	5	6	N/S	N/S
Tok	23	20	27	17%	35%
Unalakleet	80	45	44	-45%	-2%
Unalaska	30	16	18	-40%	13%
Utqiagvik	91	103	60	-34%	-42%
Valdez	13	22	5	N/S	N/S
Wrangell	15	7	12	-20%	N/S
Yakutat	0	4	0	N/S	N/S
Total	6,626	6,196	5,579	-16%	-10%
1st District	545	498	461	-15%	-7%
2nd District	451	427	341	-24%	-20%
3rd District	4,481	4,009	3,592	-20%	-10%
4th District	1,149	1,262	1,185	3%	-6%

N/S: Numbers 10 or less are not compared statistically.

1. Kake court closed in October 2018.

2. St. Mary's court closed in 2016. Records for filings from the venue are still maintained separately.

**Table 4.10. Felony Case Dispositions by Manner of Disposition
FY 21**

Court	Cases disposed in District Court ¹						Cases disposed in Superior Court						Total
	Non-trial			Trial		Subtotal	Non-trial			Trial		Subtotal	
	Case dismissed	Guilty plea	Other	Guilty	Not guilty		Case dismissed	Guilty plea	Other	Guilty	Not guilty		
Anchorage	884	536	0	0	0	1,420	107	683	3	13	4	810	2,230
Angoon	0	0	0	0	0	0	0	1	0	0	0	1	1
Aniak	9	3	0	0	0	12	8	18	0	0	0	26	38
Bethel	64	36	1	0	0	101	29	110	0	0	0	139	240
Cordova	3	1	0	0	0	4	0	1	0	0	0	1	5
Delta Junction	5	1	0	0	0	6	0	5	0	0	0	5	11
Dillingham	25	43	0	0	0	68	3	19	0	1	0	23	91
Emmonak	9	8	0	0	0	17	7	34	0	0	0	41	58
Fairbanks	139	108	8	0	0	255	89	301	1	6	1	398	653
Fort Yukon	5	3	1	0	0	9	7	7	0	0	0	14	23
Galena	1	1	0	0	0	2	1	5	0	1	0	7	9
Glennallen	1	6	0	0	0	7	4	5	0	0	0	9	16
Haines	0	1	0	0	0	1	1	2	0	0	0	3	4
Homer	25	22	0	0	0	47	10	22	0	0	0	32	79
Hoonah	0	1	0	0	0	1	0	2	0	0	0	2	3
Hooper Bay	18	5	1	0	0	24	2	14	0	0	0	16	40
Juneau	26	34	11	0	0	71	30	97	0	2	0	129	200
Kake ²							Served by Petersburg						
Kenai	81	121	0	0	0	202	87	229	2	2	0	320	522
Ketchikan	32	32	0	0	0	64	14	41	0	1	0	56	120
Kodiak	7	23	0	0	0	30	7	44	0	0	0	51	81
Kotzebue	27	76	1	0	0	104	5	32	0	1	0	38	142
Naknek	3	8	0	0	0	11	2	4	0	0	0	6	17
Nenana	7	5	0	0	0	12	4	8	0	0	0	12	24
Nome	37	46	0	0	0	83	2	9	0	0	1	12	95
Palmer	86	162	1	0	0	249	21	178	0	2	0	201	450
Petersburg	2	3	0	0	0	5	1	9	0	0	0	10	15
Prince of Wales	11	7	0	0	0	18	8	19	0	0	0	27	45
Sand Point	2	2	0	0	0	4	2	4	0	0	0	6	10
Seward	6	13	0	0	0	19	9	33	0	1	0	43	62
Sitka	4	11	0	0	0	15	5	38	1	0	0	44	59
Skagway	1	0	0	0	0	1	1	0	0	0	0	1	2
St. Mary's ³	17	15	0	0	0	32	4	25	0	1	0	30	62
St. Paul	5	1	0	0	0	6	0	0	0	0	0	0	6
Tok	6	6	0	0	0	12	6	8	1	0	0	15	27
Unalakleet	18	20	0	0	0	38	0	6	0	0	0	6	44
Unalaska	8	6	0	0	0	14	2	2	0	0	0	4	18
Utqiagvik	13	15	0	0	2	30	13	17	0	0	0	30	60
Valdez	0	4	0	0	0	4	0	1	0	0	0	1	5
Wrangell	1	1	0	0	0	2	2	8	0	0	0	10	12
Yakutat	0	0	0	0	0	0	0	0	0	0	0	0	0
Total	1,588	1,386	24	0	2	3,000	493	2,041	8	31	6	2,579	5,579
% of total	28.6	24.8	0.4	0.0	0.0	53.8	8.8	36.6	0.1	0.6	0.1	46.2	100.0
1st District	77	90	11	0	0	178	62	217	1	3	0	283	461
2nd District	95	157	1	0	2	255	20	64	0	1	1	86	341
3rd District	1,136	948	1	0	0	2,085	254	1,225	5	19	4	1,507	3,592
4th District	280	191	11	0	0	482	157	535	2	8	1	703	1,185

Note: Due to the covid pandemic, jury trials were suspended for various periods at various locations throughout FY21.

1. All felony charges were either reduced to misdemeanors or dismissed while these cases were still in District Court. Convictions in these cases were for misdemeanors only.

2.Kake court closed in October 2018.

3. St. Mary's court closed in 2016. Records for filings from the venue are still maintained separately.

**Table 4.11. Post-judgment Filings: Felony Petitions to
Revoke Probation
FY 19 – FY 21**

Court	FY 19	FY 20	FY 21	Change	
				FY 19 to FY 21	FY 20 to FY 21
Anchorage	1,460	1,080	843	-42%	-22%
Angoon	3	3	2	N/S	N/S
Aniak	30	21	13	-57%	-38%
Bethel	147	180	104	-29%	-42%
Cordova	2	0	0	N/S	N/S
Delta Junction	1	3	2	N/S	N/S
Dillingham	19	22	20	5%	-9%
Emmonak	26	39	34	31%	-13%
Fairbanks	460	329	262	-43%	-20%
Fort Yukon	4	9	12	N/S	N/S
Galena	11	5	4	N/S	N/S
Glennallen	10	2	4	N/S	N/S
Haines	3	1	1	N/S	N/S
Homer	96	39	50	-48%	28%
Hoonah	2	1	0	N/S	N/S
Hooper Bay	40	14	17	-57%	21%
Juneau	193	103	91	-53%	-12%
Kake ¹	0	Served by Petersburg		N/S	N/S
Kenai	403	256	257	-36%	0%
Ketchikan	240	208	138	-42%	-34%
Kodiak	68	78	65	-4%	-17%
Kotzebue	120	91	66	-45%	-27%
Naknek	24	12	8	N/S	N/S
Nenana	9	11	5	N/S	N/S
Nome	69	66	54	-22%	-18%
Palmer	460	296	208	-55%	-30%
Petersburg	5	6	11	N/S	N/S
Prince of Wales	28	65	51	82%	-22%
Sand Point	7	2	2	N/S	N/S
Seward	25	33	27	8%	-18%
Sitka	41	17	18	-56%	6%
Skagway	1	0	1	N/S	N/S
St. Mary's ²	14	28	18	29%	-36%
St. Paul	1	2	1	N/S	N/S
Tok	11	5	8	N/S	N/S
Unalakleet	26	15	13	-50%	-13%
Unalaska	6	8	6	N/S	N/S
Utqiagvik	38	24	20	-47%	-17%
Valdez	6	4	9	N/S	N/S
Wrangell	5	6	7	N/S	N/S
Yakutat	1	0	0	N/S	N/S
Total	4,115	3,084	2,452	-40%	-20%
1st District	522	410	320	-39%	-22%
2nd District	253	196	153	-40%	-22%
3rd District	2,587	1,834	1,500	-42%	-18%
4th District	753	644	479	-36%	-26%

N/S: Numbers 10 or less are not compared statistically.

1. Kake court closed in October 2018.

2. St. Mary's court closed in 2016. Records for filings from the venue are still maintained separately.

**Table 4.12. Probate Case Filings
FY 19 – FY 21**

Court	FY 19	FY 20	FY 21	Change	
				FY 19 to FY 21	FY 20 to FY 21
Anchorage	2,910	2,809	2,901	0%	3%
Angoon	0	0	0	N/S	N/S
Aniak	0	0	0	N/S	N/S
Bethel	237	196	222	-6%	13%
Cordova	9	5	5	N/S	N/S
Delta Junction	13	3	13	0%	N/S
Dillingham	35	46	39	11%	-15%
Emmonak	0	0	1	N/S	N/S
Fairbanks	683	590	639	-6%	8%
Fort Yukon	0	0	0	N/S	N/S
Galena	0	1	2	N/S	N/S
Glennallen	9	5	3	N/S	N/S
Haines	0	0	0	N/S	N/S
Homer	80	77	93	16%	21%
Hoonah	0	0	1	N/S	N/S
Hooper Bay	0	0	0	N/S	N/S
Juneau	484	371	349	-28%	-6%
Kake ¹	0	Served by Petersburg		N/S	N/S
Kenai	348	284	377	8%	33%
Ketchikan	225	211	167	-26%	-21%
Kodiak	58	67	76	31%	13%
Kotzebue	51	54	63	24%	17%
Naknek	9	4	7	N/S	N/S
Nenana	0	0	0	N/S	N/S
Nome	88	61	89	1%	46%
Palmer	508	583	907	79%	56%
Petersburg	18	16	21	17%	31%
Prince of Wales	16	17	44	175%	159%
Sand Point	2	3	1	N/S	N/S
Seward	28	20	22	-21%	10%
Sitka	69	75	109	58%	45%
Skagway	0	0	0	N/S	N/S
St. Mary's ²	0	0	0	N/S	N/S
St. Paul	0	0	0	N/S	N/S
Tok	2	0	6	N/S	N/S
Unalakleet	0	2	0	N/S	N/S
Unalaska	3	5	4	N/S	N/S
Utqiagvik	63	70	54	-14%	-23%
Valdez	3	15	14	N/S	-7%
Wrangell	14	14	15	7%	7%
Yakutat	0	0	0	N/S	N/S
Total	5,965	5,604	6,244	5%	11%
1st District	826	704	706	-15%	0%
2nd District	202	187	206	2%	10%
3rd District	4,002	3,923	4,449	11%	13%
4th District	935	790	883	-6%	12%

N/S: Numbers 10 or less are not compared statistically.

1. Kake court closed in October 2018.

2. St. Mary's court closed in 2016. Records for filings from the venue are still maintained separately.

**Table 4.13. Probate Filings by Case Type
FY 21**

Court	Adoptions	Estates	Commitment proceedings	Protective proceedings¹	Minor proceedings²	Other	Total	
Anchorage	277	604	1,410	491	80	39	2,901	
Angeon	0	0	0	0	0	0	0	
Aniak	0	0	0	0	0	0	0	
Bethel	21	19	143	27	12	0	222	
Cordova	0	4	0	0	1	0	5	
Delta Junction	2	6	2	3	0	0	13	
Dillingham	17	9	7	6	0	0	39	
Emmonak	0	0	1	0	0	0	1	
Fairbanks	105	234	145	142	8	5	639	
Fort Yukon	0	0	0	0	0	0	0	
Galena	0	0	2	0	0	0	2	
Glennallen	2	0	0	1	0	0	3	
Haines	0	0	0	0	0	0	0	
Homer	7	41	19	25	1	0	93	
Hoonah	0	0	1	0	0	0	1	
Hooper Bay	0	0	0	0	0	0	0	
Juneau	20	98	171	49	6	5	349	
Kake ³				Served by Petersburg				
Kenai	58	154	72	85	8	0	377	
Ketchikan	16	50	82	18	1	0	167	
Kodiak	12	25	25	13	1	0	76	
Kotzebue	2	2	41	14	4	0	63	
Naknek	3	1	1	2	0	0	7	
Nenana	0	0	0	0	0	0	0	
Nome	8	15	38	28	0	0	89	
Palmer	146	197	425	127	11	1	907	
Petersburg	2	11	3	5	0	0	21	
Prince of Wales	4	14	22	4	0	0	44	
Sand Point	0	0	0	1	0	0	1	
Seward	3	4	5	8	2	0	22	
Sitka	2	23	41	42	0	1	109	
Skagway	0	0	0	0	0	0	0	
St. Mary's ⁴	0	0	0	0	0	0	0	
St. Paul	0	0	0	0	0	0	0	
Tok	4	1	0	1	0	0	6	
Unalakleet	0	0	0	0	0	0	0	
Unalaska	0	3	1	0	0	0	4	
Utqiagvik	9	12	24	9	0	0	54	
Valdez	7	4	1	1	1	0	14	
Wrangell	0	6	8	1	0	0	15	
Yakutat	0	0	0	0	0	0	0	
Total	727	1,537	2,690	1,103	136	51	6,244	
% of total	11.6	24.6	43.1	17.7	2.2	0.8	100.0	
1st District	44	202	328	119	7	6	706	
2nd District	19	29	103	51	4	0	206	
3rd District	532	1,046	1,966	760	105	40	4,449	
4th District	132	260	293	173	20	5	883	

1. Guardianships, conservatorships, etc.

2. Minor settlements, emancipations, etc.

3. Kake court closed in October 2018.

4. St. Mary's court closed in 2016. Records for filings from the venue are still maintained separately.

**Table 4.14. Probate Case Dispositions
FY 19 – FY 21**

Court	FY 19	FY 20	FY 21	Change	
				FY 19 to FY 21	FY 20 to FY 21
Anchorage	3,221	2,297	2,934	-9%	28%
Angoon	0	0	0	N/S	N/S
Aniak	0	0	0	N/S	N/S
Bethel	231	170	202	-13%	19%
Cordova	12	9	2	N/S	N/S
Delta Junction	0	5	7	N/S	N/S
Dillingham	35	28	57	63%	104%
Emmonak	0	0	1	N/S	N/S
Fairbanks	592	556	552	-7%	-1%
Fort Yukon	0	0	0	N/S	N/S
Galena	0	0	2	N/S	N/S
Glennallen	8	5	4	N/S	N/S
Haines	0	0	0	N/S	N/S
Homer	89	51	54	-39%	6%
Hoonah	0	0	1	N/S	N/S
Hooper Bay	0	0	0	N/S	N/S
Juneau	480	338	333	-31%	-1%
Kake ¹	0	Served by Petersburg		N/S	N/S
Kenai	251	211	411	64%	95%
Ketchikan	200	194	167	-16%	-14%
Kodiak	50	58	75	50%	29%
Kotzebue	37	39	45	22%	15%
Naknek	10	5	4	N/S	N/S
Nenana	0	0	0	N/S	N/S
Nome	84	50	63	-25%	26%
Palmer	391	449	734	88%	63%
Petersburg	21	16	16	-24%	0%
Prince of Wales	13	15	34	162%	127%
Sand Point	3	2	0	N/S	N/S
Seward	17	25	14	-18%	-44%
Sitka	73	70	91	25%	30%
Skagway	0	0	0	N/S	N/S
St. Mary's ²	0	0	0	N/S	N/S
St. Paul	0	0	1	N/S	N/S
Tok	1	0	2	N/S	N/S
Unalakleet	0	2	0	N/S	N/S
Unalaska	2	3	5	N/S	N/S
Utqiagvik	49	54	57	16%	6%
Valdez	5	4	10	N/S	N/S
Wrangell	13	10	12	-8%	N/S
Yakutat	0	0	0	N/S	N/S
Total	5,888	4,666	5,890	0%	26%
1st District	800	643	654	-18%	2%
2nd District	170	145	165	-3%	14%
3rd District	4,094	3,147	4,305	5%	37%
4th District	824	731	766	-7%	5%

N/S: Numbers 10 or less are not compared statistically.

1. Kake court closed in October 2018.

2. St. Mary's court closed in 2016. Records for filings from the venue are still maintained separately.

**Table 4.15. Domestic Relations Case Filings
FY 19 – FY 21**

Court	FY 19	FY 20	FY 21	Change	
				FY 19 to FY 21	FY 20 to FY 21
Anchorage	1,997	1,780	1,594	-20%	-10%
Angoon	0	0	0	N/S	N/S
Aniak	0	0	0	N/S	N/S
Bethel	80	105	89	11%	-15%
Cordova	5	7	5	N/S	N/S
Delta Junction	15	16	14	-7%	-12%
Dillingham	23	23	19	-17%	-17%
Emmonak	0	1	0	N/S	N/S
Fairbanks	682	588	647	-5%	10%
Fort Yukon	0	1	1	N/S	N/S
Galena	0	0	2	N/S	N/S
Glennallen	11	7	11	0%	N/S
Haines	0	0	1	N/S	N/S
Homer	60	56	61	2%	9%
Hoonah	0	0	0	N/S	N/S
Hooper Bay	0	0	0	N/S	N/S
Juneau	170	178	169	-1%	-5%
Kake ¹	0	Served by Petersburg		N/S	N/S
Kenai	232	218	217	-6%	0%
Ketchikan	108	90	74	-31%	-18%
Kodiak	59	61	61	3%	0%
Kotzebue	55	46	44	-20%	-4%
Naknek	2	6	6	N/S	N/S
Nenana	6	7	7	N/S	N/S
Nome	32	40	44	38%	10%
Palmer	574	543	575	0%	6%
Petersburg	13	17	15	15%	-12%
Prince of Wales	20	22	22	10%	0%
Sand Point	0	0	0	N/S	N/S
Seward	16	20	13	-19%	-35%
Sitka	43	42	46	7%	10%
Skagway	0	0	0	N/S	N/S
St. Mary's ²	0	0	0	N/S	N/S
St. Paul	1	0	0	N/S	N/S
Tok	15	7	5	N/S	N/S
Unalakleet	0	0	0	N/S	N/S
Unalaska	7	15	7	N/S	N/S
Utqiagvik	38	60	41	8%	-32%
Valdez	25	24	18	-28%	-25%
Wrangell	12	14	7	N/S	N/S
Yakutat	0	0	0	N/S	N/S
Total	4,301	3,994	3,815	-11%	-4%
1st District	366	363	334	-9%	-8%
2nd District	125	146	129	3%	-12%
3rd District	3,012	2,760	2,587	-14%	-6%
4th District	798	725	765	-4%	6%

N/S: Numbers 10 or less are not compared statistically.

1. Kake court closed in October 2018.

2. St. Mary's court closed in 2016. Records for filings from the venue are still maintained separately.

**Table 4.16. Domestic Relations Filings by Case Type
FY 21**

Court	Divorce	Dissolution	Support/ custody	Other	Total
Anchorage	690	543	288	73	1,594
Angeon	0	0	0	0	0
Aniak	0	0	0	0	0
Bethel	19	15	20	35	89
Cordova	1	2	2	0	5
Delta Junction	5	6	2	1	14
Dillingham	3	6	4	6	19
Emmonak	0	0	0	0	0
Fairbanks	359	160	94	34	647
Fort Yukon	0	0	1	0	1
Galena	0	1	0	1	2
Glennallen	3	3	1	4	11
Haines	0	1	0	0	1
Homer	25	20	14	2	61
Hoonah	0	0	0	0	0
Hooper Bay	0	0	0	0	0
Juneau	75	60	26	8	169
Kake ¹			Served by Petersburg		
Kenai	91	66	48	12	217
Ketchikan	34	19	16	5	74
Kodiak	25	22	12	2	61
Kotzebue	12	8	10	14	44
Naknek	3	0	1	2	6
Nenana	0	4	0	3	7
Nome	11	6	10	17	44
Palmer	236	182	139	18	575
Petersburg	4	5	5	1	15
Prince of Wales	4	9	9	0	22
Sand Point	0	0	0	0	0
Seward	2	7	1	3	13
Sitka	20	17	9	0	46
Skagway	0	0	0	0	0
St. Mary's ²	0	0	0	0	0
St. Paul	0	0	0	0	0
Tok	1	2	2	0	5
Unalakleet	0	0	0	0	0
Unalaska	4	3	0	0	7
Utqiagvik	17	4	8	12	41
Valdez	3	12	3	0	18
Wrangell	4	2	1	0	7
Yakutat	0	0	0	0	0
Total	1,651	1,185	726	253	3,815
% of total	43.3	31.1	19.0	6.6	100.0
1st District	141	113	66	14	334
2nd District	40	18	28	43	129
3rd District	1,086	866	513	122	2,587
4th District	384	188	119	74	765

1. Kake court closed in October 2018.

3. St. Mary's court closed in 2016. Records for filings from the venue are still maintained separately.

**Table 4.17. Domestic Relations Case Dispositions
FY 19 – FY 21**

Court	FY 19	FY 20	FY 21	Change	
				FY 19 to FY 21	FY 20 to FY 21
Anchorage	1,924	1,655	1,679	-13%	1%
Angoon	0	0	0	N/S	N/S
Aniak	0	0	0	N/S	N/S
Bethel	79	82	108	37%	32%
Cordova	5	6	8	N/S	N/S
Delta Junction	17	17	13	-24%	-24%
Dillingham	20	20	27	35%	35%
Emmonak	0	0	1	N/S	N/S
Fairbanks	603	570	667	11%	17%
Fort Yukon	0	1	0	N/S	N/S
Galena	0	0	2	N/S	N/S
Glennallen	12	7	7	N/S	N/S
Haines	0	0	1	N/S	N/S
Homer	60	46	54	-10%	17%
Hoonah	0	0	0	N/S	N/S
Hooper Bay	0	0	0	N/S	N/S
Juneau	143	160	192	34%	20%
Kake ¹	0	Served by Petersburg		N/S	N/S
Kenai	230	193	225	-2%	17%
Ketchikan	116	95	70	-40%	-26%
Kodiak	68	51	57	-16%	12%
Kotzebue	42	52	46	10%	-12%
Naknek	3	3	7	N/S	N/S
Nenana	2	4	10	N/S	N/S
Nome	29	29	43	48%	48%
Palmer	578	517	450	-22%	-13%
Petersburg	8	15	16	N/S	7%
Prince of Wales	26	23	21	-19%	-9%
Sand Point	1	0	1	N/S	N/S
Seward	16	17	13	-19%	-24%
Sitka	45	50	45	0%	-10%
Skagway	0	0	0	N/S	N/S
St. Mary's ²	0	0	0	N/S	N/S
St. Paul	1	1	0	N/S	N/S
Tok	11	9	9	N/S	N/S
Unalakleet	0	0	0	N/S	N/S
Unalaska	3	9	13	N/S	N/S
Utqiagvik	41	23	47	15%	104%
Valdez	16	20	13	-19%	-35%
Wrangell	12	10	12	0%	N/S
Yakutat	0	0	0	N/S	N/S
Total	4,111	3,685	3,857	-6%	5%
1st District	350	353	357	2%	1%
2nd District	112	104	136	21%	31%
3rd District	2,937	2,545	2,554	-13%	0%
4th District	712	683	810	14%	19%

N/S: Numbers 10 or less are not compared statistically.

1. Kake court closed in October 2018.

2. St. Mary's court closed in 2016. Records for filings from the venue are still maintained separately.

**Table 4.18. Domestic Relations Case Dispositions by
Manner of Disposition
FY 21**

Court	Stage of disposition				Total
	Dismissed	Dissolution/ divorce hearing	Trial	Other	
Anchorage	250	996	263	170	1,679
Angeon	0	0	0	0	0
Aniak	0	0	0	0	0
Bethel	25	42	3	38	108
Cordova	0	4	3	1	8
Delta Junction	2	10	1	0	13
Dillingham	4	13	0	10	27
Emmonak	0	1	0	0	1
Fairbanks	131	334	160	42	667
Fort Yukon	0	0	0	0	0
Galena	1	1	0	0	2
Glennallen	1	1	0	5	7
Haines	0	0	0	1	1
Homer	13	32	6	3	54
Hoonah	0	0	0	0	0
Hooper Bay	0	0	0	0	0
Juneau	44	112	12	24	192
Kake ¹					
		Served by Petersburg			
Kenai	41	142	26	16	225
Ketchikan	15	25	25	5	70
Kodiak	3	40	13	1	57
Kotzebue	17	13	0	16	46
Naknek	1	1	2	3	7
Nenana	0	4	0	6	10
Nome	7	12	3	21	43
Palmer	53	301	72	24	450
Petersburg	1	12	2	1	16
Prince of Wales	2	18	1	0	21
Sand Point	0	1	0	0	1
Seward	1	12	0	0	13
Sitka	3	35	3	4	45
Skagway	0	0	0	0	0
St. Mary's ²	0	0	0	0	0
St. Paul	0	0	0	0	0
Tok	3	0	5	1	9
Unalakleet	0	0	0	0	0
Unalaska	3	10	0	0	13
Utqiagvik	22	9	0	16	47
Valdez	0	10	3	0	13
Wrangell	3	6	3	0	12
Yakutat	0	0	0	0	0
Total	646	2,197	606	408	3,857
% of total	16.7	57.0	15.7	10.6	100.0
1st District	68	208	46	35	357
2nd District	46	34	3	53	136
3rd District	370	1,563	388	233	2,554
4th District	162	392	169	87	810

1. Kake court closed in October 2018.

2. St. Mary's court closed in 2016. Records for filings from the venue are still maintained separately.

**Table 4.19. Post-judgment Filings: Motions to Modify
Custody, Support or Visitation
FY 19 – FY 21**

Court	FY 19	FY 20	FY 21	Change	
				FY 19 to FY 21	FY 20 to FY 21
Anchorage	617	490	409	-34%	-17%
Angoon	0	0	0	N/S	N/S
Aniak	0	0	0	N/S	N/S
Bethel	6	3	3	N/S	N/S
Cordova	3	3	5	N/S	N/S
Delta Junction	1	1	4	N/S	N/S
Dillingham	13	10	4	N/S	N/S
Emmonak	0	0	0	N/S	N/S
Fairbanks	143	143	131	-8%	-8%
Fort Yukon	0	0	0	N/S	N/S
Galena	0	0	0	N/S	N/S
Glennallen	5	4	1	N/S	N/S
Haines	0	0	0	N/S	N/S
Homer	16	18	12	-25%	-33%
Hoonah	0	0	0	N/S	N/S
Hooper Bay	0	0	0	N/S	N/S
Juneau	38	45	23	-39%	-49%
Kake ¹	0	Served by Petersburg		N/S	N/S
Kenai	102	82	77	-25%	-6%
Ketchikan	43	25	33	-23%	32%
Kodiak	15	22	13	-13%	-41%
Kotzebue	7	10	5	N/S	N/S
Naknek	1	3	1	N/S	N/S
Nenana	1	0	0	N/S	N/S
Nome	8	3	6	N/S	N/S
Palmer	224	201	169	-25%	-16%
Petersburg	6	4	10	N/S	N/S
Prince of Wales	4	1	4	N/S	N/S
Sand Point	0	0	0	N/S	N/S
Seward	3	5	4	N/S	N/S
Sitka	13	7	13	0%	N/S
Skagway	0	0	0	N/S	N/S
St. Mary's ²	0	1	0	N/S	N/S
St. Paul	0	0	0	N/S	N/S
Tok	0	3	1	N/S	N/S
Unalakleet	0	0	0	N/S	N/S
Unalaska	0	0	0	N/S	N/S
Utqiagvik	5	8	1	N/S	N/S
Valdez	11	12	4	N/S	N/S
Wrangell	5	7	3	N/S	N/S
Yakutat	0	0	0	N/S	N/S
Total	1,290	1,111	936	-27%	-16%
1st District	109	89	86	-21%	-3%
2nd District	20	21	12	-40%	-43%
3rd District	1,010	850	699	-31%	-18%
4th District	151	151	139	-8%	-8%

N/S: Numbers 10 or less are not compared statistically.

1. Kake court closed in October 2018.

2. St. Mary's court closed in 2016. Records for filings from the venue are still maintained separately.

**Table 4.20. Superior Court General Civil Case Filings
FY 19 – FY 21**

Court	FY 19	FY 20	FY 21	Change	
				FY 19 to FY 21	FY 20 to FY 21
Anchorage	1,235	1,229	1,146	-7%	-7%
Angoon	0	0	0	N/S	N/S
Aniak	0	0	0	N/S	N/S
Bethel	49	72	43	-12%	-40%
Cordova	3	7	3	N/S	N/S
Delta Junction	9	2	3	N/S	N/S
Dillingham	11	13	10	N/S	N/S
Emmonak	0	0	0	N/S	N/S
Fairbanks	253	276	266	5%	-4%
Fort Yukon	0	0	0	N/S	N/S
Galena	0	1	1	N/S	N/S
Glennallen	6	5	4	N/S	N/S
Haines	0	0	0	N/S	N/S
Homer	36	34	42	17%	24%
Hoonah	0	0	0	N/S	N/S
Hooper Bay	0	0	0	N/S	N/S
Juneau	137	125	127	-7%	2%
Kake ¹	0	Served by Petersburg		N/S	N/S
Kenai	147	118	113	-23%	-4%
Ketchikan	46	35	40	-13%	14%
Kodiak	25	31	24	-4%	-23%
Kotzebue	13	28	14	8%	-50%
Naknek	3	4	1	N/S	N/S
Nenana	2	1	1	N/S	N/S
Nome	22	22	21	-5%	-5%
Palmer	269	285	274	2%	-4%
Petersburg	7	9	5	N/S	N/S
Prince of Wales	1	9	7	N/S	N/S
Sand Point	0	2	1	N/S	N/S
Seward	5	10	11	N/S	N/S
Sitka	40	32	29	-27%	-9%
Skagway	0	0	1	N/S	N/S
St. Mary's ²	0	0	0	N/S	N/S
St. Paul	0	0	0	N/S	N/S
Tok	5	2	0	N/S	N/S
Unalakleet	0	0	0	N/S	N/S
Unalaska	7	7	6	N/S	N/S
Utqiagvik	42	31	24	-43%	-23%
Valdez	7	14	11	N/S	-21%
Wrangell	4	3	6	N/S	N/S
Yakutat	1	0	0	N/S	N/S
Total	2,385	2,407	2,234	-6%	-7%
1st District	236	213	215	-9%	1%
2nd District	77	81	59	-23%	-27%
3rd District	1,754	1,759	1,646	-6%	-6%
4th District	318	354	314	-1%	-11%

N/S: Numbers 10 or less are not compared statistically.

1. Kake court closed in October 2018.

2. St. Mary's court closed in 2016. Records for filings from the venue are still maintained separately.

**Table 4.21. Superior Court General Civil Filings by Case Type
FY 21**

Court	Adminis- trative review	Debt/ contract	Tort	Real property/ eviction	Post- conviction relief	Other	Total
Anchorage	108	104	311	73	44	506	1,146
Angoon	0	0	0	0	0	0	0
Aniak	0	0	0	0	0	0	0
Bethel	1	2	5	1	5	29	43
Cordova	0	0	1	0	0	2	3
Delta Junction	0	0	0	0	0	3	3
Dillingham	2	1	1	0	1	5	10
Emmonak	0	0	0	0	0	0	0
Fairbanks	28	23	60	18	21	116	266
Fort Yukon	0	0	0	0	0	0	0
Galena	0	0	0	0	0	1	1
Glennallen	0	0	0	3	0	1	4
Haines	0	0	0	0	0	0	0
Homer	0	1	5	9	0	27	42
Hoonah	0	0	0	0	0	0	0
Hooper Bay	0	0	0	0	0	0	0
Juneau	7	5	27	12	4	72	127
Kake ¹				Served by Petersburg			
Kenai	3	4	36	11	4	55	113
Ketchikan	3	3	10	4	1	19	40
Kodiak	2	0	5	4	2	11	24
Kotzebue	1	1	1	2	4	5	14
Naknek	0	0	1	0	0	0	1
Nenana	0	0	1	0	0	0	1
Nome	0	1	1	3	3	13	21
Palmer	20	16	54	32	15	137	274
Petersburg	2	0	0	1	0	2	5
Prince of Wales	0	0	3	1	1	2	7
Sand Point	0	0	1	0	0	0	1
Seward	0	0	1	2	0	8	11
Sitka	0	4	5	3	3	14	29
Skagway	0	0	0	0	0	1	1
St. Mary's ²	0	0	0	0	0	0	0
St. Paul	0	0	0	0	0	0	0
Tok	0	0	0	0	0	0	0
Unalakleet	0	0	0	0	0	0	0
Unalaska	0	1	3	1	0	1	6
Utqiagvik	0	2	6	3	0	13	24
Valdez	1	1	1	3	0	5	11
Wrangell	2	0	0	1	0	3	6
Yakutat	0	0	0	0	0	0	0
Total	180	169	539	187	108	1,051	2,234
% of total	8.1	7.6	24.1	8.4	4.8	47.0	100.0
1st District	14	12	45	22	9	113	215
2nd District	1	4	8	8	7	31	59
3rd District	136	128	420	138	66	758	1,646
4th District	29	25	66	19	26	149	314

1. Kake court closed in October 2018.

2. St. Mary's court closed in 2016. Records for filings from the venue are still maintained separately.

**Table 4.22. Superior Court General Civil Case Types
FY 21**

Administrative Review	Eviction/Real Property
Administrative Appeal	Foreclosure
Appeal from District Court	Quiet Title
Petition for Review	Condemnation
	Forcible Entry and Detainer
	Real Estate Matter
Debt/Contract	Application for Post-conviction Relief
Debt — General	
Other Contract	
Tort	Other
Personal Injury — Auto	Change of Name
Personal Injury — Other	Election Contest or Recount Appeal
Wrongful Death	Injunctive Relief
Property Damage — Auto	Habeas Corpus
Property Damage — Other	Registration of Foreign Judgment
Medical Malpractice	Coroner
Legal Malpractice	Order to Show Cause
Other Malpractice	Contempt
	Other

**Table 4.23. Superior Court General Civil Case Dispositions
FY 19 – FY 21**

Court	FY 19	FY 20	FY 21	Change	
				FY 19 to FY 21	FY 20 to FY 21
Anchorage	1,239	1,161	1,085	-12%	-7%
Angoon	0	0	0	N/S	N/S
Aniak	0	0	0	N/S	N/S
Bethel	51	60	45	-12%	-25%
Cordova	0	7	3	N/S	N/S
Delta Junction	5	3	2	N/S	N/S
Dillingham	12	13	10	N/S	N/S
Emmonak	0	0	0	N/S	N/S
Fairbanks	231	248	257	11%	4%
Fort Yukon	0	0	0	N/S	N/S
Galena	0	1	1	N/S	N/S
Glennallen	4	7	3	N/S	N/S
Haines	0	0	0	N/S	N/S
Homer	31	29	34	10%	17%
Hoonah	0	0	0	N/S	N/S
Hooper Bay	0	0	0	N/S	N/S
Juneau	142	103	131	-8%	27%
Kake ¹	0	Served by Petersburg		N/S	N/S
Kenai	111	131	125	13%	-5%
Ketchikan	49	39	31	-37%	-21%
Kodiak	21	36	14	-33%	-61%
Kotzebue	10	24	13	N/S	-46%
Naknek	5	2	3	N/S	N/S
Nenana	0	3	1	N/S	N/S
Nome	24	13	21	-12%	62%
Palmer	258	231	235	-9%	2%
Petersburg	5	12	4	N/S	N/S
Prince of Wales	4	8	5	N/S	N/S
Sand Point	1	1	1	N/S	N/S
Seward	5	9	13	N/S	N/S
Sitka	32	32	25	-22%	-22%
Skagway	0	0	0	N/S	N/S
St. Mary's ²	0	0	0	N/S	N/S
St. Paul	0	0	0	N/S	N/S
Tok	3	0	4	N/S	N/S
Unalakleet	0	0	0	N/S	N/S
Unalaska	5	11	2	N/S	N/S
Utqiagvik	54	22	13	-76%	-41%
Valdez	4	15	7	N/S	N/S
Wrangell	4	2	6	N/S	N/S
Yakutat	1	0	0	N/S	N/S
Total	2,311	2,223	2,094	-9%	-6%
1st District	237	196	202	-15%	3%
2nd District	88	59	47	-47%	-20%
3rd District	1,696	1,653	1,535	-9%	-7%
4th District	290	315	310	7%	-2%

N/S: Numbers 10 or less are not compared statistically.

1. Kake court closed in October 2018.

2. St. Mary's court closed in 2016. Records for filings from the venue are still maintained separately.

**Table 4.24. Superior Court General Civil Case Dispositions
by Manner of Disposition
FY 21**

Court	Stage of disposition						Total
	Dismiss/ settle	Default judgment	Summary judgment	Court trial	Jury trial	Other	
Anchorage	506	31	53	6	0	489	1,085
Angoon	0	0	0	0	0	0	0
Aniak	0	0	0	0	0	0	0
Bethel	19	0	2	0	1	23	45
Cordova	0	0	0	0	0	3	3
Delta Junction	0	0	0	0	0	2	2
Dillingham	9	0	0	0	0	1	10
Emmonak	0	0	0	0	0	0	0
Fairbanks	147	4	15	2	0	89	257
Fort Yukon	0	0	0	0	0	0	0
Galena	0	0	0	0	0	1	1
Glennallen	2	0	0	0	0	1	3
Haines	0	0	0	0	0	0	0
Homer	9	0	3	1	0	21	34
Hoonah	0	0	0	0	0	0	0
Hooper Bay	0	0	0	0	0	0	0
Juneau	46	3	10	0	0	72	131
Kake ¹				Served by Petersburg			
Kenai	56	3	6	3	0	57	125
Ketchikan	9	2	2	2	0	16	31
Kodiak	5	0	1	0	0	8	14
Kotzebue	5	0	1	0	0	7	13
Naknek	2	0	1	0	0	0	3
Nenana	1	0	0	0	0	0	1
Nome	9	2	1	0	0	9	21
Palmer	79	9	10	2	0	135	235
Petersburg	1	0	1	0	0	2	4
Prince of Wales	2	0	1	0	0	2	5
Sand Point	1	0	0	0	0	0	1
Seward	5	0	0	0	1	7	13
Sitka	11	1	0	1	0	12	25
Skagway	0	0	0	0	0	0	0
St. Mary's ²	0	0	0	0	0	0	0
St. Paul	0	0	0	0	0	0	0
Tok	2	0	0	0	0	2	4
Unalakleet	0	0	0	0	0	0	0
Unalaska	1	0	0	0	0	1	2
Utqiagvik	2	0	0	0	0	11	13
Valdez	5	0	0	0	0	2	7
Wrangell	3	0	0	0	0	3	6
Yakutat	0	0	0	0	0	0	0
Total	937	55	107	17	2	976	2,094
% of total	44.8	2.6	5.1	0.8	0.1	46.6	100.0
1st District	72	6	14	3	0	107	202
2nd District	16	2	2	0	0	27	47
3rd District	680	43	74	12	1	725	1,535
4th District	169	4	17	2	1	117	310

Note: Due to the covid pandemic, jury trials were suspended for various periods at various locations throughout FY21.

1. Kake court closed in October 2018.

2. St. Mary's court closed in 2016. Records for filings from the venue are still maintained separately.

**Table 4.25. CINA Case Filings
FY 19 – FY 21**

Court	FY 19	FY 20	FY 21	Change	
				FY 19 to FY 21	FY 20 to FY 21
Anchorage	1,086	1,043	924	-15%	-11%
Angoon	0	0	0	N/S	N/S
Aniak	1	6	0	N/S	N/S
Bethel	75	148	151	101%	2%
Cordova	1	0	0	N/S	N/S
Delta Junction	0	0	0	N/S	N/S
Dillingham	47	51	82	74%	61%
Emmonak	15	18	16	7%	-11%
Fairbanks	367	381	335	-9%	-12%
Fort Yukon	4	0	0	N/S	N/S
Galena	0	0	0	N/S	N/S
Glennallen	11	14	15	36%	7%
Haines	0	0	0	N/S	N/S
Homer	18	17	29	61%	71%
Hoonah	0	0	0	N/S	N/S
Hooper Bay	0	0	3	N/S	N/S
Juneau	85	84	79	-7%	-6%
Kake ¹	0	Served by Petersburg		N/S	N/S
Kenai	176	144	102	-42%	-29%
Ketchikan	37	32	72	95%	125%
Kodiak	48	47	55	15%	17%
Kotzebue	53	62	55	4%	-11%
Naknek	6	12	12	N/S	0%
Nenana	0	0	0	N/S	N/S
Nome	61	78	61	0%	-22%
Palmer	365	426	446	22%	5%
Petersburg	3	3	4	N/S	N/S
Prince of Wales	9	38	18	N/S	-53%
Sand Point	0	0	0	N/S	N/S
Seward	22	10	7	N/S	N/S
Sitka	30	29	8	N/S	N/S
Skagway	0	0	0	N/S	N/S
St. Mary's ²	9	6	18	N/S	N/S
St. Paul	0	0	0	N/S	N/S
Tok	1	0	1	N/S	N/S
Unalakleet	0	0	0	N/S	N/S
Unalaska	0	0	2	N/S	N/S
Utqiagvik	45	58	22	-51%	-62%
Valdez	5	5	13	N/S	N/S
Wrangell	1	2	0	N/S	N/S
Yakutat	0	0	0	N/S	N/S
Total	2,581	2,714	2,530	-2%	-7%
1st District	165	188	181	10%	-4%
2nd District	159	198	138	-13%	-30%
3rd District	1,785	1,769	1,687	-5%	-5%
4th District	472	559	524	11%	-6%

N/S: Numbers 10 or less are not compared statistically.

1. Kake court closed in October 2018.

2. St. Mary's court closed in 2016. Records for filings from the venue are still maintained separately.

**Table 4.26. Delinquency Case Filings
FY 19 – FY 21**

Court	FY 19	FY 20	FY 21	Change	
				FY 19 to FY 21	FY 20 to FY 21
Anchorage	393	282	216	-45%	-23%
Angoon	0	0	0	N/S	N/S
Aniak	4	6	4	N/S	N/S
Bethel	33	19	26	-21%	37%
Cordova	1	0	0	N/S	N/S
Delta Junction	0	0	0	N/S	N/S
Dillingham	9	10	7	N/S	N/S
Emmonak	17	4	6	N/S	N/S
Fairbanks	59	34	36	-39%	6%
Fort Yukon	0	0	3	N/S	N/S
Galena	2	1	1	N/S	N/S
Glennallen	4	3	2	N/S	N/S
Haines	0	0	0	N/S	N/S
Homer	3	12	3	N/S	N/S
Hoonah	0	0	0	N/S	N/S
Hooper Bay	12	14	7	N/S	N/S
Juneau	42	26	30	-29%	15%
Kake ¹	0	Served by Petersburg		N/S	N/S
Kenai	42	56	22	-48%	-61%
Ketchikan	21	15	8	N/S	N/S
Kodiak	6	16	2	N/S	N/S
Kotzebue	32	12	14	-56%	17%
Naknek	2	0	1	N/S	N/S
Nenana	0	0	0	N/S	N/S
Nome	35	25	13	-63%	-48%
Palmer	86	98	48	-44%	-51%
Petersburg	2	0	1	N/S	N/S
Prince of Wales	2	0	1	N/S	N/S
Sand Point	2	0	0	N/S	N/S
Seward	5	5	3	N/S	N/S
Sitka	7	6	10	N/S	N/S
Skagway	0	0	0	N/S	N/S
St. Mary's ²	6	7	1	N/S	N/S
St. Paul	0	0	0	N/S	N/S
Tok	0	1	1	N/S	N/S
Unalakleet	0	0	0	N/S	N/S
Unalaska	3	1	2	N/S	N/S
Utqiagvik	12	11	3	N/S	N/S
Valdez	7	1	2	N/S	N/S
Wrangell	0	0	0	N/S	N/S
Yakutat	0	0	0	N/S	N/S
Total	849	665	473	-44%	-29%
1st District	74	47	50	-32%	6%
2nd District	79	48	30	-62%	-37%
3rd District	563	484	308	-45%	-36%
4th District	133	86	85	-36%	-1%

N/S: Numbers 10 or less are not compared statistically.

1. Kake court closed in October 2018.

2. St. Mary's court closed in 2016. Records for filings from the venue are still maintained separately.

**Table 4.27. CINA and Delinquency Filings by Case Type
FY 21**

Court	Child in Need of Aid	Petitions to terminate parental rights		Total	Delinquency	Petitions to revoke probation		Total
Anchorage	562	362		924	154	62		216
Angeon	0	0		0	0	0		0
Aniak	0	0		0	4	0		4
Bethel	101	50		151	22	4		26
Cordova	0	0		0	0	0		0
Delta Junction	0	0		0	0	0		0
Dillingham	66	16		82	6	1		7
Emmonak	15	1		16	5	1		6
Fairbanks	222	113		335	30	6		36
Fort Yukon	0	0		0	3	0		3
Galena	0	0		0	1	0		1
Glennallen	15	0		15	2	0		2
Haines	0	0		0	0	0		0
Homer	14	15		29	2	1		3
Hoonah	0	0		0	0	0		0
Hooper Bay	1	2		3	7	0		7
Juneau	53	26		79	22	8		30
Kake ¹					Served by Petersburg			
Kenai	53	49		102	19	3		22
Ketchikan	56	16		72	6	2		8
Kodiak	27	28		55	2	0		2
Kotzebue	53	2		55	12	2		14
Naknek	8	4		12	1	0		1
Nenana	0	0		0	0	0		0
Nome	48	13		61	11	2		13
Palmer	328	118		446	39	9		48
Petersburg	2	2		4	1	0		1
Prince of Wales	13	5		18	1	0		1
Sand Point	0	0		0	0	0		0
Seward	3	4		7	3	0		3
Sitka	7	1		8	8	2		10
Skagway	0	0		0	0	0		0
St. Mary's ²	18	0		18	1	0		1
St. Paul	0	0		0	0	0		0
Tok	1	0		1	1	0		1
Unalakleet	0	0		0	0	0		0
Unalaska	2	0		2	2	0		2
Utqiagvik	22	0		22	2	1		3
Valdez	8	5		13	2	0		2
Wrangell	0	0		0	0	0		0
Yakutat	0	0		0	0	0		0
Total	1,698	832		2,530	369	104		473
% of total	67.1	32.9		100.0	78.0	22.0		100.0
1st District	131	50		181	38	12		50
2nd District	123	15		138	25	5		30
3rd District	1,086	601		1,687	232	76		308
4th District	358	166		524	74	11		85

1. Kake court closed in October 2018.

2. St. Mary's court closed in 2016. Records for filings from the venue are still maintained separately.



*District Court
Activity*

Sea anemones, Petersburg (First Judicial District)



Nesting swan, Valdez (Third Judicial District)

**Table 5.01. Total District Court Case Filings
FY 19 – FY 21**

Court	FY 19	FY 20	FY 21	Change	
				FY 19 to FY 21	FY 20 to FY 21
Anchorage¹	36,320	42,396	28,716	-21%	-32%
Angoon	22	20	9	N/S	N/S
Aniak	131	171	67	-49%	-61%
Bethel	1,746	1,814	1,346	-23%	-26%
Cordova	198	130	134	-32%	3%
Delta Junction	639	366	309	-52%	-16%
Dillingham	951	737	580	-39%	-21%
Emmonak	221	289	131	-41%	-55%
Fairbanks	11,513	11,444	9,826	-15%	-14%
Fort Yukon	72	62	74	3%	19%
Galena	77	59	63	-18%	7%
Glennallen	560	421	435	-22%	3%
Haines	189	208	117	-38%	-44%
Homer	1,923	1,699	1,333	-31%	-22%
Hoonah	78	69	59	-24%	-14%
Hooper Bay	282	224	141	-50%	-37%
Juneau	4,760	4,416	3,959	-17%	-10%
Kake ²	11	Served by Petersburg		N/S	N/S
Kenai	6,956	7,297	6,787	-2%	-7%
Ketchikan	1,908	1,874	1,659	-13%	-11%
Kodiak	1,301	1,195	851	-35%	-29%
Kotzebue	734	659	528	-28%	-20%
Naknek	314	321	307	-2%	-4%
Nenana	2,976	2,874	2,417	-19%	-16%
Nome	1,232	1,213	1,305	6%	8%
Palmer	14,121	12,081	13,122	-7%	9%
Petersburg	247	298	323	31%	8%
Prince of Wales	691	638	715	3%	12%
Sand Point	98	109	43	-56%	-61%
Seward	1,899	1,773	1,335	-30%	-25%
Sitka	947	871	742	-22%	-15%
Skagway	19	13	22	16%	69%
St. Mary's ³	146	193	192	32%	-1%
St. Paul	47	12	15	-68%	25%
Tok	622	338	542	-13%	60%
Unalakleet	173	104	154	-11%	48%
Unalaska	564	316	231	-59%	-27%
Utgaiagvik	901	766	607	-33%	-21%
Valdez	407	340	236	-42%	-31%
Wrangell	181	160	149	-18%	-7%
Yakutat	51	71	37	-27%	-48%
Total	96,228	98,041	79,618	-17%	-19%
1st District	9,104	8,638	7,791	-14%	-10%
2nd District	3,040	2,742	2,594	-15%	-5%
3rd District	65,659	68,827	54,125	-18%	-21%
4th District	18,425	17,834	15,108	-18%	-15%

N/S: Numbers 10 or less are not compared statistically.

1. From January 1, 2019 – June 30, 2019 (FY19), the Anchorage Police Department did not file unpaid citations with the court system for entry of default judgment. The FY20 figures include filings for the eighteen-month period from January 1, 2019 – June 30, 2020. From April 30, 2021 – June 30 2021, electronic reporting of minor offense citations was suspended. The delayed citations will be counted in the FY22 numbers.

2. Kake court closed in October 2018.

3. St. Mary's court closed in 2016. Records for filings from the venue are still maintained separately.

**Table 5.02. Total District Court Case Dispositions
FY 19 – FY 21**

Court	FY 19	FY 20	FY 21	Change	
				FY 19 to FY 21	FY 20 to FY 21
Anchorage¹	33,593	43,944	29,222	-13%	-34%
Angeon	16	13	10	N/S	N/S
Aniak	124	141	87	-30%	-38%
Bethel	1,638	1,621	1,515	-8%	-7%
Cordova	178	140	127	-29%	-9%
Delta Junction	640	355	311	-51%	-12%
Dillingham	867	639	687	-21%	8%
Emmonak	195	236	171	-12%	-28%
Fairbanks	11,228	10,630	10,710	-5%	1%
Fort Yukon	63	46	67	6%	46%
Galena	77	60	59	-23%	-2%
Glennallen	487	434	385	-21%	-11%
Haines	192	201	134	-30%	-33%
Homer	1,860	1,597	1,376	-26%	-14%
Hoonah	74	65	62	-16%	-5%
Hooper Bay	272	190	178	-35%	-6%
Juneau	5,282	4,093	3,879	-27%	-5%
Kake ²	17	Served by Petersburg		N/S	N/S
Kenai	6,552	7,460	7,337	12%	-2%
Ketchikan	1,830	1,857	1,627	-11%	-12%
Kodiak	1,218	1,353	920	-24%	-32%
Kotzebue	696	573	398	-43%	-31%
Naknek	322	304	264	-18%	-13%
Nenana	2,769	3,000	2,380	-14%	-21%
Nome	1,261	939	1,277	1%	36%
Palmer	13,302	12,234	12,403	-7%	1%
Petersburg	203	312	300	48%	-4%
Prince of Wales	745	629	703	-6%	12%
Sand Point	87	77	56	-36%	-27%
Seward	1,892	1,726	1,566	-17%	-9%
Sitka	934	808	853	-9%	6%
Skagway	36	17	22	-39%	29%
St. Mary's ³	133	143	183	38%	28%
St. Paul	40	12	2	N/S	N/S
Tok	659	316	590	-10%	87%
Unalakleet	189	121	107	-43%	-12%
Unalaska	552	354	263	-52%	-26%
Utqiagvik	824	680	544	-34%	-20%
Valdez	348	394	227	-35%	-42%
Wrangell	188	142	151	-20%	6%
Yakutat	54	68	30	-44%	-56%
Total	91,637	97,924	81,183	-11%	-17%
1st District	9,571	8,205	7,771	-19%	-5%
2nd District	2,970	2,313	2,326	-22%	1%
3rd District	61,298	70,668	54,835	-11%	-22%
4th District	17,798	16,738	16,251	-9%	-3%

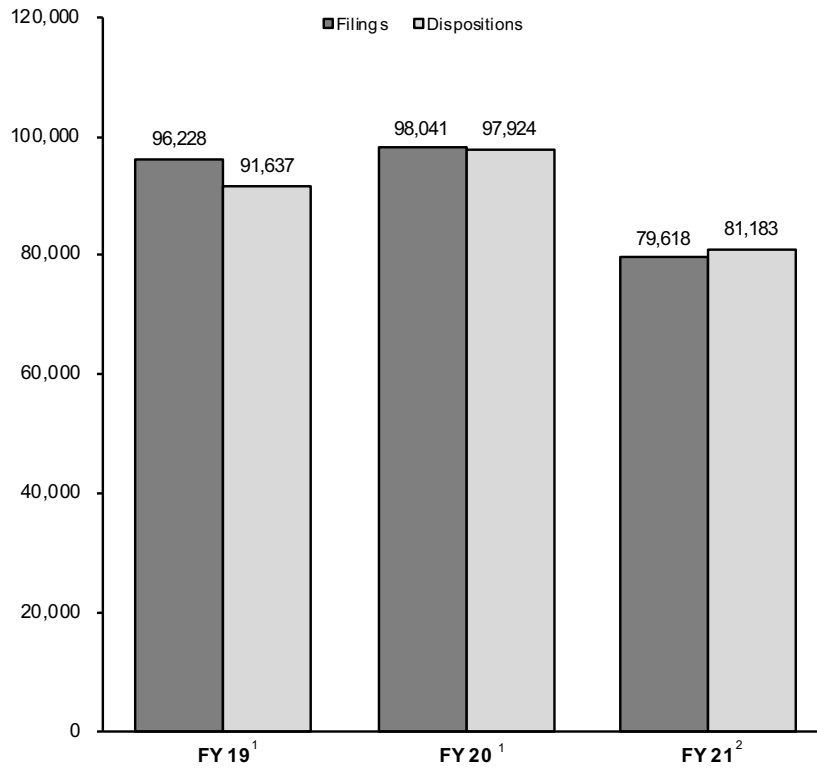
N/S: Numbers 10 or less are not compared statistically.

1. From January 1, 2019 – June 30, 2019 (FY 19), the Anchorage Police Department did not file unpaid citations with the court system for entry of default judgment. The FY20 figures include filings for the eighteen-month period from January 1, 2019 – June 30, 2020. From April 30, 2021 – June 30 2021, electronic reporting of minor offense citations was suspended. The delayed citations will be counted in the FY22 numbers.

2. Kake court closed in October 2018.

3. St. Mary's court closed in 2016. Records for filings from the venue are still maintained separately.

**Figure 5.01. District Court Filing and Disposition Trends
FY 19 – FY 21**



1. From January 1, 2019 – June 30, 2019 (FY19), the Anchorage Police Department did not file unpaid citations with the court system for entry of default judgment. The FY20 figures include filings for the eighteen-month period from January 1, 2019 – June 30, 2020.
2. From April 30, 2021 – June 30 2021, electronic reporting of minor offense citations was suspended. The delayed citations will be counted in the FY22 numbers.

**Table 5.03. District Court Clearance Rates
FY 20 – FY 21**

Court	Non-minor offense filings						Clearance rates	
	Non-minor offense filings		Minor offense filings ¹		Total filings		FY 20	FY 21
	FY 21	Change from FY 20	FY 21	Change from FY 20	FY 21	Change from FY 20		
Anchorage¹	13,803	-24%	14,913	-38%	28,716	-32%	104%	102%
Angeon	9	N/S	0	N/S	9	N/S	65%	N/S
Aniak	58	-60%	9	N/S	67	-61%	82%	130%
Bethel	1,249	-23%	97	-47%	1,346	-26%	89%	113%
Cordova	56	-16%	78	24%	134	3%	108%	95%
Delta Junction	96	-10%	213	-18%	309	-16%	97%	101%
Dillingham	432	-6%	148	-47%	580	-21%	87%	118%
Emmonak	126	-53%	5	N/S	131	-55%	82%	131%
Fairbanks	4,757	-6%	5,069	-21%	9,826	-14%	93%	109%
Fort Yukon	63	13%	11	N/S	74	19%	74%	91%
Galena	55	12%	8	N/S	63	7%	102%	94%
Glennallen	152	11%	283	0%	435	3%	103%	89%
Haines	57	-19%	60	-57%	117	-44%	97%	115%
Homer	638	-3%	695	-33%	1,333	-22%	94%	103%
Hoonah	34	-35%	25	47%	59	-14%	94%	105%
Hooper Bay	139	-35%	2	N/S	141	-37%	85%	126%
Juneau	2,117	-9%	1,842	-12%	3,959	-10%	93%	98%
Kake ²	Served by Petersburg							
Kenai	2,179	-3%	4,608	-9%	6,787	-7%	102%	108%
Ketchikan	1,227	-5%	432	-26%	1,659	-11%	99%	98%
Kodiak	385	-33%	466	-25%	851	-29%	113%	108%
Kotzebue	473	-17%	55	-40%	528	-20%	87%	75%
Naknek	226	-9%	81	9%	307	-4%	95%	86%
Nenana	104	-43%	2,313	-14%	2,417	-16%	104%	98%
Nome	929	13%	376	-4%	1,305	8%	77%	98%
Palmer	4,628	0%	8,494	14%	13,122	9%	101%	95%
Petersburg	200	3%	123	19%	323	8%	105%	93%
Prince of Wales	355	-1%	360	29%	715	12%	99%	98%
Sand Point	37	-48%	6	N/S	43	-61%	71%	130%
Seward	244	-10%	1,091	-27%	1,335	-25%	97%	117%
Sitka	439	-11%	303	-19%	742	-15%	93%	115%
Skagway	19	73%	3	N/S	22	69%	131%	100%
St. Mary's ³	191	2%	1	N/S	192	-1%	74%	95%
St. Paul	14	17%	1	N/S	15	25%	100%	N/S
Tok	150	50%	392	65%	542	60%	93%	109%
Unalakleet	120	69%	34	3%	154	48%	116%	69%
Unalaska	114	-4%	117	-41%	231	-27%	112%	114%
Utqiagvik	546	-21%	61	-21%	607	-21%	89%	90%
Valdez	141	-28%	95	-34%	236	-31%	116%	96%
Wrangell	97	-12%	52	4%	149	-7%	89%	101%
Yakutat	19	-5%	18	-65%	37	-48%	96%	81%
Total	36,678	-15%	42,940	-22%	79,618	-19%	100%	102%
1st District	4,573	-8%	3,218	-13%	7,791	-10%	95%	100%
2nd District	2,068	-4%	526	-12%	2,594	-5%	84%	90%
3rd District	23,049	-17%	31,076	-24%	54,125	-21%	103%	101%
4th District	6,988	-13%	8,120	-17%	15,108	-15%	94%	108%

Clearance rate measures whether a court is keeping up with its incoming caseload. Courts aspire to clear (i.e., dispose of) at least as many cases as have been filed in a period by having a clearance rate of 100 percent or higher.

N/S: Numbers 10 or less are not compared statistically.

1. From January 1, 2019 – June 30, 2019 (FY19), the Anchorage Police Department did not file unpaid citations with the court system for entry of default judgment. The FY20 figures include filings for the eighteen-month period from January 1, 2019 – June 30, 2020. From April 30, 2021 – June 30 2021, electronic reporting of minor offense citations was suspended. The delayed citations will be counted in the FY22 numbers.

2. Kake court closed in October 2018.

3. St. Mary's court closed in 2016. Records for filings from the venue are still maintained separately.

**Table 5.04. District Court Filings by Case Type
FY 21**

Court	Misdemeanor	Minor offense ¹	Civil			Total
			Small claims	Civil protective orders ²	General civil	
Anchorage	6,805	14,913	1,341	2,667	2,990	28,716
Angeon	6	0	0	3	0	9
Aniak	43	9	3	11	1	67
Bethel	985	97	13	208	43	1,346
Cordova	40	78	2	1	13	134
Delta Junction	32	213	9	38	17	309
Dillingham	314	148	5	99	14	580
Emmonak	104	5	4	16	2	131
Fairbanks	2,901	5,069	410	652	794	9,826
Fort Yukon	52	11	3	7	1	74
Galena	24	8	2	24	5	63
Glennallen	121	283	7	14	10	435
Haines	26	60	3	14	14	117
Homer	434	695	26	102	76	1,333
Hoonah	12	25	2	18	2	59
Hooper Bay	105	2	0	34	0	141
Juneau	1,247	1,842	300	376	194	3,959
Kake ³			Served by Petersburg			
Kenai	1,440	4,608	121	358	260	6,787
Ketchikan	805	432	123	180	119	1,659
Kodiak	220	466	16	81	68	851
Kotzebue	329	55	12	106	26	528
Naknek	182	81	3	38	3	307
Nenana	73	2,313	5	9	17	2,417
Nome	693	376	13	194	29	1,305
Palmer	2,251	8,494	843	805	729	13,122
Petersburg	124	123	2	54	20	323
Prince of Wales	254	360	3	80	18	715
Sand Point	33	6	0	1	3	43
Seward	193	1,091	12	21	18	1,335
Sitka	224	303	79	87	49	742
Skagway	8	3	1	7	3	22
St. Mary's ⁴	159	1	1	31	0	192
St. Paul	14	1	0	0	0	15
Tok	116	392	3	25	6	542
Unalakleet	108	34	0	11	1	154
Unalaska	86	117	1	10	17	231
Utqiagvik	304	61	9	207	26	607
Valdez	78	95	13	30	20	236
Wrangell	42	52	26	20	9	149
Yakutat	7	18	6	3	3	37
Total	20,994	42,940	3,422	6,642	5,620	79,618
% of total	26.4	53.9	4.3	8.3	7.1	100.0
1st District	2,755	3,218	545	842	431	7,791
2nd District	1,434	526	34	518	82	2,594
3rd District	12,211	31,076	2,390	4,227	4,221	54,125
4th District	4,594	8,120	453	1,055	886	15,108

1. From April 30, 2021 – June 30 2021, electronic reporting of minor offense citations was suspended. The delayed citations will be counted in the FY22 numbers.

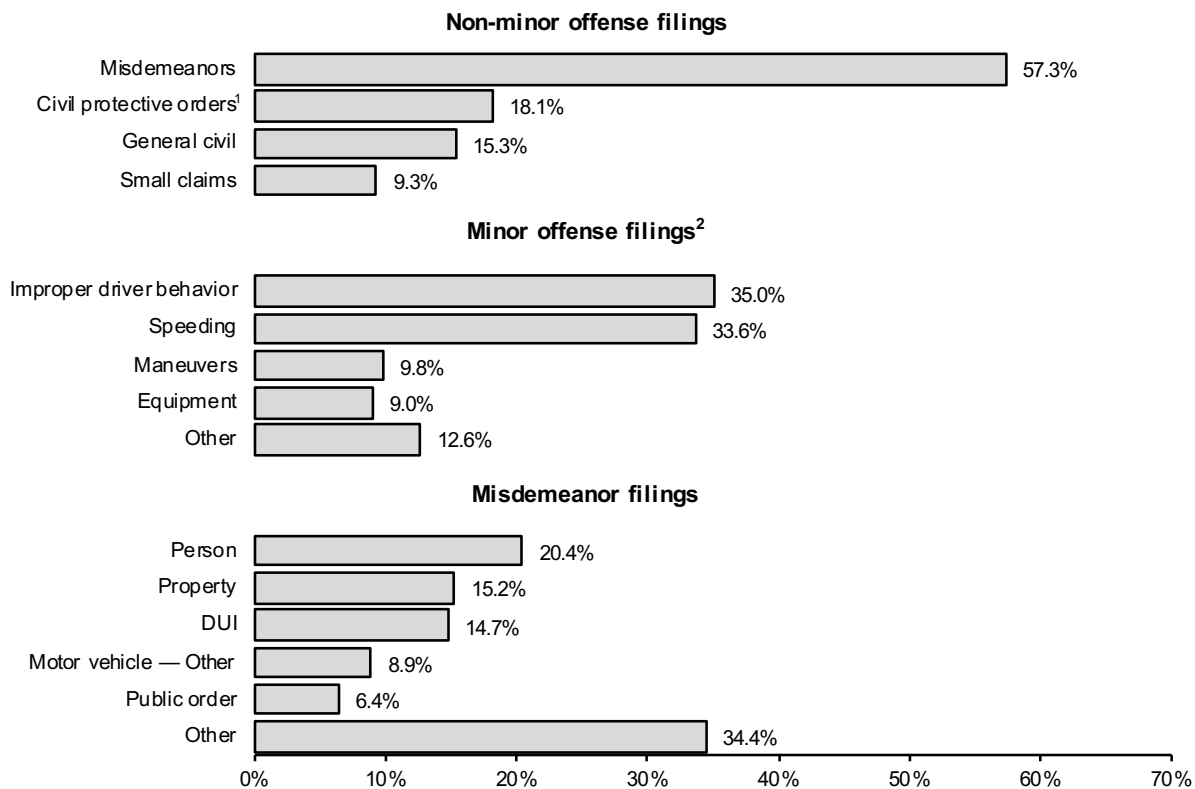
2. The Civil Protective Order case group includes petitions for domestic violence, stalking, and sexual assault protective orders.

3. Kake court closed in October 2018.

4. St. Mary's court closed in 2016. Records for filings from the venue are still maintained separately.

**Figure 5.02. Composition of District Court Case Filings
FY 21**

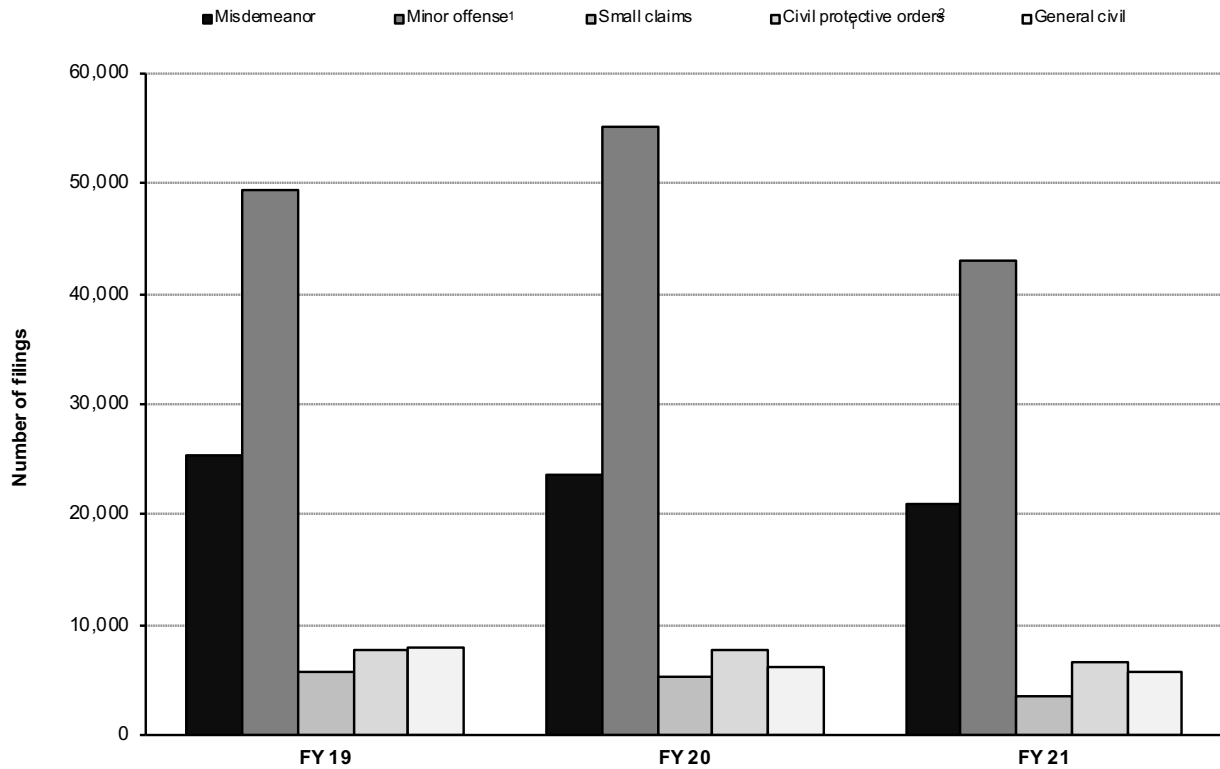
Percentages within categories.



This chart analyzes the composition of cases filed in District Court during FY21. Misdemeanor cases represent approximately 57.3% of the non-minor offense caseload. Approximately 23.9% of all misdemeanor cases involve driving while intoxicated or another criminal traffic violation (for example, driving with suspended license).

1. The Civil Protective Order case group includes petitions for domestic violence, stalking and sexual assault protective orders.
2. From April 30, 2021 – June 30 2021, electronic reporting of minor offense citations was suspended. The delayed citations will be counted in the FY22 numbers.

**Figure 5.03. District Court Filing Trends by Case Type
FY 19 – FY 21**



Filing Type	FY 19	FY 20	FY 21	FY 19 to FY 21 change	FY 20 to FY 21 change
Misdemeanor	25,288	23,591	20,994	-17%	-11%
Minor offense ¹	49,493	55,125	42,940	-13%	-22%
Small claims	5,699	5,303	3,422	-40%	-35%
Civil protective orders ²	7,763	7,768	6,642	-14%	-14%
General civil	7,985	6,254	5,620	-30%	-10%
Total	96,228	98,041	79,618	-17%	-19%

1. From January 1, 2019 – June 30, 2019 (FY19), the Anchorage Police Department did not file unpaid citations with the court system for entry of default judgment. The FY20 figures include filings for the eighteen-month period from January 1, 2019 – June 30, 2020. From April 30, 2021 – June 30 2021, electronic reporting of minor offense citations was suspended. The delayed citations will be counted in the FY22 numbers.

2. The Civil Protective Order case group includes petitions for domestic violence, stalking, and sexual assault protective orders.

**Table 5.05. District Court Dispositions by Case Type
FY 21**

Court	Misdemeanor	Minor offense ¹	Civil			Total
			Small claims	Civil protective orders ²	General civil	
Anchorage¹	5,686	15,526	2,006	2,661	3,343	29,222
Anoon	8	0	0	2	0	10
Aniak	58	11	6	11	1	87
Bethel	1,099	144	27	194	51	1,515
Cordova	41	77	1	0	8	127
Delta Junction	35	226	5	32	13	311
Dillingham	333	238	7	97	12	687
Emmonak	140	6	4	21	0	171
Fairbanks	3,197	5,674	423	652	764	10,710
Fort Yukon	44	12	3	6	2	67
Galena	22	9	1	25	2	59
Glennallen	89	268	9	12	7	385
Haines	40	63	4	14	13	134
Homer	381	779	33	111	72	1,376
Hoonah	19	24	2	16	1	62
Hooper Bay	140	2	0	36	0	178
Juneau	1,216	1,851	263	363	186	3,879
Kake ³			Served by Petersburg			
Kenai	1,456	5,070	158	338	315	7,337
Ketchikan	777	462	100	179	109	1,627
Kodiak	263	500	21	81	55	920
Kotzebue	200	54	18	104	22	398
Naknek	149	69	2	39	5	264
Nenana	95	2,256	5	9	15	2,380
Nome	511	540	25	174	27	1,277
Palmer	1,589	8,737	736	791	550	12,403
Petersburg	113	113	4	51	19	300
Prince of Wales	260	362	5	64	12	703
Sand Point	47	6	0	1	2	56
Seward	247	1,269	13	22	15	1,566
Sitka	260	330	123	85	55	853
Skagway	11	3	1	6	1	22
St. Mary's ⁴	150	1	0	32	0	183
St. Paul	2	0	0	0	0	2
Tok	113	442	3	26	6	590
Unalakleet	72	27	0	8	0	107
Unalaska	121	115	3	7	17	263
Utqiagvik	265	80	18	158	23	544
Valdez	55	116	14	26	16	227
Wrangell	51	55	13	22	10	151
Yakutat	4	16	6	3	1	30
Total	19,359	45,533	4,062	6,479	5,750	81,183
% of total	23.8	56.1	5.0	8.0	7.1	100.0
1st District	2,759	3,279	521	805	407	7,771
2nd District	1,048	701	61	444	72	2,326
3rd District	10,459	32,770	3,003	4,186	4,417	54,835
4th District	5,093	8,783	477	1,044	854	16,251

1. From April 30, 2021 – June 30 2021, electronic reporting of minor offense citations was suspended. The delayed citations will be counted in the FY22 numbers.

2. The Civil Protective Order case group includes petitions for domestic violence, stalking, and sexual assault protective orders.

3. Kake court closed in October 2018.

4. St. Mary's court closed in 2016. Records for filings from the venue are still maintained separately.

**Table 5.06. District Court Non-Minor Offense Case Filings
FY 19 – FY 21**

Court	FY 19	FY 20	FY 21	Change	
				FY 19 to FY 21	FY 20 to FY 21
Anchorage	20,873	18,153	13,803	-34%	-24%
Angoon	12	16	9	N/S	N/S
Aniak	112	144	58	-48%	-60%
Bethel	1,445	1,630	1,249	-14%	-23%
Cordova	84	67	56	-33%	-16%
Delta Junction	105	107	96	-9%	-10%
Dillingham	538	459	432	-20%	-6%
Emmonak	206	269	126	-39%	-53%
Fairbanks	5,429	5,058	4,757	-12%	-6%
Fort Yukon	68	56	63	-7%	13%
Galena	61	49	55	-10%	12%
Glennallen	140	137	152	9%	11%
Haines	64	70	57	-11%	-19%
Homer	612	658	638	4%	-3%
Hoonah	40	52	34	-15%	-35%
Hooper Bay	269	214	139	-48%	-35%
Juneau	2,347	2,332	2,117	-10%	-9%
Kake ¹	7	Served by Petersburg		N/S	N/S
Kenai	2,424	2,243	2,179	-10%	-3%
Ketchikan	1,324	1,288	1,227	-7%	-5%
Kodiak	659	572	385	-42%	-33%
Kotzebue	700	567	473	-32%	-17%
Naknek	171	247	226	32%	-9%
Nenana	124	181	104	-16%	-43%
Nome	894	820	929	4%	13%
Palmer	4,909	4,622	4,628	-6%	0%
Petersburg	156	195	200	28%	3%
Prince of Wales	310	358	355	15%	-1%
Sand Point	83	71	37	-55%	-48%
Seward	290	271	244	-16%	-10%
Sitka	582	496	439	-25%	-11%
Skagway	15	11	19	27%	73%
St. Mary's ²	142	187	191	35%	2%
St. Paul	43	12	14	-67%	17%
Tok	125	100	150	20%	50%
Unalakleet	147	71	120	-18%	69%
Unalaska	172	119	114	-34%	-4%
Utqiagvik	746	689	546	-27%	-21%
Valdez	182	195	141	-23%	-28%
Wrangell	106	110	97	-8%	-12%
Yakutat	19	20	19	0%	-5%
Total	46,735	42,916	36,678	-22%	-15%
1st District	4,982	4,948	4,573	-8%	-8%
2nd District	2,487	2,147	2,068	-17%	-4%
3rd District	31,180	27,826	23,049	-26%	-17%
4th District	8,086	7,995	6,988	-14%	-13%

N/S: Numbers 10 or less are not compared statistically.

1. Kake court closed in October 2018.

2. St. Mary's court closed in 2016. Records for filings from the venue are still maintained separately.

**Table 5.07. District Court Non-Minor Offense Case Dispositions
FY 19 – FY 21**

Court	FY 19	FY 20	FY 21	Change	
				FY 19 to FY 21	FY 20 to FY 21
Anchorage	20,523	17,625	13,696	-33%	-22%
Angoon	10	8	10	N/S	N/S
Aniak	100	116	76	-24%	-34%
Bethel	1,391	1,427	1,371	-1%	-4%
Cordova	75	66	50	-33%	-24%
Delta Junction	109	101	85	-22%	-16%
Dillingham	482	403	449	-7%	11%
Emmonak	180	219	165	-8%	-25%
Fairbanks	4,904	4,993	5,036	3%	1%
Fort Yukon	59	43	55	-7%	28%
Galena	60	51	50	-17%	-2%
Glennallen	123	115	117	-5%	2%
Haines	66	63	71	8%	13%
Homer	559	582	597	7%	3%
Hoonah	36	43	38	6%	-12%
Hooper Bay	258	178	176	-32%	-1%
Juneau	2,118	2,154	2,028	-4%	-6%
Kake ¹	13	Served by Petersburg		N/S	N/S
Kenai	1,942	2,134	2,267	17%	6%
Ketchikan	1,189	1,283	1,165	-2%	-9%
Kodiak	584	562	420	-28%	-25%
Kotzebue	661	497	344	-48%	-31%
Naknek	169	221	195	15%	-12%
Nenana	119	172	124	4%	-28%
Nome	873	674	737	-16%	9%
Palmer	4,322	4,269	3,666	-15%	-14%
Petersburg	123	201	187	52%	-7%
Prince of Wales	317	359	341	8%	-5%
Sand Point	71	48	50	-30%	4%
Seward	257	215	297	16%	38%
Sitka	562	443	523	-7%	18%
Skagway	27	14	19	-30%	36%
St. Mary's ²	127	137	182	43%	33%
St. Paul	35	12	2	N/S	N/S
Tok	133	102	148	11%	45%
Unalakleet	148	103	80	-46%	-22%
Unalaska	150	140	148	-1%	6%
Utqiagvik	681	609	464	-32%	-24%
Valdez	171	194	111	-35%	-43%
Wrangell	102	107	96	-6%	-10%
Yakutat	22	18	14	-36%	-22%
Total	43,851	40,701	35,650	-19%	-12%
1st District	4,585	4,693	4,492	-2%	-4%
2nd District	2,363	1,883	1,625	-31%	-14%
3rd District	29,463	26,586	22,065	-25%	-17%
4th District	7,440	7,539	7,468	0%	-1%

N/S: Numbers 10 or less are not compared statistically.

1. Kake court closed in October 2018.

2. St. Mary's court closed in 2016. Records for filings from the venue are still maintained separately.

**Table 5.08. Misdemeanor Case Filings
FY 19 – FY 21**

Court	FY 19	FY 20	FY 21	Change	
				FY 19 to FY 21	FY 20 to FY 21
Anchorage	9,907	8,088	6,805	-31%	-16%
Angoon	6	14	6	N/S	N/S
Aniak	75	71	43	-43%	-39%
Bethel	1,056	1,345	985	-7%	-27%
Cordova	62	54	40	-35%	-26%
Delta Junction	34	39	32	-6%	-18%
Dillingham	396	344	314	-21%	-9%
Emmonak	160	225	104	-35%	-54%
Fairbanks	2,898	3,102	2,901	0%	-6%
Fort Yukon	42	37	52	24%	41%
Galena	35	26	24	-31%	-8%
Glennallen	96	98	121	26%	23%
Haines	33	36	26	-21%	-28%
Homer	347	406	434	25%	7%
Hoonah	25	37	12	-52%	-68%
Hooper Bay	214	172	105	-51%	-39%
Juneau	1,401	1,410	1,247	-11%	-12%
Kake ¹	5	Served by Petersburg		N/S	N/S
Kenai	1,440	1,445	1,440	0%	0%
Ketchikan	830	806	805	-3%	0%
Kodiak	384	379	220	-43%	-42%
Kotzebue	504	377	329	-35%	-13%
Naknek	144	210	182	26%	-13%
Nenana	83	141	73	-12%	-48%
Nome	631	581	693	10%	19%
Palmer	2,324	2,198	2,251	-3%	2%
Petersburg	109	123	124	14%	1%
Prince of Wales	243	260	254	5%	-2%
Sand Point	76	64	33	-57%	-48%
Seward	188	198	193	3%	-3%
Sitka	380	275	224	-41%	-19%
Skagway	5	4	8	N/S	N/S
St. Mary's ²	108	151	159	47%	5%
St. Paul	30	10	14	-53%	N/S
Tok	73	64	116	59%	81%
Unalakleet	133	60	108	-19%	80%
Unalaska	129	90	86	-33%	-4%
Utqiagvik	473	439	304	-36%	-31%
Valdez	132	132	78	-41%	-41%
Wrangell	69	72	42	-39%	-42%
Yakutat	8	8	7	N/S	N/S
Total	25,288	23,591	20,994	-17%	-11%
1st District	3,114	3,045	2,755	-12%	-10%
2nd District	1,741	1,457	1,434	-18%	-2%
3rd District	15,655	13,716	12,211	-22%	-11%
4th District	4,778	5,373	4,594	-4%	-14%

N/S: Numbers 10 or less are not compared statistically.

1. Kake court closed in October 2018.

2. St. Mary's court closed in 2016. Records for filings from the venue are still maintained separately.

**Table 5.09. Misdemeanor Filings by Case Type
FY 21**

Court	Person	Property	Drugs	Weapon	Public		DUI	Motor vehicle —		Protective order violation	Fish & Game	Other	Total
					order	order		Reckless driving	other				
Anchorage	1,443	1,225	195	86	648	934	14	158	6	10	2,086	6,805	
Anoon	3	0	0	0	0	0	0	0	0	0	3	6	
Aniak	22	5	0	1	3	1	0	0	0	4	7	43	
Bethel	264	61	1	6	83	51	2	11	12	3	491	985	
Cordova	9	4	0	1	3	12	0	3	0	1	7	40	
Delta Junction	6	4	0	0	0	12	0	1	1	3	5	32	
Dillingham	108	33	3	0	17	26	0	1	9	52	65	314	
Emmonak	53	8	0	0	6	9	2	1	1	0	24	104	
Fairbanks	446	385	58	27	54	438	12	205	37	16	1,223	2,901	
Fort Yukon	23	6	0	0	2	7	0	0	0	2	12	52	
Galena	8	4	1	0	0	5	0	0	0	0	6	24	
Glennallen	29	3	0	0	1	21	0	17	2	20	28	121	
Haines	4	1	0	1	0	6	1	3	0	2	8	26	
Homer	56	67	12	1	13	94	5	98	11	1	76	434	
Hoonah	3	4	0	0	0	1	0	2	0	0	2	12	
Hooper Bay	51	8	0	1	8	24	2	0	2	0	9	105	
Juneau	188	310	10	7	143	147	6	211	1	14	210	1,247	
Kake ¹													
						Served by Petersburg							
Kenai	177	139	73	13	34	353	7	368	35	14	227	1,440	
Ketchikan	100	74	28	1	44	61	2	74	25	3	393	805	
Kodiak	47	27	6	1	5	55	0	25	5	18	31	220	
Kotzebue	154	46	4	2	41	17	1	10	11	2	41	329	
Naknek	35	14	0	0	4	6	0	12	3	91	17	182	
Nenana	13	4	1	1	2	17	0	13	2	4	16	73	
Nome	197	130	2	3	110	35	0	2	8	0	206	693	
Palmer	416	456	96	14	49	430	10	529	66	14	171	2,251	
Petersburg	14	15	4	0	6	22	0	10	10	6	37	124	
Prince of Wales	47	18	8	4	6	27	0	33	5	11	95	254	
Sand Point	9	4	1	1	0	7	0	3	0	7	1	33	
Seward	26	22	8	0	16	69	0	22	1	7	22	193	
Sitka	34	23	5	1	10	41	2	20	6	20	62	224	
Skagway	2	0	0	0	0	2	1	0	1	1	1	8	
St. Mary's ²	65	10	0	1	5	56	0	1	1	0	20	159	
St. Paul	10	1	0	0	1	2	0	0	0	0	0	14	
Tok	26	19	1	0	6	11	0	13	3	1	36	116	
Unalakleet	56	6	1	1	7	11	0	0	0	0	26	108	
Unalaska	14	20	2	0	4	18	0	7	0	11	10	86	
Utqiagvik	100	24	3	3	18	31	0	2	11	5	107	304	
Valdez	13	6	3	1	1	21	1	11	2	1	18	78	
Wrangell	5	6	0	1	0	6	1	8	2	4	9	42	
Yakutat	3	0	0	0	0	1	0	0	0	2	1	7	
Total	4,279	3,192	526	179	1,350	3,087	69	1,874	279	350	5,809	20,994	
% of total	20.4	15.2	2.5	0.9	6.4	14.7	0.3	8.9	1.3	1.7	27.7	100.0	
1st District	403	451	55	15	209	314	13	361	50	63	821	2,755	
2nd District	507	206	10	9	176	94	1	14	30	7	380	1,434	
3rd District	2,392	2,021	399	118	796	2,048	37	1,254	140	247	2,759	12,211	
4th District	977	514	62	37	169	631	18	245	59	33	1,849	4,594	

1. Kake court closed in October 2018.

2. St. Mary's court closed in 2016. Records for filings from the venue are still maintained separately.

**Table 5.10. Criminal Case Types
FY 21**

Person	Public Order
Homicide	Riot
Assault	Disorderly Conduct
Reckless Endangerment	Harassment
Kidnapping	Indecent Viewing or Photography
Custodial Interference	Possess or Distribute Child Pornography
Human Trafficking	Cruelty to Animals
Sex Offenses	Recruiting Gang Members
Robbery	Gambling
Extortion	Alcohol Licensing Laws
Coercion	
	Motor Vehicle DUI
Property	Motor Vehicle Reckless Driving
Theft	
Burglary	Motor Vehicle Other
Criminal Trespass	
Vehicle Theft	Protection Order Violation
Arson	
Criminal Mischief	Fish and Game
Business and Commercial Offenses	
	Other
Drugs	Offenses against Public Administration
Misconduct Involving a Controlled Substance	Offenses against Family and
Manufacture, Delivery or Possession of	Vulnerable Adults
Imitation Controlled Substance	All other offenses, including cases in which
	a charging document was never filed
Weapons	
Misconduct Involving Weapons	
Criminal Possession of Explosives	
Unlawful Furnishing of Explosives	

Criminal cases typically contain multiple charges. The Alaska Court System categorizes cases for reporting purposes based on the most serious charge.

In FY07 the Alaska Court System changed the way it categorizes criminal cases for annual reporting. The categories now conform to the National Center for State Courts' national model for caseload statistical reporting. This change is intended to make Alaska statistics easier to compile, understand, and compare to those of other jurisdictions.

**Table 5.11. Misdemeanor Case Dispositions
FY 19 – FY 21**

Court	FY 19	FY 20	FY 21	Change	
				FY 19 to FY 21	FY 20 to FY 21
Anchorage	9,651	7,257	5,686	-41%	-22%
Angoon	4	6	8	N/S	N/S
Aniak	60	51	58	-3%	14%
Bethel	1,006	1,146	1,099	9%	-4%
Cordova	52	51	41	-21%	-20%
Delta Junction	34	27	35	3%	30%
Dillingham	345	284	333	-3%	17%
Emmonak	137	183	140	2%	-23%
Fairbanks	2,659	2,912	3,197	20%	10%
Fort Yukon	39	24	44	13%	83%
Galena	39	29	22	-44%	-24%
Glennallen	86	70	89	3%	27%
Haines	31	28	40	29%	43%
Homer	313	324	381	22%	18%
Hoonah	25	26	19	-24%	-27%
Hooper Bay	205	131	140	-32%	7%
Juneau	1,179	1,257	1,216	3%	-3%
Kake ¹	10	Served by Petersburg		N/S	N/S
Kenai	1,126	1,342	1,456	29%	8%
Ketchikan	706	810	777	10%	-4%
Kodiak	330	368	263	-20%	-29%
Kotzebue	472	310	200	-58%	-35%
Naknek	137	185	149	9%	-19%
Nenana	89	125	95	7%	-24%
Nome	607	455	511	-16%	12%
Palmer	1,925	1,890	1,589	-17%	-16%
Petersburg	78	130	113	45%	-13%
Prince of Wales	248	259	260	5%	0%
Sand Point	64	43	47	-27%	9%
Seward	158	130	247	56%	90%
Sitka	371	254	260	-30%	2%
Skagway	15	5	11	-27%	N/S
St. Mary's ²	93	103	150	61%	46%
St. Paul	25	9	2	N/S	N/S
Tok	83	57	113	36%	98%
Unalakleet	131	80	72	-45%	-10%
Unalaska	118	107	121	3%	13%
Utqiagvik	434	383	265	-39%	-31%
Valdez	135	128	55	-59%	-57%
Wrangell	59	74	51	-14%	-31%
Yakutat	10	6	4	N/S	N/S
Total	23,289	21,059	19,359	-17%	-8%
1st District	2,736	2,855	2,759	1%	-3%
2nd District	1,644	1,228	1,048	-36%	-15%
3rd District	14,465	12,188	10,459	-28%	-14%
4th District	4,444	4,788	5,093	15%	6%

N/S: Numbers 10 or less are not compared statistically.

1. Kake court closed in October 2018.

2. St. Mary's court closed in 2016. Records for filings from the venue are still maintained separately.

**Table 5.12. Misdemeanor Case Dispositions by Manner of Disposition
FY 21**

	Non-trial			Trial		Total
	Case dismissed	Guilty plea	Other	Guilty	Not guilty	
Anchorage	2,922	2,761	1	1	1	5,686
Angoon	2	6	0	0	0	8
Aniak	38	20	0	0	0	58
Bethel	707	385	0	4	3	1,099
Cordova	15	24	1	1	0	41
Delta Junction	12	23	0	0	0	35
Dillingham	165	164	0	4	0	333
Emmonak	87	53	0	0	0	140
Fairbanks	2,248	942	3	2	2	3,197
Fort Yukon	28	16	0	0	0	44
Galena	13	9	0	0	0	22
Glennallen	35	54	0	0	0	89
Haines	17	22	1	0	0	40
Homer	214	163	0	3	1	381
Hoonah	13	6	0	0	0	19
Hooper Bay	104	35	0	0	1	140
Juneau	748	463	3	0	2	1,216
Kake ¹				Served by Petersburg		
Kenai	704	746	0	4	2	1,456
Ketchikan	476	297	2	2	0	777
Kodiak	74	185	0	3	1	263
Kotzebue	81	119	0	0	0	200
Naknek	31	115	1	2	0	149
Nenana	66	29	0	0	0	95
Nome	346	165	0	0	0	511
Palmer	733	851	0	4	1	1,589
Petersburg	35	77	1	0	0	113
Prince of Wales	190	69	0	1	0	260
Sand Point	26	21	0	0	0	47
Seward	107	139	1	0	0	247
Sitka	78	182	0	0	0	260
Skagway	6	5	0	0	0	11
St. Mary's ²	85	65	0	0	0	150
St. Paul	2	0	0	0	0	2
Tok	84	28	0	0	1	113
Unalakleet	44	28	0	0	0	72
Unalaska	86	35	0	0	0	121
Utqiagvik	120	144	0	1	0	265
Valdez	19	36	0	0	0	55
Wrangell	32	19	0	0	0	51
Yakutat	3	1	0	0	0	4
Total	10,796	8,502	14	32	15	19,359
% of total	55.8	43.9	0.1	0.1	0.1	100.0
1st District	1,600	1,147	7	3	2	2,759
2nd District	591	456	0	1	0	1,048
3rd District	5,133	5,294	4	22	6	10,459
4th District	3,472	1,605	3	6	7	5,093

Note: Due to the covid pandemic, jury trials were suspended for various periods at various locations throughout FY21.

1. Kake court closed in October 2018.

2. St. Mary's court closed in 2016. Records for filings from the venue are still maintained separately.

Table 5.13. Felony Filings in District Court¹
FY 19 – FY 21

Court	FY 19	FY 20	FY 21	Change	
				FY 19 to FY 21	FY 20 to FY 21
Anchorage	3,254	3,258	2,986	-8%	-8%
Anagoon	1	1	0	N/S	N/S
Aniak	37	45	27	-27%	-40%
Bethel	183	221	228	25%	3%
Cordova	9	5	16	N/S	N/S
Delta Junction	6	17	10	N/S	N/S
Dillingham	107	128	112	5%	-12%
Emmonak	49	63	46	-6%	-27%
Fairbanks	537	606	640	19%	6%
Fort Yukon	16	22	18	13%	-18%
Galena	16	13	8	N/S	N/S
Glennallen	18	16	20	11%	25%
Haines	6	4	7	N/S	N/S
Homer	97	114	108	11%	-5%
Hoonah	0	4	1	N/S	N/S
Hooper Bay	23	32	33	43%	3%
Juneau	149	186	153	3%	-18%
Kake ²	0	Served by Petersburg		N/S	N/S
Kenai	429	451	394	-8%	-13%
Ketchikan	124	106	115	-7%	8%
Kodiak	100	104	72	-28%	-31%
Kotzebue	234	169	179	-24%	6%
Naknek	37	36	33	-11%	-8%
Nenana	33	30	25	-24%	-17%
Nome	118	148	153	30%	3%
Palmer	427	509	604	41%	19%
Petersburg	20	15	16	-20%	7%
Prince of Wales	45	50	42	-7%	-16%
Sand Point	16	19	9	N/S	N/S
Seward	58	72	54	-7%	-25%
Sitka	42	41	30	-29%	-27%
Skagway	0	1	0	N/S	N/S
St. Mary's ³	25	63	52	108%	-17%
St. Paul	8	7	6	N/S	N/S
Tok	20	28	29	45%	4%
Unalakleet	73	66	60	-18%	-9%
Unalaska	28	16	12	-57%	-25%
Utqiagvik	78	73	61	-22%	-16%
Valdez	10	24	14	N/S	-42%
Wrangell	14	9	13	-7%	N/S
Yakutat	3	1	1	N/S	N/S
Total	6,450	6,773	6,387	-1%	-6%
1st District	404	418	378	-6%	-10%
2nd District	503	456	453	-10%	-1%
3rd District	4,598	4,759	4,440	-3%	-7%
4th District	945	1,140	1,116	18%	-2%

N/S: Numbers 10 or less are not compared statistically.

1. This chart is for information purposes only. The totals are not included in the District Court totals.

Felony cases are reported as Superior Court cases, regardless of where the case was initiated.

2. Kake court closed in October 2018.

3. St. Mary's court closed in 2016. Records for filings from the venue are still maintained separately.

**Table 5.14. Post-judgment Filings:
Misdemeanor Petitions to Revoke Probation
FY 19 – FY 21**

Court	FY 19	FY 20	FY 21	Change	
				FY 19 to FY 21	FY 20 to FY 21
Anchorage	616	320	541	-12%	69%
Angoon	1	0	0	N/S	N/S
Aniak	3	1	0	N/S	N/S
Bethel	30	48	58	93%	21%
Cordova	2	3	1	N/S	N/S
Delta Junction	1	2	0	N/S	N/S
Dillingham	7	13	11	N/S	-15%
Emmonak	6	5	14	N/S	N/S
Fairbanks	217	205	159	-27%	-22%
Fort Yukon	0	0	1	N/S	N/S
Galena	1	0	0	N/S	N/S
Glennallen	4	6	4	N/S	N/S
Haines	0	0	0	N/S	N/S
Homer	25	15	19	-24%	27%
Hoonah	0	1	0	N/S	N/S
Hooper Bay	0	4	6	N/S	N/S
Juneau	158	93	142	-10%	53%
Kake ¹	0	Served by Petersburg		N/S	N/S
Kenai	190	126	102	-46%	-19%
Ketchikan	46	85	50	9%	-41%
Kodiak	23	47	23	0%	-51%
Kotzebue	88	43	13	-85%	-70%
Naknek	0	3	1	N/S	N/S
Nenana	5	4	2	N/S	N/S
Nome	45	44	21	-53%	-52%
Palmer	105	120	78	-26%	-35%
Petersburg	6	3	6	N/S	N/S
Prince of Wales	12	6	3	N/S	N/S
Sand Point	3	2	0	N/S	N/S
Seward	27	10	12	-56%	N/S
Sitka	16	10	8	N/S	N/S
Skagway	0	0	0	N/S	N/S
St. Mary's ²	6	8	8	N/S	N/S
St. Paul	0	0	1	N/S	N/S
Tok	3	5	2	N/S	N/S
Unalakleet	3	0	0	N/S	N/S
Unalaska	1	10	0	N/S	N/S
Utqiagvik	24	10	7	N/S	N/S
Valdez	4	9	2	N/S	N/S
Wrangell	6	1	4	N/S	N/S
Yakutat	0	0	1	N/S	N/S
Total	1,684	1,262	1,300	-23%	3%
1st District	245	199	214	-13%	8%
2nd District	160	97	41	-74%	-58%
3rd District	1,007	684	795	-21%	16%
4th District	272	282	250	-8%	-11%

N/S: Numbers 10 or less are not compared statistically.

1. Kake court closed in October 2018.

2. St. Mary's court closed in 2016. Records for filings from the venue are still maintained separately.

**Table 5.15. Small Claims Case Filings
FY 19 – FY 21**

Court	FY 19	FY 20	FY 21	Change	
				FY 19 to FY 21	FY 20 to FY 21
Anchorage	3,249	3,092	1,341	-59%	-57%
Angoon	0	1	0	N/S	N/S
Aniak	3	34	3	N/S	N/S
Bethel	26	21	13	-50%	-38%
Cordova	2	1	2	N/S	N/S
Delta Junction	11	9	9	N/S	N/S
Dillingham	16	6	5	N/S	N/S
Emmonak	2	2	4	N/S	N/S
Fairbanks	666	482	410	-38%	-15%
Fort Yukon	5	2	3	N/S	N/S
Galena	6	5	2	N/S	N/S
Glennallen	12	7	7	N/S	N/S
Haines	6	5	3	N/S	N/S
Homer	43	49	26	-40%	-47%
Hoonah	4	2	2	N/S	N/S
Hooper Bay	2	1	0	N/S	N/S
Juneau	247	243	300	21%	23%
Kake ¹	0	Served by Petersburg		N/S	N/S
Kenai	230	179	121	-47%	-32%
Ketchikan	91	111	123	35%	11%
Kodiak	45	37	16	-64%	-57%
Kotzebue	19	20	12	-37%	-40%
Naknek	4	1	3	N/S	N/S
Nenana	8	11	5	N/S	N/S
Nome	27	21	13	-52%	-38%
Palmer	797	801	843	6%	5%
Petersburg	7	10	2	N/S	N/S
Prince of Wales	10	7	3	N/S	N/S
Sand Point	1	1	0	N/S	N/S
Seward	25	8	12	-52%	N/S
Sitka	35	89	79	126%	-11%
Skagway	2	1	1	N/S	N/S
St. Mary's ²	2	0	1	N/S	N/S
St. Paul	0	0	0	N/S	N/S
Tok	17	5	3	N/S	N/S
Unalakleet	2	1	0	N/S	N/S
Unalaska	3	5	1	N/S	N/S
Utqiagvik	49	11	9	N/S	N/S
Valdez	9	13	13	N/S	0%
Wrangell	9	6	26	N/S	N/S
Yakutat	7	3	6	N/S	N/S
Total	5,699	5,303	3,422	-40%	-35%
1st District	418	478	545	30%	14%
2nd District	97	53	34	-65%	-36%
3rd District	4,436	4,200	2,390	-46%	-43%
4th District	748	572	453	-39%	-21%

N/S: Numbers 10 or less are not compared statistically.

1. Kake court closed in October 2018.

2. St. Mary's court closed in 2016. Records for filings from the venue are still maintained separately.

**Table 5.16. Small Claims Case Dispositions
FY 19 – FY 21**

Court	FY 19	FY 20	FY 21	Change	
				FY 19 to FY 21	FY 20 to FY 21
Anchorage	3,372	3,106	2,006	-41%	-35%
Angoon	1	0	0	N/S	N/S
Aniak	3	28	6	N/S	N/S
Bethel	34	12	27	-21%	125%
Cordova	3	2	1	N/S	N/S
Delta Junction	13	12	5	N/S	N/S
Dillingham	16	9	7	N/S	N/S
Emmonak	4	1	4	N/S	N/S
Fairbanks	572	489	423	-26%	-13%
Fort Yukon	0	0	3	N/S	N/S
Galena	5	3	1	N/S	N/S
Glennallen	6	10	9	N/S	N/S
Haines	6	8	4	N/S	N/S
Homer	47	44	33	-30%	-25%
Hoonah	3	3	2	N/S	N/S
Hooper Bay	4	2	0	N/S	N/S
Juneau	303	241	263	-13%	9%
Kake ¹	0	Served by Petersburg		N/S	N/S
Kenai	160	195	158	-1%	-19%
Ketchikan	96	92	100	4%	9%
Kodiak	45	39	21	-53%	-46%
Kotzebue	14	19	18	29%	-5%
Naknek	4	2	2	N/S	N/S
Nenana	6	12	5	N/S	N/S
Nome	38	7	25	-34%	N/S
Palmer	712	704	736	3%	5%
Petersburg	9	9	4	N/S	N/S
Prince of Wales	9	10	5	N/S	N/S
Sand Point	1	1	0	N/S	N/S
Seward	24	13	13	-46%	0%
Sitka	29	47	123	324%	162%
Skagway	2	0	1	N/S	N/S
St. Mary's ²	1	2	0	N/S	N/S
St. Paul	0	0	0	N/S	N/S
Tok	15	11	3	N/S	N/S
Unalakleet	3	16	0	N/S	N/S
Unalaska	2	4	3	N/S	N/S
Utqiagvik	44	12	18	-59%	50%
Valdez	6	11	14	N/S	27%
Wrangell	7	6	13	N/S	N/S
Yakutat	6	3	6	N/S	N/S
Total	5,625	5,185	4,062	-28%	-22%
1st District	471	419	521	11%	24%
2nd District	99	54	61	-38%	13%
3rd District	4,398	4,140	3,003	-32%	-27%
4th District	657	572	477	-27%	-17%

N/S: Numbers 10 or less are not compared statistically.

1. Kake court closed in October 2018.

2. St. Mary's court closed in 2016. Records for filings from the venue are still maintained separately.

**Table 5.17. Small Claims Case Dispositions by Manner of Disposition
FY 21**

Court	Stage of disposition					Total
	Dismiss	Default judgment	Judgment on the pleadings	Trial	Other	
Anchorage	1,225	516	92	40	133	2,006
Anoon	0	0	0	0	0	0
Aniak	2	4	0	0	0	6
Bethel	21	2	2	2	0	27
Cordova	1	0	0	0	0	1
Delta Junction	0	3	0	2	0	5
Dillingham	5	2	0	0	0	7
Emmonak	0	3	1	0	0	4
Fairbanks	273	129	5	12	4	423
Fort Yukon	0	3	0	0	0	3
Galena	0	1	0	0	0	1
Glennallen	5	3	0	0	1	9
Haines	1	0	1	2	0	4
Homer	17	11	0	3	2	33
Hoonah	1	0	1	0	0	2
Hooper Bay	0	0	0	0	0	0
Juneau	131	106	14	7	5	263
Kake ¹						
			Served by Petersburg			
Kenai	86	49	5	12	6	158
Ketchikan	35	45	5	11	4	100
Kodiak	11	6	3	1	0	21
Kotzebue	14	2	0	2	0	18
Naknek	1	1	0	0	0	2
Nenana	4	0	1	0	0	5
Nome	14	7	4	0	0	25
Palmer	296	290	70	57	23	736
Petersburg	3	1	0	0	0	4
Prince of Wales	2	1	2	0	0	5
Sand Point	0	0	0	0	0	0
Seward	8	3	2	0	0	13
Sitka	67	42	9	3	2	123
Skagway	1	0	0	0	0	1
St. Mary's ²	0	0	0	0	0	0
St. Paul	0	0	0	0	0	0
Tok	0	1	0	2	0	3
Unalakleet	0	0	0	0	0	0
Unalaska	2	0	0	0	1	3
Utqiagvik	16	2	0	0	0	18
Valdez	0	4	2	7	1	14
Wrangell	3	5	3	2	0	13
Yakutat	1	5	0	0	0	6
Total	2,246	1,247	222	165	182	4,062
% of total	55.3	30.7	5.5	4.0	4.5	100.0
1st District	245	205	35	25	11	521
2nd District	44	11	4	2	0	61
3rd District	1,657	885	174	120	167	3,003
4th District	300	146	9	18	4	477

1. Kake court closed in October 2018.

2. St. Mary's court closed in 2016. Records for filings from the venue are still maintained separately.

**Table 5.18. Civil Protective Order¹ Case Filings
FY 19 – FY 21**

Court	FY 19	FY 20	FY 21	Change	
				FY 19 to FY 21	FY 20 to FY 21
Anchorage	3,201	3,239	2,667	-17%	-18%
Angoon	3	1	3	N/S	N/S
Aniak	31	36	11	-65%	-69%
Bethel	302	224	208	-31%	-7%
Cordova	9	5	1	N/S	N/S
Delta Junction	42	50	38	-10%	-24%
Dillingham	104	98	99	-5%	1%
Emmonak	41	40	16	-61%	-60%
Fairbanks	786	760	652	-17%	-14%
Fort Yukon	18	16	7	N/S	N/S
Galena	17	17	24	41%	41%
Glennallen	24	24	14	-42%	-42%
Haines	18	23	14	-22%	-39%
Homer	126	136	102	-19%	-25%
Hoonah	7	12	18	N/S	50%
Hooper Bay	52	41	34	-35%	-17%
Juneau	415	437	376	-9%	-14%
Kake ²	1	Served by Petersburg		N/S	N/S
Kenai	426	378	358	-16%	-5%
Ketchikan	229	240	180	-21%	-25%
Kodiak	143	95	81	-43%	-15%
Kotzebue	149	145	106	-29%	-27%
Naknek	17	25	38	124%	52%
Nenana	17	15	9	N/S	N/S
Nome	196	193	194	-1%	1%
Palmer	843	911	805	-5%	-12%
Petersburg	28	44	54	93%	23%
Prince of Wales	45	77	80	78%	4%
Sand Point	4	2	1	N/S	N/S
Seward	44	39	21	-52%	-46%
Sitka	94	80	87	-7%	9%
Skagway	4	4	7	N/S	N/S
St. Mary's ³	32	36	31	-3%	-14%
St. Paul	11	2	0	N/S	N/S
Tok	29	22	25	-14%	14%
Unalakleet	11	9	11	0%	N/S
Unalaska	18	12	10	N/S	N/S
Utqiagvik	186	209	207	11%	-1%
Valdez	21	44	30	43%	-32%
Wrangell	16	19	20	25%	5%
Yakutat	3	8	3	N/S	N/S
Total	7,763	7,768	6,642	-14%	-14%
1st District	863	945	842	-2%	-11%
2nd District	542	556	518	-4%	-7%
3rd District	4,991	5,010	4,227	-15%	-16%
4th District	1,367	1,257	1,055	-23%	-16%

N/S: Numbers 10 or less are not compared statistically.

1. The Civil Protective Order case group includes petitions for domestic violence, stalking, and sexual assault protective orders.

2. Kake court closed in October 2018.

3. St. Mary's court closed in 2016. Records for filings from the venue are still maintained separately.

**Table 5.19. Civil Protective Order¹ Case Dispositions
FY 19 – FY 21**

Court	FY 19	FY 20	FY 21	Change	
				FY 19 to FY 21	FY 20 to FY 21
Anchorage	3,077	3,178	2,661	-14%	-16%
Angeon	3	1	2	N/S	N/S
Aniak	32	35	11	-66%	-69%
Bethel	297	216	194	-35%	-10%
Cordova	10	6	0	N/S	N/S
Delta Junction	43	51	32	-26%	-37%
Dillingham	98	97	97	-1%	0%
Emmonak	37	32	21	-43%	-34%
Fairbanks	761	750	652	-14%	-13%
Fort Yukon	15	17	6	N/S	N/S
Galena	16	16	25	56%	56%
Glennallen	25	25	12	-52%	-52%
Haines	18	22	14	-22%	-36%
Homer	131	130	111	-15%	-15%
Hoonah	7	10	16	N/S	N/S
Hooper Bay	48	45	36	-25%	-20%
Juneau	383	440	363	-5%	-17%
Kake ²	1	Served by Petersburg		N/S	N/S
Kenai	395	378	338	-14%	-11%
Ketchikan	228	242	179	-21%	-26%
Kodiak	134	95	81	-40%	-15%
Kotzebue	143	146	104	-27%	-29%
Naknek	20	22	39	95%	77%
Nenana	17	15	9	N/S	N/S
Nome	195	187	174	-11%	-7%
Palmer	843	901	791	-6%	-12%
Petersburg	28	43	51	82%	19%
Prince of Wales	42	78	64	52%	-18%
Sand Point	4	1	1	N/S	N/S
Seward	39	40	22	-44%	-45%
Sitka	91	81	85	-7%	5%
Skagway	5	4	6	N/S	N/S
St. Mary's ³	33	32	32	-3%	0%
St. Paul	10	1	0	N/S	N/S
Tok	29	21	26	-10%	24%
Unalakleet	11	7	8	N/S	N/S
Unalaska	18	12	7	N/S	N/S
Utqiagvik	177	185	158	-11%	-15%
Valdez	23	44	26	13%	-41%
Wrangell	14	19	22	57%	16%
Yakutat	4	8	3	N/S	N/S
Total	7,505	7,633	6,479	-14%	-15%
1st District	824	948	805	-2%	-15%
2nd District	526	525	444	-16%	-15%
3rd District	4,827	4,930	4,186	-13%	-15%
4th District	1,328	1,230	1,044	-21%	-15%

N/S: Numbers 10 or less are not compared statistically.

1. The Civil Protective Order case group includes petitions for domestic violence, stalking, and sexual assault protective orders.

2. Kake court closed in October 2018.

3. St. Mary's court closed in 2016. Records for filings from the venue are still maintained separately.

**Table 5.20. District Court General Civil Case Filings
FY 19 – FY 21**

Court	FY 19	FY 20	FY 21	Change	
				FY 19 to FY 21	FY 20 to FY 21
Anchorage	4,516	3,734	2,990	-34%	-20%
Angoon	3	0	0	N/S	N/S
Aniak	3	3	1	N/S	N/S
Bethel	61	40	43	-30%	8%
Cordova	11	7	13	18%	N/S
Delta Junction	18	9	17	-6%	N/S
Dillingham	22	11	14	-36%	27%
Emmonak	3	2	2	N/S	N/S
Fairbanks	1,079	714	794	-26%	11%
Fort Yukon	3	1	1	N/S	N/S
Galena	3	1	5	N/S	N/S
Glennallen	8	8	10	N/S	N/S
Haines	7	6	14	N/S	N/S
Homer	96	67	76	-21%	13%
Hoonah	4	1	2	N/S	N/S
Hooper Bay	1	0	0	N/S	N/S
Juneau	284	242	194	-32%	-20%
Kake ¹	1	Served by Petersburg		N/S	N/S
Kenai	328	241	260	-21%	8%
Ketchikan	174	131	119	-32%	-9%
Kodiak	87	61	68	-22%	11%
Kotzebue	28	25	26	-7%	4%
Naknek	6	11	3	N/S	N/S
Nenana	16	14	17	6%	21%
Nome	40	25	29	-27%	16%
Palmer	945	712	729	-23%	2%
Petersburg	12	18	20	67%	11%
Prince of Wales	12	14	18	50%	29%
Sand Point	2	4	3	N/S	N/S
Seward	33	26	18	-45%	-31%
Sitka	73	52	49	-33%	-6%
Skagway	4	2	3	N/S	N/S
St. Mary's ²	0	0	0	N/S	N/S
St. Paul	2	0	0	N/S	N/S
Tok	6	9	6	N/S	N/S
Unalakleet	1	1	1	N/S	N/S
Unalaska	22	12	17	-23%	42%
Utqiagvik	38	30	26	-32%	-13%
Valdez	20	6	20	0%	N/S
Wrangell	12	13	9	N/S	N/S
Yakutat	1	1	3	N/S	N/S
Total	7,985	6,254	5,620	-30%	-10%
1st District	587	480	431	-27%	-10%
2nd District	107	81	82	-23%	1%
3rd District	6,098	4,900	4,221	-31%	-14%
4th District	1,193	793	886	-26%	12%

N/S: Numbers 10 or less are not compared statistically.

1. Kake court closed in October 2018.

2. St. Mary's court closed in 2016. Records for filings from the venue are still maintained separately.

**Table 5.21. District Court General Civil Filings by Case Type
FY 21**

Court	Eviction/ real property	Debt/ contract	Post- conviction relief	Other	Total
Anchorage	993	1,675	5	317	2,990
Angoon	0	0	0	0	0
Aniak	0	1	0	0	1
Bethel	5	36	0	2	43
Cordova	1	12	0	0	13
Delta Junction	5	11	0	1	17
Dillingham	1	12	0	1	14
Emmonak	0	2	0	0	2
Fairbanks	176	382	1	235	794
Fort Yukon	0	1	0	0	1
Galena	0	5	0	0	5
Glennallen	0	9	0	1	10
Haines	2	10	0	2	14
Homer	11	61	0	4	76
Hoonah	0	2	0	0	2
Hooper Bay	0	0	0	0	0
Juneau	47	131	0	16	194
Kake ¹			Served by Petersburg		
Kenai	45	190	1	24	260
Ketchikan	38	75	1	5	119
Kodiak	7	57	1	3	68
Kotzebue	2	21	0	3	26
Naknek	0	3	0	0	3
Nenana	1	15	0	1	17
Nome	11	18	0	0	29
Palmer	124	535	0	70	729
Petersburg	8	11	0	1	20
Prince of Wales	5	12	1	0	18
Sand Point	0	3	0	0	3
Seward	6	12	0	0	18
Sitka	9	38	0	2	49
Skagway	0	3	0	0	3
St. Mary's ²	0	0	0	0	0
St. Paul	0	0	0	0	0
Tok	0	6	0	0	6
Unalakleet	0	1	0	0	1
Unalaska	0	16	0	1	17
Utqiagvik	3	20	0	3	26
Valdez	6	11	0	3	20
Wrangell	3	6	0	0	9
Yakutat	0	3	0	0	3
Total	1,509	3,406	10	695	5,620
% of total	26.8	60.6	0.2	12.4	100.0
1st District	112	291	2	26	431
2nd District	16	60	0	6	82
3rd District	1,194	2,596	7	424	4,221
4th District	187	459	1	239	886

1. Kake court closed in October 2018.

2. St. Mary's court closed in 2016. Records for filings from the venue are still maintained separately.

**Table 5.22. District Court General Civil Case Dispositions
FY 19 – FY 21**

Court	FY 19	FY 20	FY 21	Change	
				FY 19 to FY 21	FY 20 to FY 21
Anchorage	4,423	4,084	3,343	-24%	-18%
Angoon	2	1	0	N/S	N/S
Aniak	5	2	1	N/S	N/S
Bethel	54	53	51	-6%	-4%
Cordova	10	7	8	N/S	N/S
Delta Junction	19	11	13	-32%	18%
Dillingham	23	13	12	-48%	-8%
Emmonak	2	3	0	N/S	N/S
Fairbanks	912	842	764	-16%	-9%
Fort Yukon	5	2	2	N/S	N/S
Galena	0	3	2	N/S	N/S
Glennallen	6	10	7	N/S	N/S
Haines	11	5	13	18%	N/S
Homer	68	84	72	6%	-14%
Hoonah	1	4	1	N/S	N/S
Hooper Bay	1	0	0	N/S	N/S
Juneau	253	216	186	-26%	-14%
Kake ¹	2	Served by Petersburg		N/S	N/S
Kenai	261	219	315	21%	44%
Ketchikan	159	139	109	-31%	-22%
Kodiak	75	60	55	-27%	-8%
Kotzebue	32	22	22	-31%	0%
Naknek	8	12	5	N/S	N/S
Nenana	7	20	15	N/S	-25%
Nome	33	25	27	-18%	8%
Palmer	842	774	550	-35%	-29%
Petersburg	8	19	19	N/S	0%
Prince of Wales	18	12	12	-33%	0%
Sand Point	2	3	2	N/S	N/S
Seward	36	32	15	-58%	-53%
Sitka	71	61	55	-23%	-10%
Skagway	5	5	1	N/S	N/S
St. Mary's ²	0	0	0	N/S	N/S
St. Paul	0	2	0	N/S	N/S
Tok	6	13	6	N/S	N/S
Unalakleet	3	0	0	N/S	N/S
Unalaska	12	17	17	42%	0%
Utqiagvik	26	29	23	-12%	-21%
Valdez	7	11	16	N/S	45%
Wrangell	22	8	10	N/S	N/S
Yakutat	2	1	1	N/S	N/S
Total	7,432	6,824	5,750	-23%	-16%
1st District	554	471	407	-27%	-14%
2nd District	94	76	72	-23%	-5%
3rd District	5,773	5,328	4,417	-23%	-17%
4th District	1,011	949	854	-16%	-10%

N/S: Numbers 10 or less are not compared statistically.

1. Kake court closed in October 2018.

2. St. Mary's court closed in 2016. Records for filings from the venue are still maintained separately.

**Table 5.23. District Court General Civil Case Dispositions
by Manner of Disposition
FY 21**

Court	Stage of disposition						Total
	Dismiss/ settle	Default judgment	Summary judgment	Court trial	Jury trial	Other	
Anchorage	2,087	983	192	7	3	71	3,343
Angoon	0	0	0	0	0	0	0
Aniak	1	0	0	0	0	0	1
Bethel	34	12	5	0	0	0	51
Cordova	3	3	2	0	0	0	8
Delta Junction	9	2	1	0	0	1	13
Dillingham	7	0	4	0	1	0	12
Emmonak	0	0	0	0	0	0	0
Fairbanks	557	133	50	4	1	19	764
Fort Yukon	1	0	0	0	0	1	2
Galena	2	0	0	0	0	0	2
Glennallen	3	4	0	0	0	0	7
Haines	8	2	1	0	2	0	13
Homer	33	19	16	0	2	2	72
Hoonah	0	1	0	0	0	0	1
Hooper Bay	0	0	0	0	0	0	0
Juneau	99	52	30	0	1	4	186
Kake ¹				Served by Petersburg			
Kenai	213	51	39	1	0	11	315
Ketchikan	81	13	9	2	0	4	109
Kodiak	37	8	4	0	6	0	55
Kotzebue	13	5	1	1	1	1	22
Naknek	3	1	1	0	0	0	5
Nenana	6	3	4	0	0	2	15
Nome	16	6	3	0	1	1	27
Palmer	286	177	65	2	1	19	550
Petersburg	11	6	2	0	0	0	19
Prince of Wales	6	1	5	0	0	0	12
Sand Point	0	1	1	0	0	0	2
Seward	8	2	5	0	0	0	15
Sitka	30	14	9	0	1	1	55
Skagway	0	0	0	0	0	1	1
St. Mary's ²	0	0	0	0	0	0	0
St. Paul	0	0	0	0	0	0	0
Tok	4	1	1	0	0	0	6
Unalakleet	0	0	0	0	0	0	0
Unalaska	15	0	2	0	0	0	17
Utqiagvik	18	4	0	0	0	1	23
Valdez	8	3	3	0	0	2	16
Wrangell	4	1	5	0	0	0	10
Yakutat	1	0	0	0	0	0	1
Total	3,604	1,508	460	17	20	141	5,750
% of total	62.7	26.2	8.0	0.3	0.3	2.5	100.0
1st District	240	90	61	2	4	10	407
2nd District	47	15	4	1	2	3	72
3rd District	2,703	1,252	334	10	13	105	4,417
4th District	614	151	61	4	1	23	854

Note: Due to the covid pandemic, jury trials were suspended for various periods at various locations throughout FY21.

1. Kake court closed in October 2018.

2. St. Mary's court closed in 2016. Records for filings from the venue are still maintained separately.

**Table 5.24. Minor Offense Case Dispositions
FY 19 – FY 21**

Court	FY 19	FY 20	FY 21	Change	
				FY 19 to FY 21	FY 20 to FY 21
Anchorage¹	13,070	26,319	15,526	19%	-41%
Angoon	6	5	0	N/S	N/S
Aniak	24	25	11	-54%	-56%
Bethel	247	194	144	-42%	-26%
Cordova	103	74	77	-25%	4%
Delta Junction	531	254	226	-57%	-11%
Dillingham	385	236	238	-38%	1%
Emmonak	15	17	6	N/S	N/S
Fairbanks	6,324	5,637	5,674	-10%	1%
Fort Yukon	4	3	12	N/S	N/S
Galena	17	9	9	N/S	N/S
Glennallen	364	319	268	-26%	-16%
Haines	126	138	63	-50%	-54%
Homer	1,301	1,015	779	-40%	-23%
Hoonah	38	22	24	-37%	9%
Hooper Bay	14	12	2	N/S	N/S
Juneau	3,164	1,939	1,851	-41%	-5%
Kake ²	4	Served by Petersburg		N/S	N/S
Kenai	4,610	5,326	5,070	10%	-5%
Ketchikan	641	574	462	-28%	-20%
Kodiak	634	791	500	-21%	-37%
Kotzebue	35	76	54	54%	-29%
Naknek	153	83	69	-55%	-17%
Nenana	2,650	2,828	2,256	-15%	-20%
Nome	388	265	540	39%	104%
Palmer	8,980	7,965	8,737	-3%	10%
Petersburg	80	111	113	41%	2%
Prince of Wales	428	270	362	-15%	34%
Sand Point	16	29	6	N/S	N/S
Seward	1,635	1,511	1,269	-22%	-16%
Sitka	372	365	330	-11%	-10%
Skagway	9	3	3	N/S	N/S
St. Mary's ³	6	6	1	N/S	N/S
St. Paul	5	0	0	N/S	N/S
Tok	526	214	442	-16%	107%
Unalakleet	41	18	27	-34%	50%
Unalaska	402	214	115	-71%	-46%
Utqiagvik	143	71	80	-44%	13%
Valdez	177	200	116	-34%	-42%
Wrangell	86	35	55	-36%	57%
Yakutat	32	50	16	-50%	-68%
Total	47,786	57,223	45,533	-5%	-20%
1st District	4,986	3,512	3,279	-34%	-7%
2nd District	607	430	701	15%	63%
3rd District	31,835	44,082	32,770	3%	-26%
4th District	10,358	9,199	8,783	-15%	-5%

N/S: Numbers 10 or less are not compared statistically.

1. From January 1, 2019 – June 30, 2019 (FY19), the Anchorage Police Department did not file unpaid citations with the court system for entry of default judgment. The FY20 figures include filings for the eighteen-month period from January 1, 2019 – June 30, 2020. From April 30, 2021 – June 30 2021, electronic reporting of minor offense citations was suspended. The delayed citations will be counted in the FY22 numbers.

2. Kake court closed in October 2018.

3. St. Mary's court closed in 2016. Records for filings from the venue are still maintained separately.

**Table 5.25. Minor Offense¹ Case Dispositions by Case Type
FY 21**

Court	Equipment	Speeding	Improper driver behavior	Maneuvers	Alcohol/ drugs	Fish & Game	Other	Total
Anchorage	1,234	3,621	6,662	2,780	205	71	953	15,526
Angoon	0	0	0	0	0	0	0	0
Aniak	0	0	0	0	0	11	0	11
Bethel	5	2	34	6	0	34	63	144
Cordova	0	2	8	1	2	55	9	77
Delta Junction	9	90	83	5	0	28	11	226
Dillingham	13	0	50	6	0	18	151	238
Emmonak	0	2	1	0	0	3	0	6
Fairbanks	734	2,079	1,857	561	42	121	280	5,674
Fort Yukon	0	0	0	0	0	2	10	12
Galena	1	2	1	1	0	0	4	9
Glennallen	21	104	70	14	4	42	13	268
Haines	2	11	25	3	0	7	15	63
Homer	19	325	263	22	3	103	44	779
Hoonah	0	0	10	0	0	9	5	24
Hooper Bay	0	0	0	0	0	0	2	2
Juneau	45	384	790	145	2	110	375	1,851
Kake ²	Served by Petersburg							
Kenai	405	2,399	1,202	188	11	638	227	5,070
Ketchikan	44	13	213	19	0	53	120	462
Kodiak	21	39	148	45	5	110	132	500
Kotzebue	2	0	10	4	0	21	17	54
Naknek	7	8	22	2	1	19	10	69
Nenana	93	1,759	294	63	5	27	15	2,256
Nome	14	7	157	28	3	12	319	540
Palmer	937	3,664	2,700	530	20	191	695	8,737
Petersburg	7	1	26	10	0	55	14	113
Prince of Wales	6	68	115	10	3	116	44	362
Sand Point	0	1	0	1	0	3	1	6
Seward	137	643	287	36	1	94	71	1,269
Sitka	6	7	83	4	6	134	90	330
Skagway	0	0	0	1	0	1	1	3
St. Mary's ³	0	0	0	0	0	0	1	1
St. Paul	0	0	0	0	0	0	0	0
Tok	68	157	142	27	1	24	23	442
Unalakleet	7	3	0	0	0	1	16	27
Unalaska	49	10	37	3	1	4	11	115
Utqiagvik	4	4	9	5	1	15	42	80
Valdez	2	15	29	20	0	11	39	116
Wrangell	3	5	16	2	0	21	8	55
Yakutat	0	0	2	0	0	14	0	16
Total	3,895	15,425	15,346	4,542	316	2,178	3,831	45,533
% of total	8.5	33.9	33.7	10.0	0.7	4.8	8.4	100.0
1st District	113	489	1,280	194	11	520	672	3,279
2nd District	27	14	176	37	4	49	394	701
3rd District	2,845	10,831	11,478	3,648	253	1,359	2,356	32,770
4th District	910	4,091	2,412	663	48	250	409	8,783

1. From April 30, 2021 – June 30 2021, electronic reporting of minor offense citations was suspended. The delayed citations will be counted in the FY22 numbers.

2. Kake court closed in October 2018.

3. St. Mary's court closed in 2016. Records for filings from the venue are still maintained separately.

**Table 5.26. Minor Offense Case Types
FY 21**

Equipment Equipment / Vehicles - Registrations, Defects and Misuse	Alcohol and Drug Controlled Substance Violations
Speeding	Fish and Game
Improper Driver Behavior Duties Failed — Requirements Not Met	Other Offenses Tickets with zero points added to record
Maneuvers — Illegal or Improper Failure to Obey Following Improperly Improper Lane or Location Passing Reckless, Careless or Negligent Driving Failure to Yield Failure to Signal Improper Turns Wrong Way or Side Miscellaneous Maneuvers	Littering Duty Failure Curfew Dog Tickets Tobacco Boat Safety

In FY07 the Alaska Court System changed the way it categorizes minor offenses for annual reporting. The traffic categories now conform to the American Association of Motor Vehicle Administrators (AAMVA) Code Dictionary. This change is intended to make Alaska statistics easier to compile, understand, and compare to those of other jurisdictions.



Tor near Serpentine Tors Hot Springs, Bering Land Bridge National Preserve (Second Judicial District)

Cover photograph: Cottongrass, Arctic National Wildlife Refuge, 2 Sep 2006. Photo by Hillebrand, U.S. Fish and Wildlife Service (usfws_alaska on Flickr). (Public domain.)

Photos used with permission

The following photos are used without charge, including photos chosen from Creative Commons-licensed photos at Flickr (www.flickr.com). Creative Commons licensing information can be found at <http://creativecommons.org/licenses/>

Photo by Bering Land Bridge National Preserve, National Park Service (alaskanps on Flickr): page 86, Tor near Serpentine Tors Hot Springs, Bering Land Bridge National Preserve, 8 Jul 2009. (Public domain.)

Photo by Denali National Park and Preserve, National Park Service (alaskanps on Flickr): page ii, Dall sheep ewe and lambs, Denali National Park and Preserve, 22 May 2008. (Public domain.)

Photo by Photo by Barbara Eckstein (beckstei on Flickr): page 17, Alaska Range, Denali National Park and Preserve, 20 Jun 2012. (Used in accordance with Creative Commons Attribution-NonCommercial-NoDerivs 2.0 Generic (CC BY-NC-ND 2.0) license.)

Photos by Melissa S. Green: page 6, Fog on the Lowe River, Valdez, 7 Jun 2021; page 56, Nesting swan, Valdez, 7 Jun 2021. (Used by permission.)

Photo by Ryan Kingsbery, U.S. Geological Survey (usgs on Flickr): page 87, Female walrus, Chukchi Sea near Point Lay, 9 May 2014. (Public domain.)

Photos by Mandy Lindeberg, ShoreZone.org (shorezone on Flickr): page vi, Beaufort Sea coastline, 6 Aug 2012; page 16, Chukchi Sea coastline, 16 Aug 2012. (Used in accordance with Creative Commons Attribution 2.0 Generic (CC BY 2.0) license.)

Photos by Neil Nesheim: page 4, Tufted puffins, Glacier Bay, 10 Jul 2021; page 5, Blue heron, Douglas Island, 27 Aug 2021; page 18, Sunset, Douglas Island, 22 Aug 2020; page 23, King crab, Douglas Island, 9 Jan 2021; page 24, Wooden skiff, Petersburg, 7 Aug 2019; page 55, Sea anemones, Petersburg, 8 Aug 2019. (Used by permission.)

Photo by Bill Raften, U.S. Fish and Wildlife Service (usfwshq on Flickr): page v, Kanuti River, Kanuti National Wildlife Refuge, 10 Sep 2005. (Used in accordance with Creative Commons Attribution 2.0 Generic (CC BY 2.0) license.)

Photo by Kristine Sowl, U.S. Fish and Wildlife Service (usfws_alaska on Flickr): page 1, Diapensia, Andreafsky Wilderness, Yukon Delta National Wildlife Refuge, 14 Jun 2011. (Used in accordance with Creative Commons Attribution-NonCommercial-NoDerivs 2.0 Generic (CC BY-NC-ND 2.0) license.)



Female walrus, Chukchi Sea near Point Lay (Second Judicial District)

Cover photograph: Cottongrass, Arctic National Wildlife Refuge, 2 Sep 2006. Photo by Hillebrand, U.S. Fish and Wildlife Service (usfws_alaska on Flickr). (Public domain.)

Photos used with permission

The following photos are used without charge, including photos chosen from Creative Commons-licensed photos at Flickr (www.flickr.com). Creative Commons licensing information can be found at <http://creativecommons.org/licenses/>

Photo by Bering Land Bridge National Preserve, National Park Service (*alaskanps on Flickr*): page 86, Tor near Serpentine Tors Hot Springs, Bering Land Bridge National Preserve, 8 Jul 2009. (Public domain.)

Photo by Denali National Park and Preserve, National Park Service (*alaskanps on Flickr*): page ii, Dall sheep ewe and lambs, Denali National Park and Preserve, 22 May 2008. (Public domain.)

Photo by Photo by Barbara Eckstein (*beckstei on Flickr*): page 17, Alaska Range, Denali National Park and Preserve, 20 Jun 2012. (Used in accordance with Creative Commons Attribution-NonCommercial-NoDerivs 2.0 Generic (CC BY-NC-ND 2.0) license.)

Photos by Melissa S. Green: page 6, Fog on the Lowe River, Valdez, 7 Jun 2021; page 56, Nesting swan, Valdez, 7 Jun 2021. (Used by permission.)

Photo by Ryan Kingsbery, U.S. Geological Survey (*usgs on Flickr*): page 87, Female walrus, Chukchi Sea near Point Lay, 9 May 2014. (Public domain.)

Photos by Mandy Lindeberg, ShoreZone.org (*shorezone on Flickr*): page vi, Beaufort Sea coastline, 6 Aug 2012; page 16, Chukchi Sea coastline, 16 Aug 2012. (Used in accordance with Creative Commons Attribution 2.0 Generic (CC BY 2.0) license.)

Photos by Neil Nesheim: page 4, Tufted puffins, Glacier Bay, 10 Jul 2021; page 5, Blue heron, Douglas Island, 27 Aug 2021; page 18, Sunset, Douglas Island, 22 Aug 2020; page 23, King crab, Douglas Island, 9 Jan 2021; page 24, Wooden skiff, Petersburg, 7 Aug 2019; page 55, Sea anemones, Petersburg, 8 Aug 2019. (Used by permission.)

Photo by Bill Raften, U.S. Fish and Wildlife Service (*usfws_hq on Flickr*): page v, Kanuti River, Kanuti National Wildlife Refuge, 10 Sep 2005. (Used in accordance with Creative Commons Attribution 2.0 Generic (CC BY 2.0) license.)

Photo by Kristine Sowl, U.S. Fish and Wildlife Service (*usfws_alaska on Flickr*): page 1, Diapensia, Andreafsky Wilderness, Yukon Delta National Wildlife Refuge, 14 Jun 2011. (Used in accordance with Creative Commons Attribution-NonCommercial-NoDerivs 2.0 Generic (CC BY-NC-ND 2.0) license.)



Female walrus, Chukchi Sea near Point Lay (Second Judicial District)



Office of the Administrative Director
Alaska Court System
303 K Street
Anchorage, Alaska 99501
(907) 264-0548